



Product datasheet

Anti-Angiotensin Converting Enzyme 2 antibody ab15350

2 图像

概述

产品名称	Anti-Angiotensin Converting Enzyme 2抗体
描述	兔多克隆抗体to Angiotensin Converting Enzyme 2
宿主	Rabbit
经测试应用	适用于: IHC-P, ICC/IF, WB
种属反应性	与反应: Human
免疫原	Synthetic peptide: CQSTIEEQAKTFLDK , corresponding to N terminal amino acids 2-18 of Human ACE2. (Peptide available as ab15353 .)
	 Run BLAST with  Run BLAST with
阳性对照	Human kidney or human testis cell lysate
常规说明	Doesn't cross react with ACE1

性能

形式	Liquid
存放说明	Shipped at 4°C. Store at +4°C.
存储溶液	PBS with 0.02% sodium azide
纯度	Immunogen affinity purified
Primary antibody说明	Doesn't cross react with ACE1
克隆	多克隆
同种型	IgG

应用

Our [Abpromise guarantee](#) covers the use of **ab15350** in the following tested applications.

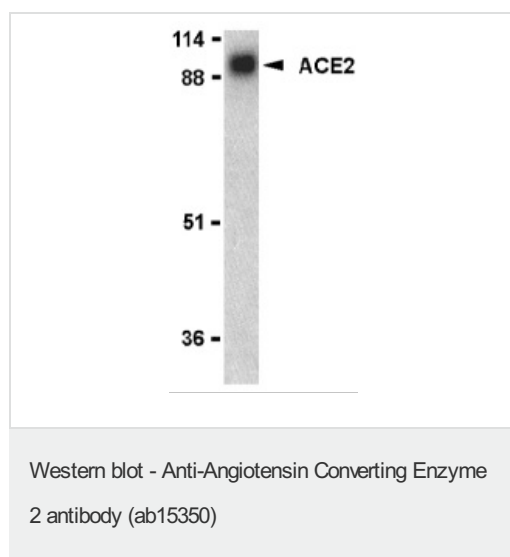
The application notes include recommended starting dilutions; optimal dilutions/concentrations should be determined by the end user.

应用	Ab 评论	说明
IHC-P		Use a concentration of 2 µg/ml.
ICC/IF		Use a concentration of 20 µg/ml.
WB		Use a concentration of 0.5 - 2 µg/ml. Detects a band of approximately 90 kDa (predicted molecular weight: 97 kDa). Can be blocked with Human Angiotensin Converting Enzyme 2 peptide (ab15353) .

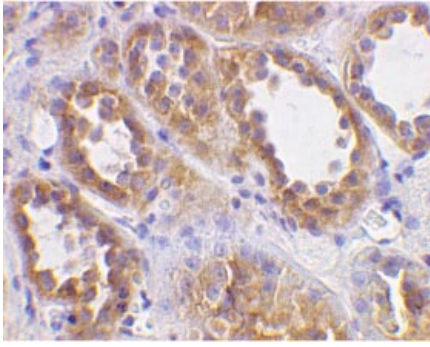
靶标

功能	Carboxypeptidase which converts angiotensin I to angiotensin 1-9, a peptide of unknown function, and angiotensin II to angiotensin 1-7, a vasodilator. Also able to hydrolyze apelin-13 and dynorphin-13 with high efficiency. May be an important regulator of heart function. In case of human coronaviruses SARS and HCoV-NL63 infections, serve as functional receptor for the spike glycoprotein of both coronaviruses.
组织特异性	Expressed in endothelial cells from small and large arteries, and in arterial smooth muscle cells. Expressed in lung alveolar epithelial cells, enterocytes of the small intestine, Leydig cells and Sertoli cells (at protein level). Expressed in heart, kidney, testis, and gastrointestinal system.
序列相似性	Belongs to the peptidase M2 family.
翻译后修饰	N-glycosylation on Asn-90 may limit SARS infectivity.
细胞定位	Secreted and Cell membrane.

图片



Western blot analysis of ACE2 in human kidney lysate with ab15350 at 1 µg/ml.



ab15350 at 2 μ g/ml staining Angiotensin
Converting Enzyme 2 in human kidney cells by
IHC

Immunohistochemistry (Formalin/PFA-fixed paraffin-
embedded sections) - Angiotensin Converting
Enzyme 2 antibody (ab15350)

Please note: All products are "FOR RESEARCH USE ONLY AND ARE NOT INTENDED FOR DIAGNOSTIC OR THERAPEUTIC USE"

Our Abpromise to you: Quality guaranteed and expert technical support

- Replacement or refund for products not performing as stated on the datasheet
- Valid for 12 months from date of delivery
- Response to your inquiry within 24 hours
- We provide support in Chinese, English, French, German, Japanese and Spanish
- Extensive multi-media technical resources to help you
- We investigate all quality concerns to ensure our products perform to the highest standards

If the product does not perform as described on this datasheet, we will offer a refund or replacement. For full details of the Abpromise, please visit <http://www.abcam.cn/abpromise> or contact our technical team.

Terms and conditions

- Guarantee only valid for products bought direct from Abcam or one of our authorized distributors