

Product datasheet

Anti-Fyn antibody ab13955

2 References 2 图像

概述

产品名称	Anti-Fyn抗体
描述	兔多克隆抗体to Fyn
经测试应用	适用于: WB, IHC-P, ICC/IF
种属反应性	与反应: Rat, Human 预测可用于: Mouse 
免疫原	Recombinant protein expressed in E. coli (Human).

性能

形式	Liquid
存放说明	Shipped at 4°C. Store at +4°C short term (1-2 weeks). Upon delivery aliquot. Store at -20°C or -80°C. Avoid freeze / thaw cycle.
存储溶液	Preservative: 0.02% Sodium Azide Constituents: 50% Glycerol, PBS
纯度	Protein A purified
纯化说明	This antibody is affinity purified.
克隆	多克隆
同种型	IgG

应用

Our [Abpromise guarantee](#) covers the use of **ab13955** in the following tested applications.

The application notes include recommended starting dilutions; optimal dilutions/concentrations should be determined by the end user.

应用	Ab评论	说明
WB		
IHC-P		
ICC/IF		

应用说明

ICC/IF: Use at a concentration of 1 µg/ml.

IHC-P: Use at an assay dependent dilution.

WB: 1/1000. Predicted molecular weight: 60 kDa. This antibody has been tested against the recombinant fragment used as immunogen. We have no data regarding the detection of endogenous protein.

Not yet tested in other applications.

Optimal dilutions/concentrations should be determined by the end user.

靶标

功能

Tyrosine-protein kinase implicated in the control of cell growth. Plays a role in the regulation of intracellular calcium levels, with isoform 2 showing the greater ability to mobilize cytoplasmic calcium in comparison to isoform 1. Required in brain development and mature brain function with important roles in the regulation of axon growth, axon guidance, and neurite extension. Blocks axon outgrowth and attraction induced by NTN1 by phosphorylating its receptor DDC. Phosphorylates RUNX3.

组织特异性

Isoform 1 is highly expressed in the brain. Isoform 2 is expressed in cells of hemopoietic lineages, especially T lymphocytes.

序列相似性

Belongs to the protein kinase superfamily. Tyr protein kinase family. SRC subfamily.

Contains 1 protein kinase domain.

Contains 1 SH2 domain.

Contains 1 SH3 domain.

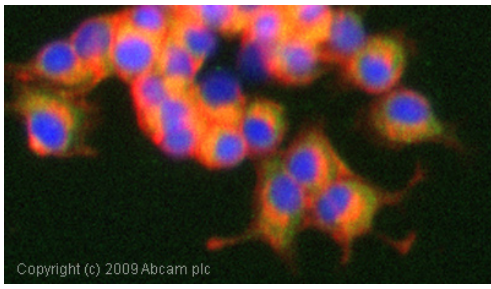
细胞定位

Cell membrane. Present and active in lipid rafts. Present in cell body and along the process of mature and developing oligodendrocytes.

形式

This protein is known to be similar in amino acid sequence to HCK (P08631), LCK (P06239), YES1 (P07947), SRC (P12931), and LYN (P07948). Therefore, cross-reactivity with these homologous proteins may be observed. We would be happy to provide immunogen alignment information upon request.

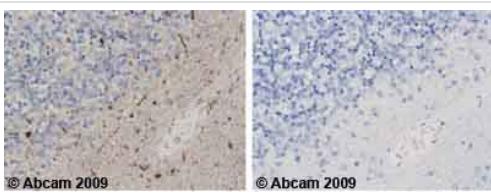
图片



Copyright (c) 2009 Abcam plc

Immunocytochemistry/ Immunofluorescence-Fyn antibody(ab13955)

ICC/IF image of ab13955 stained PC12 cells. The cells were 100% methanol fixed (5 min) and then incubated in 1%BSA / 10% normal goat serum / 0.3M glycine in 0.1% PBS-Tween for 1h to permeabilise the cells and block non-specific protein-protein interactions. The cells were then incubated with the antibody (ab13955, 1µg/ml) overnight at +4°C. The secondary antibody (green) was Alexa Fluor® 488 goat anti-rabbit IgG (H+L) used at a 1/1000 dilution for 1h. Alexa Fluor® 594 WGA was used to label plasma membranes (red) at a 1/200 dilution for 1h. DAPI was used to stain the cell nuclei (blue) at a concentration of 1.43µM.



© Abcam 2009

© Abcam 2009

Immunohistochemistry (Formalin/PFA-fixed paraffin-embedded sections)-Fyn antibody(ab13955)

Ab13955 staining human normal cerebellum tissue. Staining is localized to cytoplasm. Left panel: with primary antibody at 2 µg/ml. Right panel: isotype control.

Sections were stained using an automated system DAKO Autostainer Plus , at room temperature. Sections were rehydrated and antigen retrieved with the Dako 3-in-1 AR buffer EDTA pH 9.0 in a DAKO PT Link. Slides were peroxidase blocked in 3% H₂O₂ in methanol for 10 minutes. They were then blocked with Dako Protein block for 10 minutes (containing casein 0.25% in PBS) then incubated with primary antibody for 20 minutes and detected with Dako Envision Flex amplification kit for 30 minutes. Colorimetric detection was completed with Diaminobenzidine for 5 minutes. Slides were counterstained with Haematoxylin and coverslipped under DePeX. Please note that for manual staining we recommend to optimize the primary antibody concentration and incubation time (overnight incubation), and amplification may be required.

Our Abpromise to you: Quality guaranteed and expert technical support

- Replacement or refund for products not performing as stated on the datasheet
- Valid for 12 months from date of delivery
- Response to your inquiry within 24 hours

- We provide support in Chinese, English, French, German, Japanese and Spanish
- Extensive multi-media technical resources to help you
- We investigate all quality concerns to ensure our products perform to the highest standards

If the product does not perform as described on this datasheet, we will offer a refund or replacement. For full details of the Abpromise, please visit <http://www.abcam.cn/abpromise> or contact our technical team.

Terms and conditions

- Guarantee only valid for products bought direct from Abcam or one of our authorized distributors