

## Product datasheet

# Anti-SLC9A3R2 antibody ab125336

### 1 图像

#### 概述

产品名称	Anti-SLC9A3R2抗体
描述	兔多克隆抗体to SLC9A3R2
宿主	Rabbit
经测试应用	适用于: WB
种属反应性	与反应: Mouse 预测可用于: Rat, Rabbit, Guinea pig, Cow, Cat, Dog, Human
免疫原	Synthetic peptide corresponding to a region within internal sequence amino acids 235-284 (HFKRLRVIPT EEHVEGPLPS PVTNGTSPAQ LNGGSVCSSR SDLPGSEKDN) of Mouse SLC9A3R2 (NP_075938). <a href="#">Run BLAST with ExPASy</a> <a href="#">Run BLAST with NCBI</a>
阳性对照	Mouse liver lysate.

#### 性能

形式	Liquid
存放说明	Shipped at 4°C. Upon delivery aliquot and store at -20°C. Avoid repeated freeze / thaw cycles.
存储溶液	Constituents: 97% PBS, 2% Sucrose
纯度	Immunogen affinity purified
克隆	多克隆
同种型	IgG

#### 应用

Our [Abpromise guarantee](#) covers the use of **ab125336** in the following tested applications.

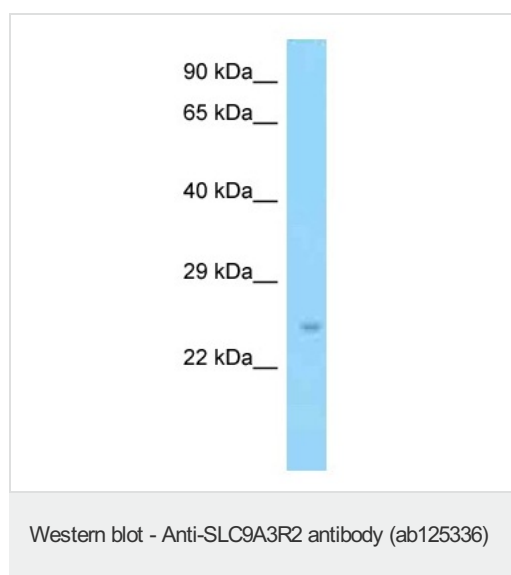
The application notes include recommended starting dilutions; optimal dilutions/concentrations should be determined by the end user.

应用	Ab评论	说明
WB		Use a concentration of 1 µg/ml. Predicted molecular weight: 37 kDa. Good results were obtained when blocked with 5% non-fat dry milk in 0.05% PBS-T.

## 靶标

<b>功能</b>	Scaffold protein that connects plasma membrane proteins with members of the ezrin/moesin/radixin family and thereby helps to link them to the actin cytoskeleton and to regulate their surface expression. Necessary for cAMP-mediated phosphorylation and inhibition of SLC9A3. May also act as scaffold protein in the nucleus.
<b>组织特异性</b>	Widely expressed.
<b>序列相似性</b>	Contains 2 PDZ (DHR) domains.
<b>细胞定位</b>	Endomembrane system. Nucleus. Apical cell membrane. Localizes with EZR and PODXL at the apical cell membrane of glomerular epithelium cells and the sides of the food processes (By similarity). Nuclear, in a punctate pattern.

## 图片



Anti-SLC9A3R2 antibody (ab125336) at 1  $\mu\text{g/ml}$  + Mouse liver lysate at 10  $\mu\text{g}$

**Predicted band size:** 37 kDa

Gel concentration: 12%  
ab125336 appears to be recognizing isoform 2 (25kDa).

**Please note:** All products are "FOR RESEARCH USE ONLY AND ARE NOT INTENDED FOR DIAGNOSTIC OR THERAPEUTIC USE"

## Our Abpromise to you: Quality guaranteed and expert technical support

- Replacement or refund for products not performing as stated on the datasheet
- Valid for 12 months from date of delivery
- Response to your inquiry within 24 hours
- We provide support in Chinese, English, French, German, Japanese and Spanish
- Extensive multi-media technical resources to help you
- We investigate all quality concerns to ensure our products perform to the highest standards

If the product does not perform as described on this datasheet, we will offer a refund or replacement. For full details of the Abpromise, please visit <http://www.abcam.cn/abpromise> or contact our technical team.

## Terms and conditions

---

- Guarantee only valid for products bought direct from Abcam or one of our authorized distributors