

Product datasheet

Anti-Fibulin 2 antibody ab125256

1 图像

概述

产品名称	Anti-Fibulin 2抗体
描述	兔多克隆抗体to Fibulin 2
经测试应用	适用于: WB, IP, ELISA, IHC-P
种属反应性	与反应: Mouse, Rat, Human
免疫原	Synthetic peptide corresponding to the C-terminus of Human Fibulin 2.
阳性对照	Tissue lysate derived from mouse kidney.

性能

形式	Liquid
存放说明	Shipped at 4°C. Store at +4°C short term (1-2 weeks). Upon delivery aliquot. Store at -20°C or -80°C. Avoid freeze / thaw cycle.
存储溶液	pH: 7.20 Constituent: 99% PBS Note: stabilizer(0.05% PROCLIN300, 10MG/ML BSA)
纯度	Immunogen affinity purified
克隆	多克隆
同种型	IgG

应用

Our [Abpromise guarantee](#) covers the use of **ab125256** in the following tested applications.

The application notes include recommended starting dilutions; optimal dilutions/concentrations should be determined by the end user.

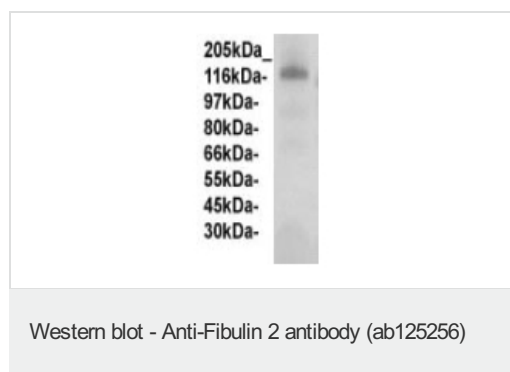
应用	Ab评论	说明
WB		Use a concentration of 0.1 - 1 µg/ml. Detects a band of approximately 135 kDa (predicted molecular weight: 127 kDa).
IP		Use a concentration of 2 - 5 µg/ml.

应用	Ab评论	说明
ELISA		Use a concentration of 0.01 - 0.1 µg/ml.
IHC-P		Use a concentration of 0.5 - 2 µg/ml.

## 靶标

功能	Its binding to fibronectin and some other ligands is calcium dependent.
组织特异性	Component of both basement membranes and other connective tissues. Expressed in heart, placenta and ovary.
序列相似性	Belongs to the fibulin family. Contains 3 anaphylatoxin-like domains. Contains 11 EGF-like domains.
发展阶段	Widely expressed during embryonic development. Primarily detected within the neuroepithelium, spinal ganglia and peripheral nerves.
细胞定位	Secreted > extracellular space > extracellular matrix.

## 图片



Anti-Fibulin 2 antibody (ab125256) at 1/500 dilution + mouse kidney tissue lysates

**Predicted band size** : 127 kDa

**Observed band size** : 135 kDa

**Please note:** All products are "FOR RESEARCH USE ONLY AND ARE NOT INTENDED FOR DIAGNOSTIC OR THERAPEUTIC USE"

## Our Abpromise to you: Quality guaranteed and expert technical support

- Replacement or refund for products not performing as stated on the datasheet
- Valid for 12 months from date of delivery
- Response to your inquiry within 24 hours
- We provide support in Chinese, English, French, German, Japanese and Spanish
- Extensive multi-media technical resources to help you
- We investigate all quality concerns to ensure our products perform to the highest standards

If the product does not perform as described on this datasheet, we will offer a refund or replacement. For full details of the Abpromise, please visit <http://www.abcam.cn/abpromise> or contact our technical team.

## Terms and conditions

---

- Guarantee only valid for products bought direct from Abcam or one of our authorized distributors