


Product datasheet

Anti-SF3B3 antibody ab124658

2 图像

概述

产品名称	Anti-SF3B3抗体
描述	兔多克隆抗体to SF3B3
宿主	Rabbit
经测试应用	适用于: IHC-P
种属反应性	与反应: Mouse, Human 预测可用于: Rat, Rabbit, Horse, Chicken, Guinea pig, Cow, Dog, Turkey, Chimpanzee, Zebrafish, Rhesus monkey, Gorilla, Orangutan, Xenopus tropicalis 
免疫原	Synthetic peptide corresponding to a region between residues 1167 and 1217 of Human SF3B3 (NP_036558.3).
阳性对照	Human breast carcinoma, colon carcinoma, non-small cell lung cancer, ovarian carcinoma, prostate carcinoma or stomach adenocarcinoma tissue. Mouse colon carcinoma CT26, hybridoma tumor, renal cell carcinoma or teratoma tissue.
常规说明	Shelf Life: 1 year from date of receipt

性能

形式	Liquid
存放说明	Shipped at 4°C. Upon delivery aliquot and store at -20°C. Avoid freeze / thaw cycles.
存储溶液	Preservative: 0.09% Sodium azide Constituents: 99% Tris buffered saline, 0.1% BSA
纯度	Immunogen affinity purified
纯化说明	Affinity purified using an epitope specific to SF3B3 immobilized on solid support.
克隆	多克隆
同种型	IgG

应用

Our [Abpromise guarantee](#) covers the use of **ab124658** in the following tested applications.

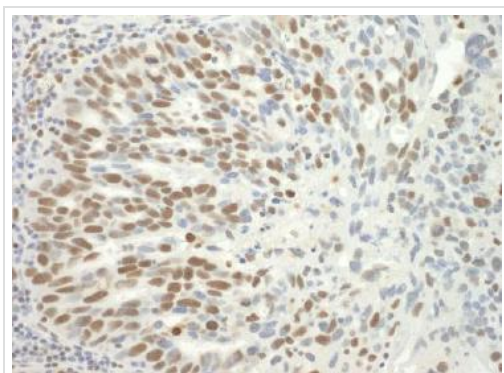
The application notes include recommended starting dilutions; optimal dilutions/concentrations should be determined by the end user.

应用	Ab评论	说明
IHC-P		1/100 - 1/500. Perform heat mediated antigen retrieval with citrate buffer pH 6 before commencing with IHC staining protocol.

靶标

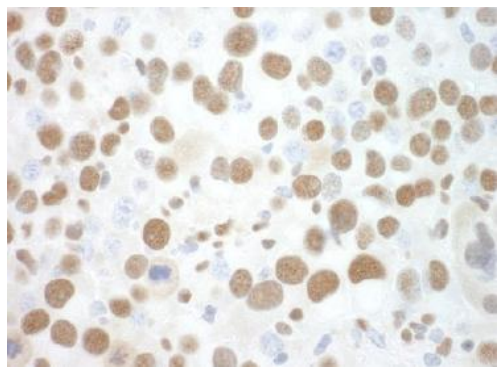
功能	Subunit of the splicing factor SF3B required for 'A' complex assembly formed by the stable binding of U2 snRNP to the branchpoint sequence (BPS) in pre-mRNA. Sequence independent binding of SF3A/SF3B complex upstream of the branch site is essential, it may anchor U2 snRNP to the pre-mRNA. May also be involved in the assembly of the 'E' complex. Belongs also to the minor U12-dependent spliceosome, which is involved in the splicing of rare class of nuclear pre-mRNA intron.
序列相似性	Belongs to the RSE1 family.
细胞定位	Nucleus.

图片



ab124658, at 1/500 dilution, staining SF3B3 in Formalin-fixed Paraffin-embedded Human ovarian carcinoma tissue, by Immunohistochemistry. Detection by DAB staining.

Immunohistochemistry (Formalin/PFA-fixed paraffin-embedded sections) - Anti-SF3B3 antibody (ab124658)



ab124658, at 1/100 dilution, staining SF3B3 in Formalin-fixed Paraffin-embedded Mouse renal cell carcinoma tissue, by Immunohistochemistry. Detection by DAB staining.

Immunohistochemistry (Formalin/PFA-fixed paraffin-embedded sections) - Anti-SF3B3 antibody (ab124658)

Please note: All products are "FOR RESEARCH USE ONLY AND ARE NOT INTENDED FOR DIAGNOSTIC OR THERAPEUTIC USE"

Our Abpromise to you: Quality guaranteed and expert technical support

- Replacement or refund for products not performing as stated on the datasheet
- Valid for 12 months from date of delivery
- Response to your inquiry within 24 hours
- We provide support in Chinese, English, French, German, Japanese and Spanish
- Extensive multi-media technical resources to help you
- We investigate all quality concerns to ensure our products perform to the highest standards

If the product does not perform as described on this datasheet, we will offer a refund or replacement. For full details of the Abpromise, please visit <http://www.abcam.cn/abpromise> or contact our technical team.

Terms and conditions

- Guarantee only valid for products bought direct from Abcam or one of our authorized distributors