

Product datasheet

Anti-E2F2 antibody ab123374

1 图像

概述

产品名称	Anti-E2F2抗体
描述	兔多克隆抗体to E2F2
宿主	Rabbit
经测试应用	适用于: WB
种属反应性	与反应: Mouse, Human
免疫原	Synthetic peptide: LFDSY , corresponding to a region around amino acids 425-429 of Human E2F2 (Q14209). Run BLAST with Run BLAST with
阳性对照	HeLa and K562 extracts

性能

形式	Liquid
存放说明	Shipped at 4°C. Store at -20°C. Stable for 12 months at -20°C.
存储溶液	pH: 7.40 Preservative: 0.02% Sodium azide Constituents: 49% PBS, 50% Glycerol, 0.88% Sodium chloride Note: (without Mg ²⁺ and Ca ²⁺)
纯度	Immunogen affinity purified
克隆	多克隆
同种型	IgG

应用

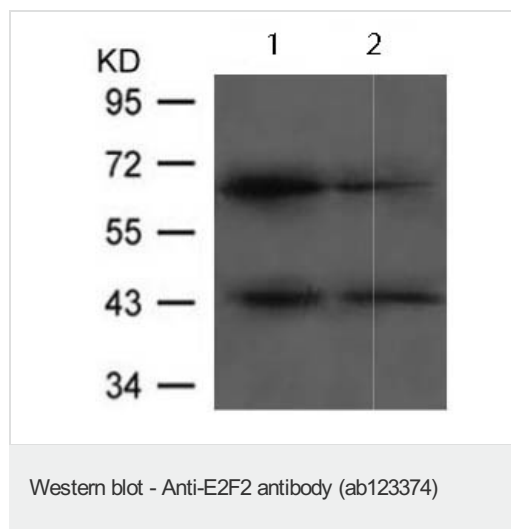
Our [Abpromise guarantee](#) covers the use of **ab123374** in the following tested applications.
The application notes include recommended starting dilutions; optimal dilutions/concentrations should be determined by the end user.

应用	Ab评论	说明
WB		1/500 - 1/1000. Detects a band of approximately 45 kDa (predicted molecular weight: 48 kDa).

靶标

功能	Transcription activator that binds DNA cooperatively with DP proteins through the E2 recognition site, 5'-TTTC[CG]CGC-3' found in the promoter region of a number of genes whose products are involved in cell cycle regulation or in DNA replication. The DRTF1/E2F complex functions in the control of cell-cycle progression from G1 to S phase. E2F-2 binds specifically to RB1 protein, in a cell-cycle dependent manner.
组织特异性	Highest level of expression is found in placenta, low levels are found in lung. Found as well in many immortalized cell lines derived from tumor samples.
序列相似性	Belongs to the E2F/DP family.
翻译后修饰	Phosphorylated by CDK2 and cyclin A-CDK2 in the S-phase.
细胞定位	Nucleus.

图片



All lanes : Anti-E2F2 antibody (ab123374) at 1/500 dilution

Lane 1 : HeLa extract

Lane 2 : K562 extract

Predicted band size: 48 kDa

Please note: All products are "FOR RESEARCH USE ONLY AND ARE NOT INTENDED FOR DIAGNOSTIC OR THERAPEUTIC USE"

Our Abpromise to you: Quality guaranteed and expert technical support

- Replacement or refund for products not performing as stated on the datasheet
- Valid for 12 months from date of delivery
- Response to your inquiry within 24 hours
- We provide support in Chinese, English, French, German, Japanese and Spanish
- Extensive multi-media technical resources to help you
- We investigate all quality concerns to ensure our products perform to the highest standards

If the product does not perform as described on this datasheet, we will offer a refund or replacement. For full details of the Abpromise, please visit <http://www.abcam.cn/abpromise> or contact our technical team.

Terms and conditions

- Guarantee only valid for products bought direct from Abcam or one of our authorized distributors