

Product datasheet

Anti-DORFIN antibody ab123343

1 图像

概述

产品名称	Anti-DORFIN抗体
描述	兔多克隆抗体to DORFIN
经测试应用	适用于: WB
种属反应性	与反应: Human
免疫原	Synthetic peptide conjugated to KLH, corresponding to a region within internal sequence amino acids 383-413 of Human DORFIN (NP_056250.3, NP_904355.1).
阳性对照	NCI-H460 cell line lysates.

性能

形式	Liquid
存放说明	Shipped at 4°C. Store at 4°C (up to 6 months). Store at -20°C long term.
存储溶液	Preservative: 0.09% Sodium azide Constituent: 99% PBS
纯度	Immunogen affinity purified
纯化说明	ab123343 is purified through a protein A column, followed by peptide affinity purification.
克隆	多克隆
同种型	IgG

应用

Our [Abpromise guarantee](#) covers the use of **ab123343** in the following tested applications.

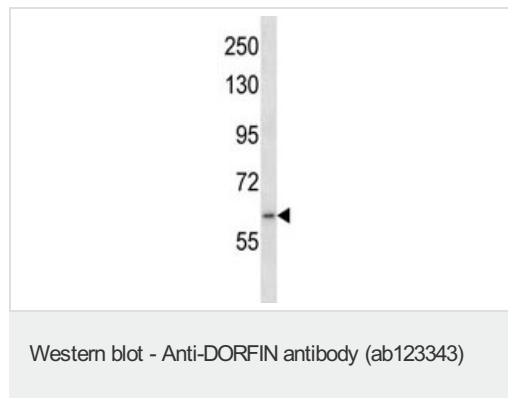
The application notes include recommended starting dilutions; optimal dilutions/concentrations should be determined by the end user.

应用	Ab评论	说明
WB		1/100 - 1/500. Predicted molecular weight: 65 kDa.

靶标

功能	E3 ubiquitin-protein ligase which accepts ubiquitin from E2 ubiquitin-conjugating enzymes UBE2L3 and UBE2L6 in the form of a thioester and then directly transfers the ubiquitin to targeted substrates, such as SNCAIP or CASR. Specifically ubiquitinates pathogenic SOD1 variants, which leads to their proteasomal degradation and to neuronal protection.
组织特异性	Widely expressed, with highest levels in heart. Ubiquitously expressed in the central nervous system.
通路	Protein modification; protein ubiquitination.
序列相似性	Belongs to the RBR family. RNF19 subfamily. Contains 1 IBR-type zinc finger. Contains 2 RING-type zinc fingers.
翻译后修饰	Phosphorylated upon DNA damage, probably by ATM or ATR.
细胞定位	Membrane. Cytoplasm > cytoskeleton > centrosome. Present in the hyaline inclusion bodies specifically found in motor neurons from amyotrophic lateral sclerosis patients. Present in the Lewy bodies specifically found in neurons from Parkinson disease patients.

图片



Anti-DORFIN antibody (ab123343) at 1/100 dilution + NCI-H460 cell line lysates at 35 µg

Predicted band size : 65 kDa

Please note: All products are "FOR RESEARCH USE ONLY AND ARE NOT INTENDED FOR DIAGNOSTIC OR THERAPEUTIC USE"

Our Abpromise to you: Quality guaranteed and expert technical support

- Replacement or refund for products not performing as stated on the datasheet
- Valid for 12 months from date of delivery
- Response to your inquiry within 24 hours
- We provide support in Chinese, English, French, German, Japanese and Spanish
- Extensive multi-media technical resources to help you
- We investigate all quality concerns to ensure our products perform to the highest standards

If the product does not perform as described on this datasheet, we will offer a refund or replacement. For full details of the Abpromise, please visit <http://www.abcam.cn/abpromise> or contact our technical team.

Terms and conditions

- Guarantee only valid for products bought direct from Abcam or one of our authorized distributors