

Product datasheet

Anti-Solo antibody ab123335

1 图像

概述

产品名称	Anti-Solo抗体
描述	兔多克隆抗体to Solo
宿主	Rabbit
经测试应用	适用于: WB
种属反应性	与反应: Human
免疫原	Synthetic peptide conjugated to KLH, corresponding to a region within N terminal amino acids 165-194 of Human Solo (NP_835224.3).
阳性对照	NCI-H292 cell line lysates.

性能

形式	Liquid
存放说明	Shipped at 4°C. Store at 4°C (up to 6 months). Store at -20°C long term.
存储溶液	Preservative: 0.09% Sodium azide Constituent: 99% PBS
纯度	Immunogen affinity purified
纯化说明	ab123335 is purified through a protein A column, followed by peptide affinity purification.
克隆	多克隆
同种型	IgG

应用

Our [Abpromise guarantee](#) covers the use of **ab123335** in the following tested applications.

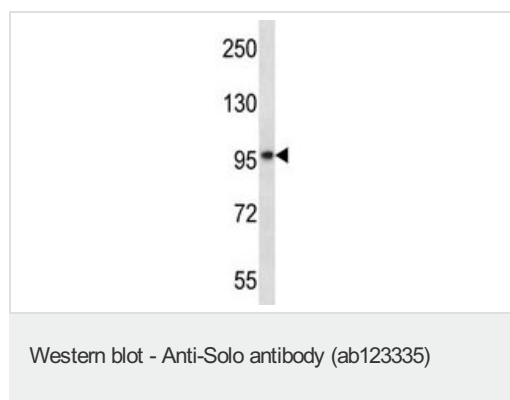
The application notes include recommended starting dilutions; optimal dilutions/concentrations should be determined by the end user.

应用	Ab评论	说明
WB		1/100 - 1/500. Predicted molecular weight: 79 kDa.

靶标

<b>功能</b>	May act as the primary docking protein directing membrane turnover and assembly of the transient receptor potential channels TRPC4 and TRPC5. Binds phospholipids such as phosphatidylinositol monophosphates, phosphatidylinositol diphosphates (PIP2s) and phosphatidic acid, but not less polar lipids including phosphatidylcholine, phosphatidylserine, and phosphatidylinositol. The binding to PIP2s is calcium dependent. Might be involved in the plasma membrane localization of CTNNB1.
<b>组织特异性</b>	Broad expression. High expression in thalamus and brain. Significantly expressed in vasculature.
<b>序列相似性</b>	Belongs to the SOLO family. Contains 1 CRAL-TRIO domain. Contains 3 spectrin repeats.

## 图片



Anti-Solo antibody (ab123335) at 1/100 dilution + NCI-H292 cell line lysates at 35 µg

**Predicted band size:** 79 kDa

**Please note:** All products are "FOR RESEARCH USE ONLY AND ARE NOT INTENDED FOR DIAGNOSTIC OR THERAPEUTIC USE"

## Our Abpromise to you: Quality guaranteed and expert technical support

- Replacement or refund for products not performing as stated on the datasheet
- Valid for 12 months from date of delivery
- Response to your inquiry within 24 hours
- We provide support in Chinese, English, French, German, Japanese and Spanish
- Extensive multi-media technical resources to help you
- We investigate all quality concerns to ensure our products perform to the highest standards

If the product does not perform as described on this datasheet, we will offer a refund or replacement. For full details of the Abpromise, please visit <http://www.abcam.cn/abpromise> or contact our technical team.

## Terms and conditions

- Guarantee only valid for products bought direct from Abcam or one of our authorized distributors