

Product datasheet

Anti-Protein phosphatase 1 inhibitor 3C antibody ab123016

1 图像

概述

产品名称	Anti-Protein phosphatase 1抑制剂3C抗体
描述	兔多克隆抗体to蛋白phosphatase 1抑制剂3C
宿主	Rabbit
经测试应用	适用于: WB
种属反应性	与反应: Human
免疫原	Synthetic peptide corresponding to a region within N terminal amino acids 34-83 (PPVKSFLGPYDEFQRRHFVN KLKPLKSCLN IKHKAKSQND WKCSHNQAKK) of Human Protein phosphatase 1 inhibitor 3C (NP_005389). Run BLAST with ExPASy Run BLAST with NCBI
阳性对照	293T cell lysate.

性能

形式	Liquid
存放说明	Shipped at 4°C. Upon delivery aliquot and store at -20°C. Avoid repeated freeze / thaw cycles.
存储溶液	Constituents: 97% PBS, 2% Sucrose
纯度	Immunogen affinity purified
克隆	多克隆
同种型	IgG

应用

Our [Abpromise guarantee](#) covers the use of **ab123016** in the following tested applications.

The application notes include recommended starting dilutions; optimal dilutions/concentrations should be determined by the end user.

应用	Ab评论	说明
WB		Use a concentration of 1 µg/ml. Predicted molecular weight: 36 kDa. Good results were obtained when blocked with 5% non-fat dry milk in 0.05% PBS-T.

靶标

功能

Acts as a glycogen-targeting subunit for PP1 and regulates its activity. Activates glycogen synthase, reduces glycogen phosphorylase activity and limits glycogen breakdown. Dramatically increases basal and insulin-stimulated glycogen synthesis upon overexpression in a variety of cell types.

序列相似性

Contains 1 CBM21 (carbohydrate binding type-21) domain.

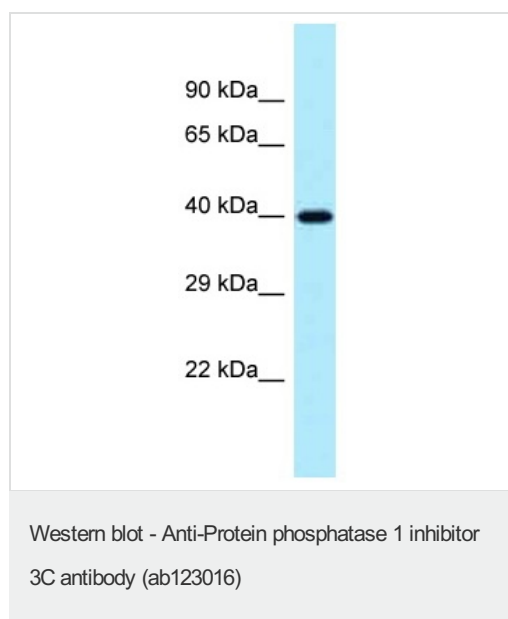
结构域

The N-terminal region is required for binding to PP1, the central region is required for binding to glycogen and the C-terminal region is required for binding to glycogen phosphorylase, glycogen synthase and phosphorylase kinase.

翻译后修饰

Ubiquitinated by NHLRC1/malin in a EPM2A/laforin-dependent manner.

图片



Anti-Protein phosphatase 1 inhibitor 3C antibody (ab123016) at 1 $\mu\text{g/ml}$ + 293T cell lysate at 10 μg

Secondary

anti-Rabbit IgG HRP

Predicted band size: 36 kDa

Gel concentration: 12%

Please note: All products are "FOR RESEARCH USE ONLY AND ARE NOT INTENDED FOR DIAGNOSTIC OR THERAPEUTIC USE"

Our Abpromise to you: Quality guaranteed and expert technical support

- Replacement or refund for products not performing as stated on the datasheet
- Valid for 12 months from date of delivery
- Response to your inquiry within 24 hours
- We provide support in Chinese, English, French, German, Japanese and Spanish
- Extensive multi-media technical resources to help you
- We investigate all quality concerns to ensure our products perform to the highest standards

If the product does not perform as described on this datasheet, we will offer a refund or replacement. For full details of the Abpromise, please visit <http://www.abcam.cn/abpromise> or contact our technical team.

Terms and conditions

- Guarantee only valid for products bought direct from Abcam or one of our authorized distributors