

Product datasheet

Anti-Sec24C antibody ab122635

★★★★★ 1 Abreviews 1 References 3 图像

概述

产品名称	Anti-Sec24C抗体
描述	兔多克隆抗体to Sec24C
宿主	Rabbit
经测试应用	适用于: IHC-P, ICC/IF, WB
种属反应性	与反应: Human
免疫原	antigen sequence: LTKSPVESTT EPPAVRASEE RLSNGDMLL ENGLNLFLLWV GASVQQGVVQ SLFSVSSFSQ ITSGLSVLPV LDNPLSKKVR, corresponding to C terminal amino acids 954-1033 of Human Sec24C. Run BLAST with ExPASy Run BLAST with NCBI
阳性对照	Human pancreas tissue; A431 cells; RT 4, U 251 MG, Human liver and tonsil lysates.

性能

形式	Liquid
存放说明	Shipped at 4°C. Store at -20°C or -80°C. Avoid freeze / thaw cycle. Store undiluted.
存储溶液	pH: 7.20 Preservative: 0.02% Sodium azide Constituents: 59% PBS, 40% Glycerol
纯度	Immunogen affinity purified
克隆	多克隆
同种型	IgG

应用

Our [Abpromise guarantee](#) covers the use of **ab122635** in the following tested applications.

The application notes include recommended starting dilutions; optimal dilutions/concentrations should be determined by the end user.

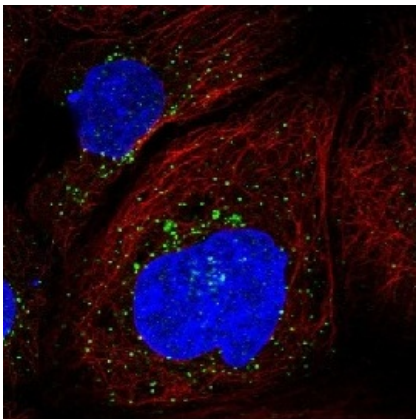
应用	Ab评论	说明
IHC-P		1/10 - 1/20. Perform heat mediated antigen retrieval with citrate buffer pH 6 before commencing with IHC staining protocol.

应用	Ab评论	说明
ICC/IF	★★★★★	Use a concentration of 1 - 4 µg/ml. using PFA/Triton X-100 Fixation/Permeabilization.
WB		1/250 - 1/500.

靶标

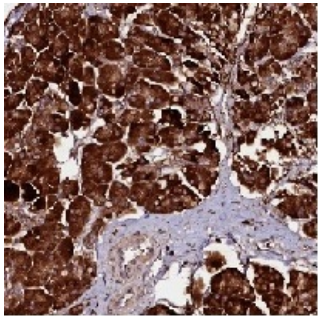
功能	Component of the COPII coat, that covers ER-derived vesicles involved in transport from the endoplasmic reticulum to the Golgi apparatus. COPII acts in the cytoplasm to promote the transport of secretory, plasma membrane, and vacuolar proteins from the endoplasmic reticulum to the Golgi complex.
组织特异性	Ubiquitous.
序列相似性	Belongs to the SEC23/SEC24 family. SEC24 subfamily.
细胞定位	Cytoplasm. Cytoplasm > perinuclear region. Endoplasmic reticulum membrane. Golgi apparatus membrane.

图片



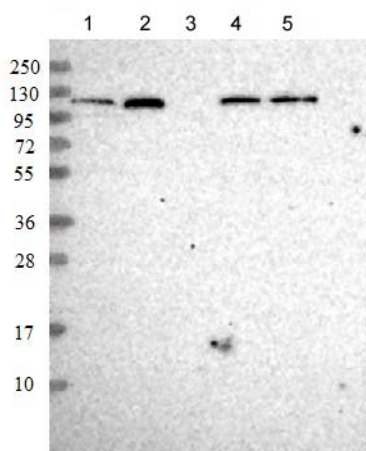
ab122635 at 4 µg/ml staining SEC24C in PFA/Triton X-100 fixed/permeabilized A431 cells by Immunofluorescence (green).

Immunocytochemistry/ Immunofluorescence - Anti-Sec24C antibody (ab122635)



ab122635 at 1/10 dilution staining Sec24C in paraffin-embedded human Pancreas tissue by Immunohistochemistry.

Immunohistochemistry (Formalin/PFA-fixed paraffin-embedded sections) - Anti-Sec24C antibody (ab122635)



All lanes : Anti-Sec24C antibody (ab122635) at 1/250 dilution

Lane 1 : RT 4 lysate

Lane 2 : U 251 MG lysate

Lane 3 : Human plasma lysate

Lane 4 : Human liver lysate

Lane 5 : Human tonsil lysate

Developed using the ECL technique.

Western blot - Anti-Sec24C antibody (ab122635)

Please note: All products are "FOR RESEARCH USE ONLY AND ARE NOT INTENDED FOR DIAGNOSTIC OR THERAPEUTIC USE"

Our Abpromise to you: Quality guaranteed and expert technical support

- Replacement or refund for products not performing as stated on the datasheet
- Valid for 12 months from date of delivery
- Response to your inquiry within 24 hours
- We provide support in Chinese, English, French, German, Japanese and Spanish
- Extensive multi-media technical resources to help you
- We investigate all quality concerns to ensure our products perform to the highest standards

If the product does not perform as described on this datasheet, we will offer a refund or replacement. For full details of the Abpromise, please visit <http://www.abcam.cn/abpromise> or contact our technical team.

Terms and conditions

- Guarantee only valid for products bought direct from Abcam or one of our authorized distributors