

Product datasheet

Anti-LCMT1 antibody [2C9] ab119320

9 图像

概述

产品名称	Anti-LCMT1抗体[2C9]
描述	小鼠单克隆抗体[2C9] to LCMT1
宿主	Mouse
经测试应用	适用于: WB, IHC-P
种属反应性	与反应: Mouse, Rat, Human, Monkey
免疫原	Recombinant full length Human LCMT1 (NP_057393) produced in HEK293T cell.
阳性对照	HEK293T cells transfected with pCMV6-ENTRY LCMT1 cDNA, HepG2, HeLa, SVT2, A549, COS7, Jurkat, MDCK, PC12 and MCF7 cell lysates, Human breast, ovary, endometrium, Adenocarcinoma of Human endometrium, bladder, lymphoma and tonsil tissues
常规说明	Dilute in PBS (pH7.3) before use. Concentration 0.5~1.0 mg/ml (Lot Dependent)

性能

形式	Liquid
存放说明	Shipped at 4°C. Upon delivery aliquot and store at -20°C. Avoid repeated freeze / thaw cycles.
存储溶液	pH: 7.30 Preservative: 0.02% Sodium azide Constituents: 48% PBS, 1% BSA, 50% Glycerol
纯度	IgG fraction
纯化说明	Purified from mouse ascites fluids by affinity chromatography
克隆	单克隆
克隆编号	2C9
同种型	IgG1

应用

Our [Abpromise guarantee](#) covers the use of **ab119320** in the following tested applications.

The application notes include recommended starting dilutions; optimal dilutions/concentrations should be determined by the end user.

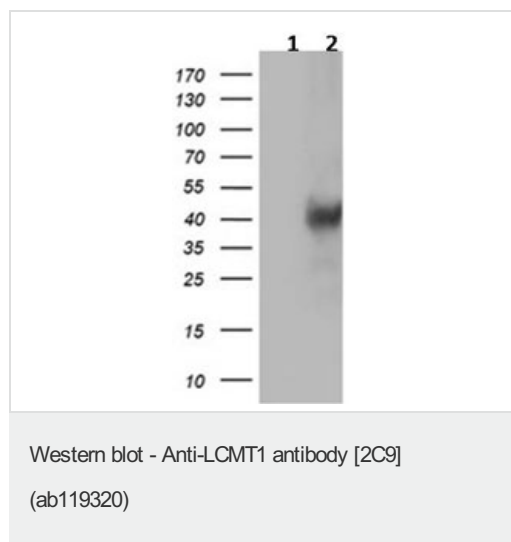
应用	Ab评论	说明
WB		1/500 - 1/2000. Predicted molecular weight: 38 kDa.
IHC-P		1/150.

## 靶标

**功能** Methylates the carboxyl group of the C-terminal leucine residue of protein phosphatase 2A catalytic subunits to form alpha-leucine ester residues.

**序列相似性** Belongs to the methyltransferase superfamily. LCMT family.

## 图片



**All lanes :** Anti-LCMT1 antibody [2C9] (ab119320) at 1/500 dilution

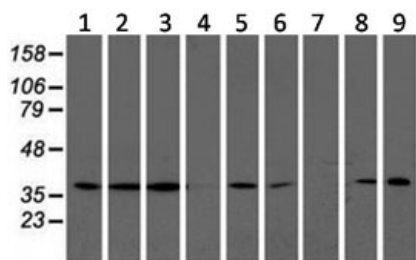
**Lane 1 :** HEK293T cells transfected with pCMV6-ENTRY control

**Lane 2 :** HEK293T cells transfected with pCMV6-ENTRY LCMT1 cDNA

Lysates/proteins at 5 µg per lane.

**Predicted band size:** 38 kDa

HEK293T cell lysates were generated from transient transfection of the cDNA clone (RC200018)



Western blot - Anti-LCMT1 antibody [2C9]  
(ab119320)

**All lanes :** Anti-LCMT1 antibody [2C9]

(ab119320) at 1/500 dilution

**Lane 1 :** HepG2 cell lysate

**Lane 2 :** HeLa cell lysate

**Lane 3 :** SVT2 cell lysate

**Lane 4 :** A549 cell lysate

**Lane 5 :** COS7 cell lysate

**Lane 6 :** Jurkat cell lysate

**Lane 7 :** MDCK cell lysate

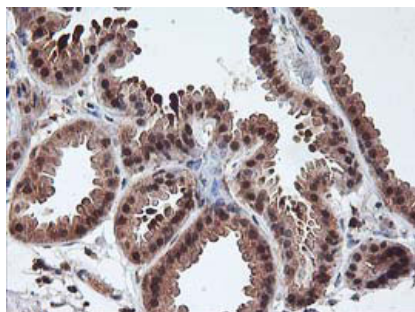
**Lane 8 :** PC12 cell lysate

**Lane 9 :** MCF7 cell lysate

Lysates/proteins at 35 µg per lane.

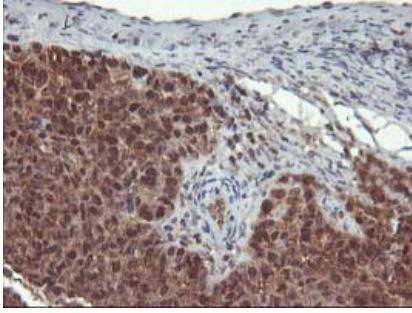
**Predicted band size:** 38 kDa

HEK293T cell lysates were generated from transient transfection of the cDNA clone (RC200018)



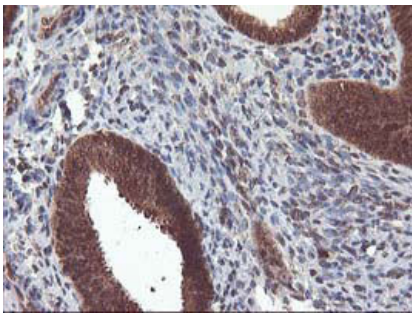
Immunohistochemistry (Formalin/PFA-fixed paraffin-embedded sections) - Anti-LCMT1 antibody [2C9]  
(ab119320)

ab119320 at 1/150 dilution staining LCMT1 in Human breast tissue by Immunohistochemistry Formalin-fixed, Paraffin-embedded tissue.



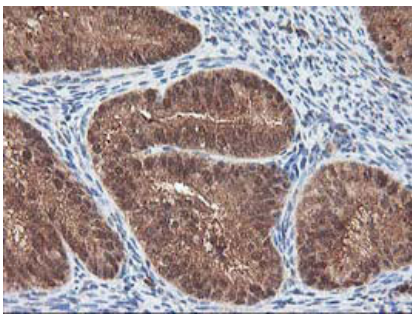
ab119320 at 1/150 dilution staining LCMT1 in Adenocarcinoma of Human ovary tissue by Immunohistochemistry Formalin-fixed, Paraffin-embedded tissue.

Immunohistochemistry (Formalin/PFA-fixed paraffin-embedded sections) - Anti-LCMT1 antibody [2C9] (ab119320)



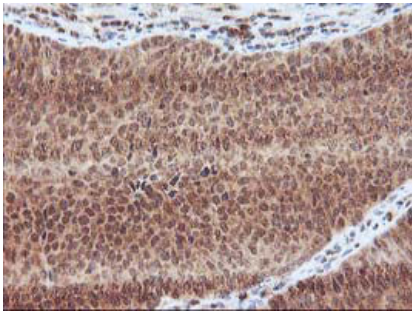
ab119320 at 1/150 dilution staining LCMT1 in Human endometrium tissue by Immunohistochemistry Formalin-fixed, Paraffin-embedded tissue.

Immunohistochemistry (Formalin/PFA-fixed paraffin-embedded sections) - Anti-LCMT1 antibody [2C9] (ab119320)



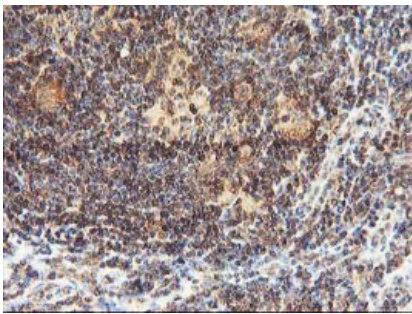
ab119320 at 1/150 dilution staining LCMT1 in Adenocarcinoma of Human endometrium tissue by Immunohistochemistry Formalin-fixed, Paraffin-embedded tissue.

Immunohistochemistry (Formalin/PFA-fixed paraffin-embedded sections) - Anti-LCMT1 antibody [2C9] (ab119320)



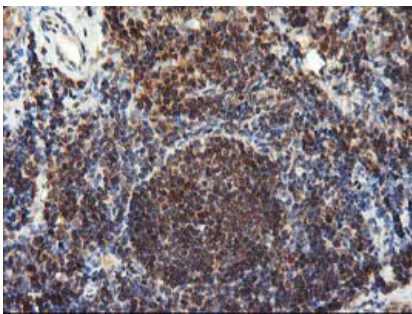
ab119320 at 1/150 dilution staining LCMT1 in Carcinoma of Human bladder tissue by Immunohistochemistry Formalin-fixed, Paraffin-embedded tissue.

Immunohistochemistry (Formalin/PFA-fixed paraffin-embedded sections) - Anti-LCMT1 antibody [2C9] (ab119320)



ab119320 at 1/150 dilution staining LCMT1 in Human lymphoma tissue by Immunohistochemistry Formalin-fixed, Paraffin-embedded tissue.

Immunohistochemistry (Formalin/PFA-fixed paraffin-embedded sections) - Anti-LCMT1 antibody [2C9] (ab119320)



ab119320 at 1/150 dilution staining LCMT1 in Human tonsil by Immunohistochemistry Formalin-fixed, Paraffin-embedded tissue.

Immunohistochemistry (Formalin/PFA-fixed paraffin-embedded sections) - Anti-LCMT1 antibody [2C9] (ab119320)

**Please note:** All products are "FOR RESEARCH USE ONLY AND ARE NOT INTENDED FOR DIAGNOSTIC OR THERAPEUTIC USE"

### Our Abpromise to you: Quality guaranteed and expert technical support

- Replacement or refund for products not performing as stated on the datasheet
- Valid for 12 months from date of delivery

- Response to your inquiry within 24 hours
- We provide support in Chinese, English, French, German, Japanese and Spanish
- Extensive multi-media technical resources to help you
- We investigate all quality concerns to ensure our products perform to the highest standards

If the product does not perform as described on this datasheet, we will offer a refund or replacement. For full details of the Abpromise, please visit <http://www.abcam.cn/abpromise> or contact our technical team.

### **Terms and conditions**

---

- Guarantee only valid for products bought direct from Abcam or one of our authorized distributors