

Product datasheet

Anti-DPP10 antibody [1A5] ab119250

4 图像

概述

产品名称	Anti-DPP10抗体[1A5]
描述	小鼠单克隆抗体[1A5] to DPP10
经测试应用	适用于: WB, IHC-P, Flow Cyt
种属反应性	与反应: Human
免疫原	Recombinant full length Human DPP10 produced in HEK293T cells (NP_065919.2).
阳性对照	Human Lung Carcinoma and Pancreas tissues; HEK293T cell lysate transfected with pCMV6-ENTRY DPP10 cDNA; HEK293T cells transfected with pCMV6-ENTRY DPP10 overexpress plasmid.
常规说明	Dilute in PBS (pH7.3) before use. Stable for 12 months from date of receipt.

性能

形式	Liquid
存放说明	Shipped at 4°C. Upon delivery aliquot and store at -20°C. Avoid repeated freeze / thaw cycles.
存储溶液	pH: 7.30 Preservative: 0.02% Sodium azide Constituents: 48% PBS, 50% Glycerol, 1% BSA
纯度	Protein G purified
纯化说明	ab119250 is purified from Mouse ascites fluid by affinity chromatography.
克隆	单克隆
克隆编号	1A5
同种型	IgG1

应用

Our [Abpromise guarantee](#) covers the use of **ab119250** in the following tested applications.

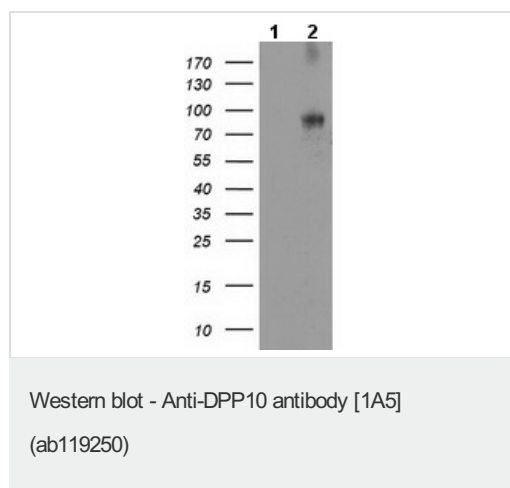
The application notes include recommended starting dilutions; optimal dilutions/concentrations should be determined by the end user.

应用	Ab评论	说明
WB		1/2000. Predicted molecular weight: 91 kDa.
IHC-P		1/150.
Flow Cyt		1/100. ab170190 -Mouse monoclonal IgG1, is suitable for use as an isotype control with this antibody.

靶标

功能	Has no dipeptidyl aminopeptidase activity. May modulate cell surface expression and activity of the potassium channels KCND1 and KCND2.
组织特异性	Found in serum, T-cells and brain (at protein level). Expressed in brain, pancreas, spinal cord and adrenal glands.
疾病相关	Genetic variations in DPP10 are associated with susceptibility to asthma (ASTHMA) [MIM:600807]. The most common chronic disease affecting children and young adults. It is a complex genetic disorder with a heterogeneous phenotype, largely attributed to the interactions among many genes and between these genes and the environment. It is characterized by recurrent attacks of paroxysmal dyspnea, with weezing due to spasmodic contraction of the bronchi.
序列相似性	Belongs to the peptidase S9B family. DPPIV subfamily.
翻译后修饰	N-glycosylated.
细胞定位	Membrane.

图片



All lanes : Anti-DPP10 antibody [1A5] (ab119250) at 1/2000 dilution

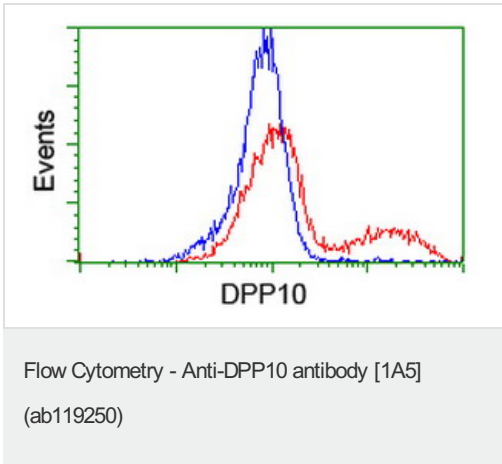
Lane 1 : HEK293T cell lysate transfected with pCMV6-ENTRY control cDNA

Lane 2 : HEK293T cell lysate transfected with pCMV6-ENTRY DPP10 cDNA

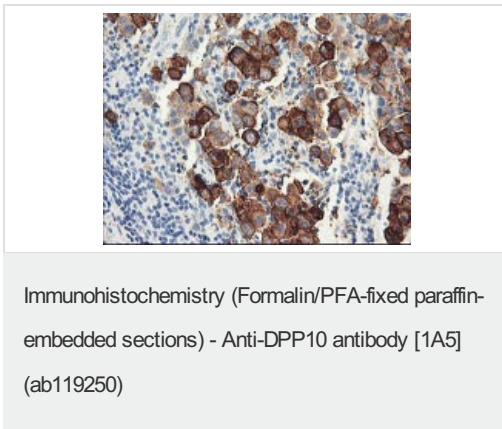
Lysates/proteins at 5 µg per lane.

Predicted band size : 91 kDa

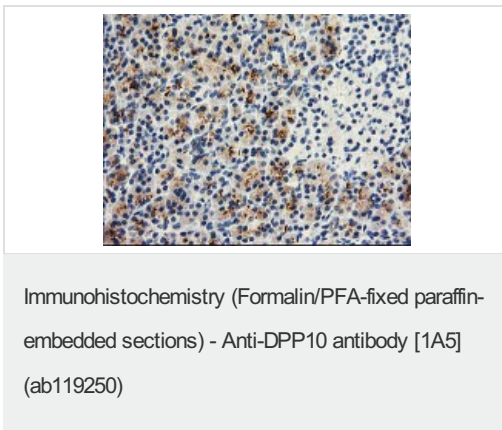
HEK293T cell lysates were generated from transient transfection of the cDNA clone (RC205435)



ab119249 at 1/100, staining DPP10 in HEK293T cells transfected with either pCMV6-ENTRY DPP10 overexpress plasmid (Red) or empty vector control plasmid (Blue) by flow cytometry.



ab119250, at 1/150, staining DPP10 in paraffin-embedded Human Lung Carcinoma tissue by Immunohistochemistry.



ab119250, at 1/150, staining DPP10 in paraffin-embedded Human Pancreas tissue by Immunohistochemistry.

Please note: All products are "FOR RESEARCH USE ONLY AND ARE NOT INTENDED FOR DIAGNOSTIC OR THERAPEUTIC USE"

Our Abpromise to you: Quality guaranteed and expert technical support

- Replacement or refund for products not performing as stated on the datasheet
- Valid for 12 months from date of delivery
- Response to your inquiry within 24 hours
- We provide support in Chinese, English, French, German, Japanese and Spanish
- Extensive multi-media technical resources to help you
- We investigate all quality concerns to ensure our products perform to the highest standards

If the product does not perform as described on this datasheet, we will offer a refund or replacement. For full details of the Abpromise, please visit <http://www.abcam.cn/abpromise> or contact our technical team.

Terms and conditions

- Guarantee only valid for products bought direct from Abcam or one of our authorized distributors