


Product datasheet

Anti-AP2 alpha + beta antibody ab11907

2 References 1 图像

概述

<b>产品名称</b>	Anti-AP2 alpha + beta抗体
<b>描述</b>	兔多克隆抗体to AP2 alpha + beta
<b>特异性</b>	This antibody recognizes both AP2 alpha A (50 kDa) and AP2 alpha B (40 kDa) forms of AP2.
<b>经测试应用</b>	<b>适用于:</b> WB
<b>种属反应性</b>	<b>与反应:</b> Mouse, Human <b>预测可用于:</b> Rat, Sheep, Chicken, Xenopus laevis 
<b>免疫原</b>	Synthetic peptide: GLDPRRDYRRHEDLL , corresponding to amino acids 120-134 of Human AP2 alpha + beta. <a href="#">Run BLAST with</a> <a href="#">Run BLAST with</a>
<b>阳性对照</b>	JEG-3 nuclear extract.
<b>常规说明</b>	The AP2 transcription factors form the OB2 complex that has been shown to up-regulate c-erbB-2 transcription.

性能

<b>形式</b>	Liquid
<b>存放说明</b>	Shipped at 4°C. Upon delivery aliquot and store at -20°C or -80°C. Avoid repeated freeze / thaw cycles.
<b>存储溶液</b>	Preservative: 0.1% Sodium Azide and 0.01% Thiomerosal. Constituents: PBS containing 0.2% Gelatin.
<b>纯度</b>	Immunogen affinity purified
<b>Primary antibody说明</b>	The AP2 transcription factors form the OB2 complex that has been shown to up-regulate c-erbB-2 transcription.
<b>克隆</b>	多克隆
<b>同种型</b>	IgG

应用

Our [Abpromise guarantee](#) covers the use of **ab11907** in the following tested applications.

The application notes include recommended starting dilutions; optimal dilutions/concentrations should be determined by the end user.

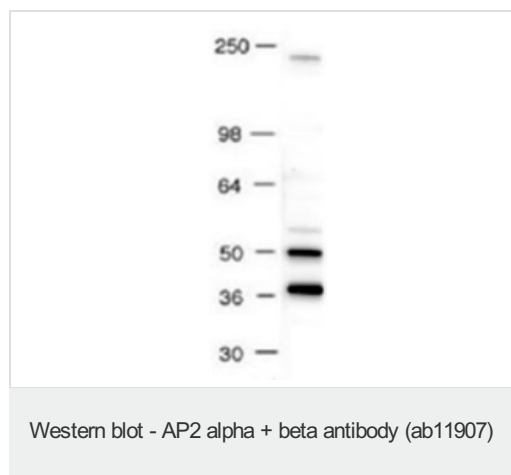
应用	Ab评论	说明
WB		1/500 - 1/1000. Detects a band of approximately 40, 50 kDa (predicted molecular weight: a=40, b=50 kDa).

## 靶标

**相关性** The AP2 proteins are normally expressed in ectodermally derived vertebrate tissues where they are necessary for normal growth and development. The factors have also been implicated in the control of cell proliferation, viral transformation, and oncogenesis. AP2 seems to play an important role in human breast cancer. AP2 alpha is the only AP2 protein required for early morphogenesis of the lens vesicle. AP2 beta appears to be required for normal face and limb development and for proper terminal differentiation and function of renal tubular epithelia

**细胞定位** Nuclear

## 图片



**Predicted band size :** a=40, b=50 kDa

Detection of AP2 by Western blot analysis. Activator protein 2 (AP2) can be detected in nuclear extracts derived from JEG-3 cells using AP2 rabbit polyclonal antibody at a 1/1000 dilution (lane 1). The signal corresponding to nuclear AP2 is eliminated by adding the immunizing peptide to the reaction (lane 2).

**Please note:** All products are "FOR RESEARCH USE ONLY AND ARE NOT INTENDED FOR DIAGNOSTIC OR THERAPEUTIC USE"

## Our Abpromise to you: Quality guaranteed and expert technical support

- Replacement or refund for products not performing as stated on the datasheet
- Valid for 12 months from date of delivery
- Response to your inquiry within 24 hours
- We provide support in Chinese, English, French, German, Japanese and Spanish
- Extensive multi-media technical resources to help you
- We investigate all quality concerns to ensure our products perform to the highest standards

If the product does not perform as described on this datasheet, we will offer a refund or replacement. For full details of the Abpromise, please visit <http://www.abcam.cn/abpromise> or contact our technical team.

## **Terms and conditions**

---

- Guarantee only valid for products bought direct from Abcam or one of our authorized distributors