

Product datasheet

Anti-AK3L1 antibody [3E1] ab119068

4 图像

概述

产品名称	Anti-AK3L1抗体[3E1]
描述	小鼠单克隆抗体[3E1] to AK3L1
宿主	Mouse
经测试应用	适用于: WB, Flow Cyt
种属反应性	与反应: Human, Monkey
免疫原	Recombinant full length Human AK3L1 produced in HEK293T cells (NP_037542).
阳性对照	HEK293T cell lysate transfected with pCMV6-ENTRY AK3L1 cDNA. HeLa, A549, COS7, and MCF7 cell extract. HeLa cells. HEK293T cells transfected with AK3L1 overexpress plasmid.
常规说明	Dilute in PBS (pH7.3) before use.

性能

形式	Liquid
存放说明	Shipped at 4°C. Upon delivery aliquot and store at -20°C. Avoid repeated freeze / thaw cycles.
存储溶液	pH: 7.30 Preservative: 0.02% Sodium azide Constituents: 48% PBS, 50% Glycerol, 1% BSA
纯度	Protein G purified
纯化说明	ab119068 was purified from mouse ascites fluids by affinity chromatography.
克隆	单克隆
克隆编号	3E1
同种型	IgG1

应用

Our [Abpromise guarantee](#) covers the use of **ab119068** in the following tested applications.

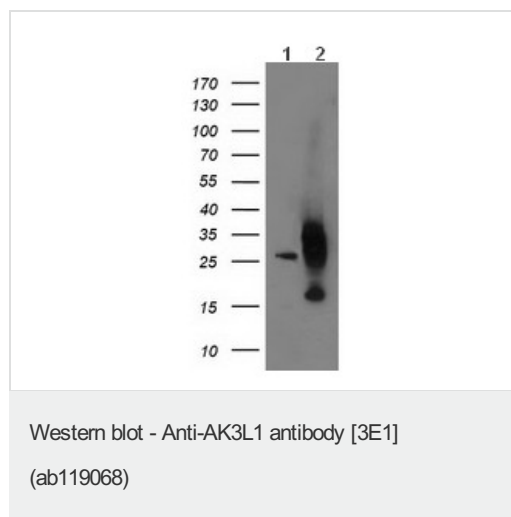
The application notes include recommended starting dilutions; optimal dilutions/concentrations should be determined by the end user.

应用	Ab评论	说明
WB		1/500 - 1/2000. Predicted molecular weight: 25 kDa.
Flow Cyt		1/100. ab170190 - Mouse monoclonal IgG1, is suitable for use as an isotype control with this antibody.

靶标

功能	Catalyzes the reversible transfer of the terminal phosphate group between ATP and AMP. May also be active with GTP.
序列相似性	Belongs to the adenylate kinase family.
细胞定位	Mitochondrion matrix.

图片



All lanes : Anti-AK3L1 antibody [3E1] (ab119068) at 1/500 dilution

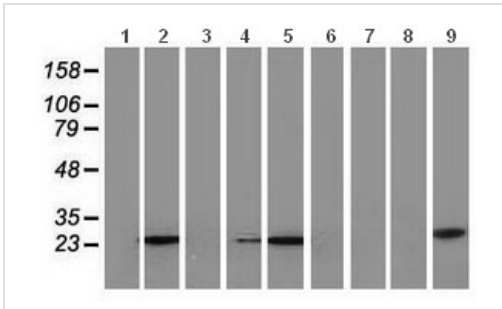
Lane 1 : HEK293T cell lysate transfected with pCMV6-ENTRY control

Lane 2 : HEK293T cell lysate transfected with pCMV6-ENTRY AK3L1 cDNA

Lysates/proteins at 5 µg per lane.

Predicted band size: 25 kDa

HEK293T cell lysates were generated from transient transfection of the cDNA clone (RC220572)



Western blot - Anti-AK3L1 antibody [3E1]
(ab119068)

All lanes : Anti-AK3L1 antibody [3E1]
(ab119068) at 1/500 dilution

Lane 1 : HepG2 cell lysate

Lane 2 : HeLa cell lysate

Lane 3 : SVT2 cell lysate

Lane 4 : A549 cell lysate

Lane 5 : COS7 cell lysate

Lane 6 : Jurkat cell lysate

Lane 7 : MDCK cell lysate

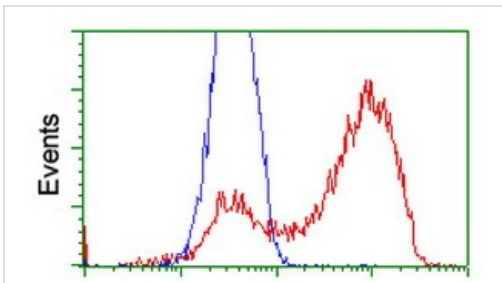
Lane 8 : PC12 cell lysate

Lane 9 : MCF7 cell lysate

Lysates/proteins at 35 µg per lane.

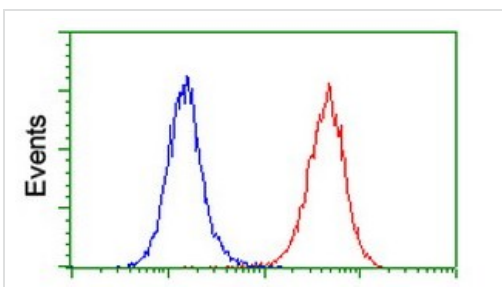
Predicted band size: 25 kDa

HEK293T cell lysates were generated from transient transfection of the cDNA clone (RC220572)



Flow Cytometry - Anti-AK3L1 antibody [3E1]
(ab119068)

HEK293T cells transfected with either AK3L1 overexpress plasmid (Red) or empty vector control plasmid (Blue) were immunostained by ab119068 at 1/100, and then analyzed by flow cytometry



Flow Cytometry - Anti-AK3L1 antibody [3E1]
(ab119068)

Flow cytometric analysis of HeLa cells, using ab119068 at 1/100 (Red), compared to a nonspecific negative control antibody (Blue).

Please note: All products are "FOR RESEARCH USE ONLY AND ARE NOT INTENDED FOR DIAGNOSTIC OR THERAPEUTIC USE"

Our Abpromise to you: Quality guaranteed and expert technical support

- Replacement or refund for products not performing as stated on the datasheet
- Valid for 12 months from date of delivery
- Response to your inquiry within 24 hours

- We provide support in Chinese, English, French, German, Japanese and Spanish
- Extensive multi-media technical resources to help you
- We investigate all quality concerns to ensure our products perform to the highest standards

If the product does not perform as described on this datasheet, we will offer a refund or replacement. For full details of the Abpromise, please visit <http://www.abcam.cn/abpromise> or contact our technical team.

Terms and conditions

- Guarantee only valid for products bought direct from Abcam or one of our authorized distributors