

Product datasheet

Anti-SNAPIN antibody ab118392

4 图像

概述

产品名称	Anti-SNAPIN抗体
描述	小鼠单克隆抗体to SNAPIN
经测试应用	适用于: ELISA, WB, IHC-P, Sandwich ELISA, Flow Cyt
种属反应性	与反应: Human
免疫原	Recombinant fragment of Human SNAPIN (amino acids 41-136) with N terminal proprietary tag, 11kDa (without tag). (NP_036569). Run BLAST with ExPASy Run BLAST with NCBI
阳性对照	Human tonsil tissue.

性能

形式	Liquid
存放说明	Shipped at 4°C. Upon delivery aliquot. Store at -20°C or -80°C. Avoid freeze / thaw cycle.
存储溶液	pH: 7.20 Constituent: 99% PBS
纯度	Protein A purified
克隆	单克隆
同种型	IgG1
轻链类型	kappa

应用

Our [Abpromise guarantee](#) covers the use of **ab118392** in the following tested applications.

The application notes include recommended starting dilutions; optimal dilutions/concentrations should be determined by the end user.

应用	Ab 评论	说明
----	-------	----

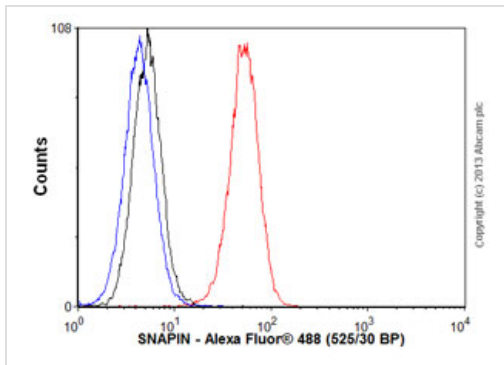
ELISA	Use at an assay dependent concentration.
-------	--

应用	Ab 评论	说明
WB		Use a concentration of 1 - 5 µg/ml. Predicted molecular weight: 15 kDa. This antibody has only been tested in WB against the recombinant fragment used as immunogen. We have no data on the detection of endogenous protein.
IHC-P		Use a concentration of 3 µg/ml. Perform heat mediated antigen retrieval with citrate buffer pH 6 before commencing with IHC staining protocol.
Sandwich ELISA		Use at an assay dependent concentration.
Flow Cyt		Use 0.1µg for 10 ⁶ cells. ab170190 -Mouse monoclonal IgG1, is suitable for use as an isotype control with this antibody.

靶标

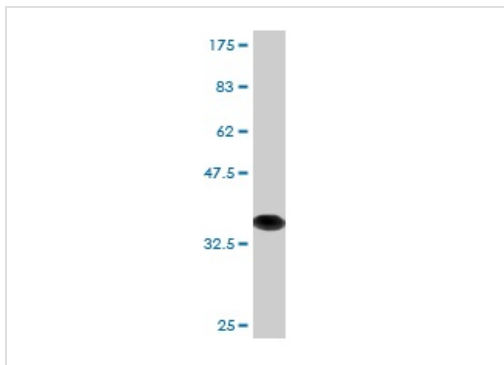
功能	May modulate a step between vesicle priming, fusion and calcium-dependent neurotransmitter release by potentiating the interaction of synaptotagmins with the SNAREs and the plasma-membrane-associated protein SNAP25. Its phosphorylation state influences exocytotic protein interactions and may regulate synaptic vesicle exocytosis. May also have a role in the mechanisms of SNARE-mediated membrane fusion in non-neuronal cells.
组织特异性	Expressed in male germ cells of adult testis (at protein level).
序列相似性	Belongs to the SNAPIN family.
发展阶段	Expressed in germ cells of 22-week prenatal testis.
细胞定位	Cytoplasm. Membrane. Cytoplasmic vesicle membrane. Cytoplasmic vesicle > secretory vesicle > synaptic vesicle membrane. Cell junction > synapse > synaptosome. Cytoplasm > perinuclear region. May be cytoplasmic and peripheral membrane bound or anchored to the vesicular membrane through an N-terminal signal anchor (By similarity). Co-localizes with NANOS1 and PUM2 in the perinuclear region of germ cells.

图片



Flow Cytometry - Anti-SNAPIN antibody (ab118392)

Overlay histogram showing HeLa cells stained with ab118392 (red line). The cells were fixed with 80% methanol (5 min) and then permeabilized with 0.1% PBS-Tween for 20 min. The cells were then incubated in 1x PBS / 10% normal goat serum / 0.3M glycine to block non-specific protein-protein interactions followed by the antibody (ab118392, 0.1µg/1x10⁶ cells) for 30 min at 22°C. The secondary antibody used was Alexa Fluor® 488 goat anti-mouse IgG (H&L) (ab150113) at 1/2000 dilution for 30 min at 22°C. Isotype control antibody (black line) was mouse IgG1 [ICIGG1] (ab91353, 1µg/1x10⁶ cells) used under the same conditions. Unlabelled sample (blue line) was also used as a control. Acquisition of >5,000 events were collected using a 20mW Argon ion laser (488nm) and 525/30 bandpass filter.

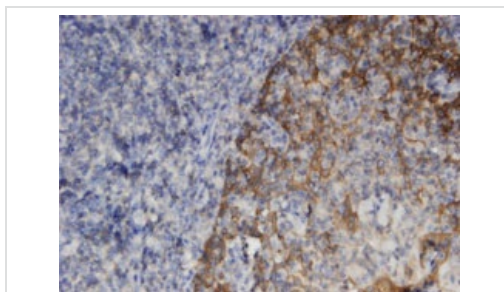


Western blot - Anti-SNAPIN antibody (ab118392)

Anti-SNAPIN antibody (ab118392) at 5 µg/ml + recombinant immunogen at 0.2 µg

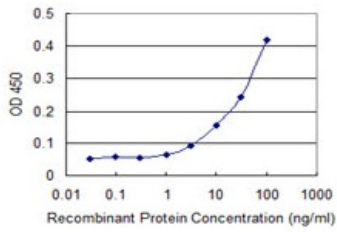
Predicted band size : 15 kDa

Western blot against tagged recombinant immunogen using ab118392 antibody at 5µg/ml dilution. Predicted band size of immunogen is 36.67kDa.



Immunohistochemistry (Formalin/PFA-fixed paraffin-embedded sections) - Anti-SNAPIN antibody (ab118392)

ab118392, at 3 ug/ml, staining SNAPIN in formalin-fixed, paraffin-embedded Human tonsil tissue by Immunohistochemistry.



Detection limit for recombinant tagged SNAPIN is 1 ng/ml as a capture antibody.

Sandwich ELISA - Anti-SNAPIN antibody
(ab118392)

Please note: All products are "FOR RESEARCH USE ONLY AND ARE NOT INTENDED FOR DIAGNOSTIC OR THERAPEUTIC USE"

Our Abpromise to you: Quality guaranteed and expert technical support

- Replacement or refund for products not performing as stated on the datasheet
- Valid for 12 months from date of delivery
- Response to your inquiry within 24 hours
- We provide support in Chinese, English, French, German, Japanese and Spanish
- Extensive multi-media technical resources to help you
- We investigate all quality concerns to ensure our products perform to the highest standards

If the product does not perform as described on this datasheet, we will offer a refund or replacement. For full details of the Abpromise, please visit <http://www.abcam.cn/abpromise> or contact our technical team.

Terms and conditions

- Guarantee only valid for products bought direct from Abcam or one of our authorized distributors