

Product datasheet

Anti-PIM2 antibody [9A5] ab118157

9 图像

概述

产品名称	Anti-PIM2抗体[9A5]
描述	小鼠单克隆抗体[9A5] to PIM2
宿主	Mouse
经测试应用	适用于: WB, IHC-P, Flow Cyt, ICC/IF
种属反应性	与反应: Dog, Human
免疫原	Recombinant full length Human PIM2 produced in HEK293T cells (NP_006866).
阳性对照	HEK293T cell lysate transfected with pCMV6-ENTRY PIM2 cDNA; HepG2, HeLa, HT29, A549, Jurakt, MDCK, and MCF7 cell extracts; Human colon, liver, and prostate tissues; COS7 cells transiently transfected by pCMV6-ENTRY PIM2, HeLa and Jurkat cells.
常规说明	Dilute in PBS (pH7.3) before use. Stable for 12 months from date of receipt.

性能

形式	Liquid
存放说明	Shipped at 4°C. Upon delivery aliquot and store at -20°C. Avoid repeated freeze / thaw cycles.
存储溶液	pH: 7.30 Preservative: 0.02% Sodium azide Constituents: 48% PBS, 1% BSA, 50% Glycerol
纯度	Protein A purified
纯化说明	ab118157 is purified from Mouse ascites fluid by affinity chromatography.
克隆	单克隆
克隆编号	9A5
同种型	IgG2a

应用

Our [Abpromise guarantee](#) covers the use of **ab118157** in the following tested applications.

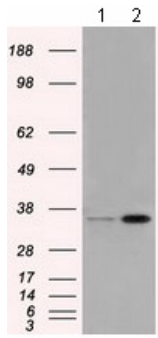
The application notes include recommended starting dilutions; optimal dilutions/concentrations should be determined by the end user.

应用	Ab评论	说明
WB		1/1000 - 1/2000. Predicted molecular weight: 34 kDa.
IHC-P		1/50.
Flow Cyt		1/100. ab170191 - Mouse monoclonal IgG2a, is suitable for use as an isotype control with this antibody.
ICC/IF		1/100.

靶标

功能	Promotes cell survival in response to a variety of proliferative signals via positive regulation of the I-kappaB kinase/NF-kappaB cascade; this process requires phosphorylation of MAP3K8/COT. Prevents apoptosis induced by growth factor withdrawal via inhibition of caspase-3 activation, and via phosphorylation of pro-apoptotic proteins. Inhibits BAD-induced cell death via phosphorylation of BAD. PIM2-mediated cell survival is glucose-dependent but independent of several AKT regulators such as PI3K, HSP-90 and TOR, indicating that PIM2 and PI3K/AKT/TOR function via distinct pathways. Involved in the positive regulation of chondrocyte survival and autophagy in the epiphyseal growth plate.
组织特异性	Highly expressed in hematopoietic tissues, in leukemic and lymphoma cell lines, testis, small intestine, colon and colorectal adenocarcinoma cells. Weakly expressed in normal liver, but highly expressed in hepatocellular carcinoma tissues.
序列相似性	Belongs to the protein kinase superfamily. CAMK Ser/Thr protein kinase family. PIM subfamily. Contains 1 protein kinase domain.
翻译后修饰	Autophosphorylated.

图片



Western blot - Anti-PIM2 antibody [9A5] (ab118157)

All lanes : Anti-PIM2 antibody [9A5]
(ab118157) at 1/1000 dilution

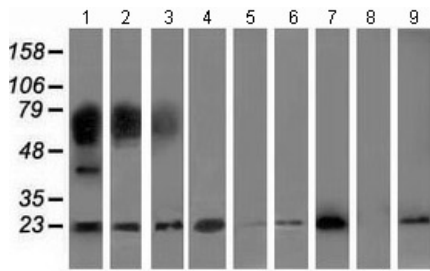
Lane 1 : HEK293T cell lysate transfected with
pCMV6-ENTRY control cDNA

Lane 2 : HEK293T cell lysate transfected with
pCMV6-ENTRY PIM2 cDNA

Lysates/proteins at 5 µg per lane.

Predicted band size: 34 kDa

HEK293T cell lysates were generated from
transient transfection of the cDNA clone
(RC201933)



Western blot - Anti-PIM2 antibody [9A5] (ab118157)

All lanes : Anti-PIM2 antibody [9A5]
(ab118157) at 1/1000 dilution

Lane 1 : HepG2 cell extract

Lane 2 : HeLa cell extract

Lane 3 : HT29 cell extract

Lane 4 : A549 cell extract

Lane 5 : COS7 cell extract

Lane 6 : Jurkat cell extract

Lane 7 : MDCK cell extract

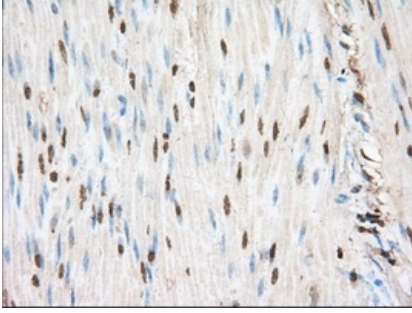
Lane 8 : PC12 cell extract

Lane 9 : MCF7 cell extract

Lysates/proteins at 35 µg per lane.

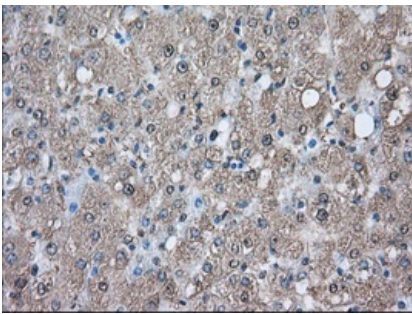
Predicted band size: 34 kDa

HEK293T cell lysates were generated from
transient transfection of the cDNA clone
(RC201933)



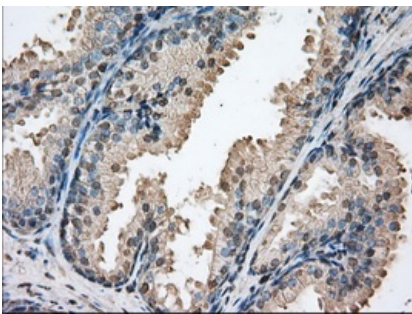
ab118157 at 1/50 dilution staining PIM2 in Paraffin-embedded Human Colon tissue by Immunohistochemistry.

Immunohistochemistry (Formalin/PFA-fixed paraffin-embedded sections) - Anti-PIM2 antibody [9A5] (ab118157)



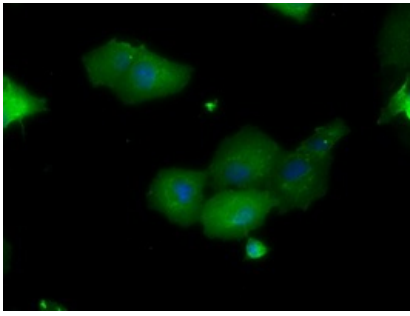
ab118157 at 1/50 dilution staining PIM2 in Paraffin-embedded Human Liver tissue by Immunohistochemistry.

Immunohistochemistry (Formalin/PFA-fixed paraffin-embedded sections) - Anti-PIM2 antibody [9A5] (ab118157)



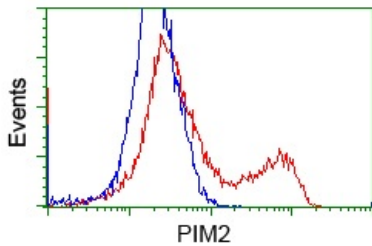
ab118157 at 1/50 dilution staining PIM2 in Paraffin-embedded Human Prostate tissue by Immunohistochemistry.

Immunohistochemistry (Formalin/PFA-fixed paraffin-embedded sections) - Anti-PIM2 antibody [9A5] (ab118157)



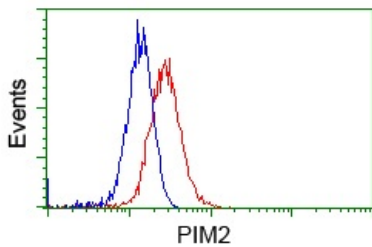
Immunocytochemistry/ Immunofluorescence - Anti-PIM2 antibody [9A5] (ab118157)

ab118157 at 1/100 dilution staining PIM2 in COS7 cells transiently transfected by pCMV6-ENTRY PIM2 by Immunofluorescence.



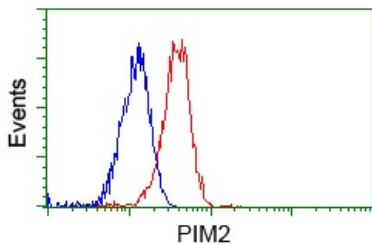
Flow Cytometry - Anti-PIM2 antibody [9A5] (ab118157)

HEK293T cells transfected with either pCMV6-ENTRY PIM2 overexpress plasmid (Red) or empty vector control plasmid (Blue) immunostained by ab118157 at a dilution of 1/100, then analyzed by flow cytometry.



Flow Cytometry - Anti-PIM2 antibody [9A5] (ab118157)

Flow cytometric Analysis of HeLa cells, using ab118157 at 1/100 (Red), compared to a nonspecific negative control antibody (Blue).



Flow Cytometry - Anti-PIM2 antibody [9A5] (ab118157)

Flow cytometric Analysis of Jurkat cells, using ab118157 at 1/100 (Red), compared to a nonspecific negative control antibody (Blue).

Our Abpromise to you: Quality guaranteed and expert technical support

- Replacement or refund for products not performing as stated on the datasheet
- Valid for 12 months from date of delivery
- Response to your inquiry within 24 hours

- We provide support in Chinese, English, French, German, Japanese and Spanish
- Extensive multi-media technical resources to help you
- We investigate all quality concerns to ensure our products perform to the highest standards

If the product does not perform as described on this datasheet, we will offer a refund or replacement. For full details of the Abpromise, please visit <http://www.abcam.cn/abpromise> or contact our technical team.

Terms and conditions

- Guarantee only valid for products bought direct from Abcam or one of our authorized distributors