

Product datasheet

Anti-CUG-BP1 antibody [5B8] ab118036

10 图像

概述

产品名称	Anti-CUG-BP1抗体[5B8]
描述	小鼠单克隆抗体[5B8] to CUG-BP1
经测试应用	适用于: Flow Cyt, WB, IHC-P, ICC/IF
种属反应性	与反应: Human
免疫原	Recombinant full length Human CUG-BP1 produced in HEK293T cells (NP_006551).
阳性对照	HEK293T cells were transfected with the pCMV6-ENTRY CUG-BP1; Adenocarcinoma of colon tissue; Kidney tissue; liver tissue; ovary tissue; pancreas tissue; prostate tissue; Carcinoma of prostate tissue; COS7 cells transiently transfected by pCMV6-ENTRY CUG-BP1

性能

形式	Liquid
存放说明	Shipped at 4°C. Upon delivery aliquot and store at -20°C. Avoid freeze / thaw cycles.
存储溶液	pH: 7.30 Preservative: 0.02% Sodium azide Constituents: 48% PBS, 1% BSA, 50% Glycerol
纯度	Protein A purified
纯化说明	ab118036 was purified from mouse ascites fluids by affinity chromatography.
克隆	单克隆
克隆编号	5B8
同种型	IgG2b

应用

Our [Abpromise guarantee](#) covers the use of **ab118036** in the following tested applications.

The application notes include recommended starting dilutions; optimal dilutions/concentrations should be determined by the end user.

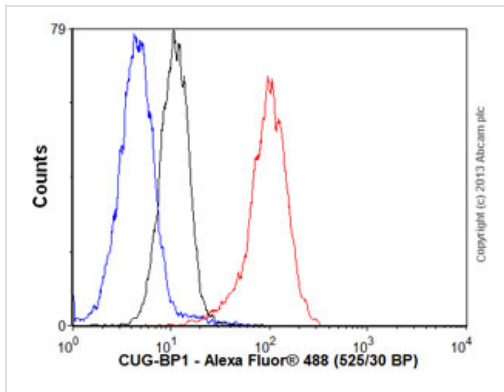
应用	Ab评论	说明
Flow Cyt		1/100. <a href="#">ab170192</a> -Mouse monoclonal IgG2b, is suitable for use as an isotype control with this antibody.

应用	Ab评论	说明
WB		1/2000. Predicted molecular weight: 52 kDa.
IHC-P		1/50.
ICC/IF		1/100.

## 靶标

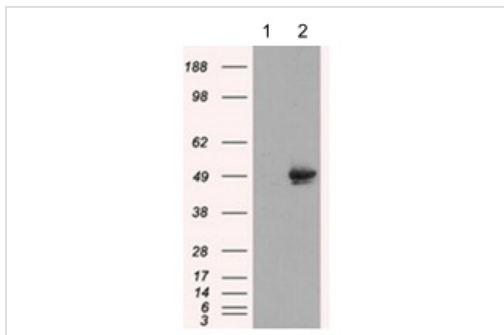
<b>功能</b>	<p>RNA-binding protein implicated in the regulation of several post-transcriptional events. Involved in pre-mRNA alternative splicing, mRNA translation and stability. Mediates exon inclusion and/or exclusion in pre-mRNA that are subject to tissue-specific and developmentally regulated alternative splicing. Specifically activates exon 5 inclusion of cardiac isoforms of TNNT2 during heart remodeling at the juvenile to adult transition. Acts as both an activator and repressor of a pair of coregulated exons: promotes inclusion of the smooth muscle (SM) exon but exclusion of the non-muscle (NM) exon in actinin pre-mRNAs. Activates SM exon 5 inclusion by antagonizing the repressive effect of PTB. Promotes exclusion of exon 11 of the INSR pre-mRNA. Inhibits, together with HNRNPH1, insulin receptor (IR) pre-mRNA exon 11 inclusion in myoblast. Increases translation and controls the choice of translation initiation codon of CEBPB mRNA. Increases mRNA translation of CEBPB in aging liver (By similarity). Increases translation of CDKN1A mRNA by antagonizing the repressive effect of CALR3. Mediates rapid cytoplasmic mRNA deadenylation. Recruits the deadenylase PARN to the poly(A) tail of EDEN-containing mRNAs to promote their deadenylation. Required for completion of spermatogenesis (By similarity). Binds to (CUG)<sub>n</sub> triplet repeats in the 3'-UTR of transcripts such as DMPK and to Bruno response elements (BREs). Binds to muscle-specific splicing enhancer (MSE) intronic sites flanking the alternative exon 5 of TNNT2 pre-mRNA. Binds to AU-rich sequences (AREs or EDEN-like) localized in the 3'-UTR of JUN and FOS mRNAs. Binds to the IR RNA. Binds to the 5'-region of CDKN1A and CEBPB mRNAs. Binds with the 5'-region of CEBPB mRNA in aging liver.</p>
<b>组织特异性</b>	Ubiquitous.
<b>序列相似性</b>	<p>Belongs to the CELF/BRUNOL family.</p> <p>Contains 3 RRM (RNA recognition motif) domains.</p>
<b>翻译后修饰</b>	Phosphorylated. Its phosphorylation status increases in senescent cells.
<b>细胞定位</b>	Nucleus. Cytoplasm. RNA-binding activity is detected in both nuclear and cytoplasmic compartments.

## 图片



Flow Cytometry - Anti-CUG-BP1 antibody [5B8]  
(ab118036)

Overlay histogram showing HeLa cells stained with ab118036 (red line). The cells were fixed with 80% methanol (5 min) and then permeabilized with 0.1% PBS-Tween for 20 min. The cells were then incubated in 1x PBS / 10% normal goat serum / 0.3M glycine to block non-specific protein-protein interactions followed by the antibody (ab118036, 1/100 dilution) for 30 min at 22°C. The secondary antibody used was Alexa Fluor® 488 goat anti-mouse IgG (H+L) (ab150113) at 1/2000 dilution for 30 min at 22°C. Isotype control antibody (black line) was mouse IgG2b [PLPV219] (ab91366, 1 µg/1x10<sup>6</sup> cells) used under the same conditions. Unlabelled sample (blue line) was also used as a control. Acquisition of >5,000 events were collected using a 20mW Argon ion laser (488nm) and 525/30 bandpass filter.



Western blot - Anti-CUG-BP1 antibody [5B8]  
(ab118036)

**All lanes :** Anti-CUG-BP1 antibody [5B8]  
(ab118036) at 1/2000 dilution

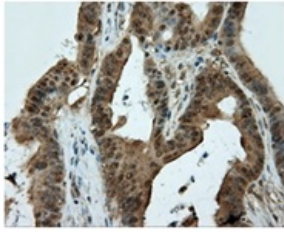
**Lane 1 :** HEK293T cells transfected with the pCMV6-ENTRY control

**Lane 2 :** HEK293T cells transfected with the pCMV6-ENTRY CUG-BP1 cDNA

Lysates/proteins at 5 µg per lane.

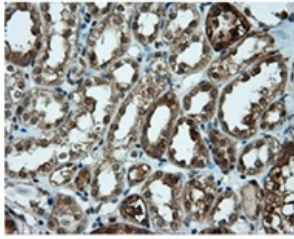
**Predicted band size :** 52 kDa

HEK293T cell lysates were generated from transient transfection of the cDNA clone (RC201477)



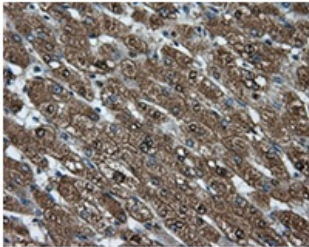
Immunohistochemical staining of paraffin-embedded Adenocarcinoma of colon tissue using 1/50 ab118036.

Immunohistochemistry (Formalin/PFA-fixed paraffin-embedded sections) - Anti-CUG-BP1 antibody [5B8] (ab118036)



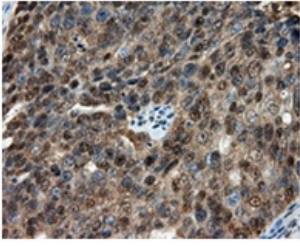
Immunohistochemical staining of paraffin-embedded kidney tissue using 1/50 ab118036.

Immunohistochemistry (Formalin/PFA-fixed paraffin-embedded sections) - Anti-CUG-BP1 antibody [5B8] (ab118036)



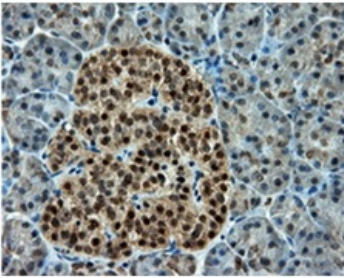
Immunohistochemical staining of paraffin-embedded liver tissue using 1/50 ab118036.

Immunohistochemistry (Formalin/PFA-fixed paraffin-embedded sections) - Anti-CUG-BP1 antibody [5B8] (ab118036)



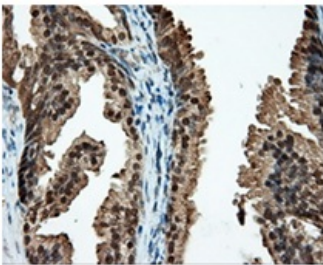
Immunohistochemistry (Formalin/PFA-fixed paraffin-embedded sections) - Anti-CUG-BP1 antibody [5B8] (ab118036)

Immunohistochemical staining of paraffin-embedded Adenocarcinoma of ovary tissue using 1/50 ab118036.



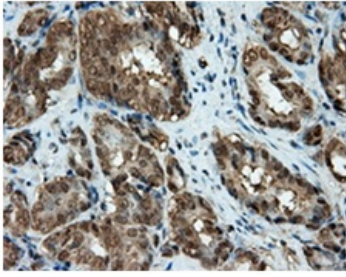
Immunohistochemistry (Formalin/PFA-fixed paraffin-embedded sections) - Anti-CUG-BP1 antibody [5B8] (ab118036)

Immunohistochemical staining of paraffin-embedded pancreas tissue using 1/50 ab118036.



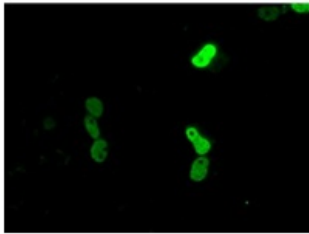
Immunohistochemistry (Formalin/PFA-fixed paraffin-embedded sections) - Anti-CUG-BP1 antibody [5B8] (ab118036)

Immunohistochemical staining of paraffin-embedded prostate tissue using 1/50 ab118036.



Immunohistochemical staining of paraffin-embedded Adenocarcinoma of prostate tissue using 1/50 ab118036.

Immunohistochemistry (Formalin/PFA-fixed paraffin-embedded sections) - Anti-CUG-BP1 antibody [5B8] (ab118036)



ab118036 at 1/100 immunofluorescent staining of COS7 cells transiently transfected by pCMV6-ENTRY CUG-BP1

Immunocytochemistry/ Immunofluorescence - Anti-CUG-BP1 antibody [5B8] (ab118036)

**Please note:** All products are "FOR RESEARCH USE ONLY AND ARE NOT INTENDED FOR DIAGNOSTIC OR THERAPEUTIC USE"

### Our Abpromise to you: Quality guaranteed and expert technical support

- Replacement or refund for products not performing as stated on the datasheet
- Valid for 12 months from date of delivery
- Response to your inquiry within 24 hours
- We provide support in Chinese, English, French, German, Japanese and Spanish
- Extensive multi-media technical resources to help you
- We investigate all quality concerns to ensure our products perform to the highest standards

If the product does not perform as described on this datasheet, we will offer a refund or replacement. For full details of the Abpromise, please visit <http://www.abcam.cn/abpromise> or contact our technical team.

### Terms and conditions

- Guarantee only valid for products bought direct from Abcam or one of our authorized distributors