

Product datasheet

Anti-POLR2J2 antibody [8F10] ab118019

2 图像

概述

产品名称	Anti-POLR2J2抗体[8F10]
描述	小鼠单克隆抗体[8F10] to POLR2J2
经测试应用	适用于: WB
种属反应性	与反应: Rat, Dog, Human, Monkey
免疫原	Recombinant full length Human POLR2J2 produced in HEK293T cells (NP_116581).
阳性对照	HEK293T cell lysate transfected with pCMV6-ENTRY POLR2J2 cDNA; HepG2, HeLa, HT29, A549, COS7, Jurkat, MDCK, PC12, and MCF7 cell extracts.
常规说明	Dilute in PBS (pH7.3) before use. Stable for 12 months from date of receipt.

性能

形式	Liquid
存放说明	Shipped at 4°C. Upon delivery aliquot and store at -20°C. Avoid repeated freeze / thaw cycles.
存储溶液	pH: 7.30 Preservative: 0.02% Sodium azide Constituents: 48% PBS, 50% Glycerol, 1% BSA
纯度	Protein A purified
纯化说明	ab118019 was purified from Mouse ascites fluids by affinity chromatography.
克隆	单克隆
克隆编号	8F10
同种型	IgG2a

应用

Our [Abpromise guarantee](#) covers the use of **ab118019** in the following tested applications.

The application notes include recommended starting dilutions; optimal dilutions/concentrations should be determined by the end user.

应用	Ab评论	说明
WB		1/1000 - 1/2000. Predicted molecular weight: 13 kDa.

## 靶标

### 功能

DNA-dependent RNA polymerase catalyzes the transcription of DNA into RNA using the four ribonucleoside triphosphates as substrates. Component of RNA polymerase II which synthesizes mRNA precursors and many functional non-coding RNAs. Pol II is the central component of the basal RNA polymerase II transcription machinery. It is composed of mobile elements that move relative to each other. RPB11 is part of the core element with the central large cleft.

### 组织特异性

Ubiquitously expressed.

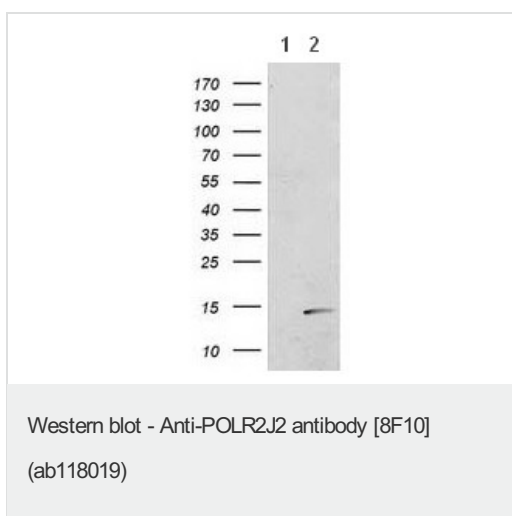
### 序列相似性

Belongs to the archaeal rpoL/eukaryotic RPB11/RPC19 RNA polymerase subunit family.

### 细胞定位

Nucleus.

## Anti-POLR2J2 antibody [8F10] 图像



**All lanes :** Anti-POLR2J2 antibody [8F10]

(ab118019) at 1/1000 dilution

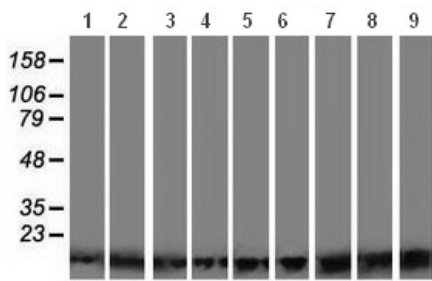
**Lane 1 :** HEK293T cell lysate transfected with pCMV6-ENTRY control

**Lane 2 :** HEK293T cell lysate transfected with pCMV6-ENTRY POLR2J2 cDNA

Lysates/proteins at 5 µg per lane.

**Predicted band size :** 13 kDa

HEK293T cell lysates were generated from transient transfection of the cDNA clone (RC201397)



Western blot - Anti-POLR2J2 antibody [8F10]  
(ab118019)

**All lanes** : Anti-POLR2J2 antibody [8F10]  
(ab118019) at 1/1000 dilution

**Lane 1** : HepG2 cell extract

**Lane 2** : HeLa cell extract

**Lane 3** : HT29 cell extract

**Lane 4** : A549 cell extract

**Lane 5** : COS7 cell extract

**Lane 6** : Jurkat cell extract

**Lane 7** : MDCK cell extract

**Lane 8** : PC12 cell extract

**Lane 9** : MCF7 cell extract

Lysates/proteins at 35 µg per lane.

**Predicted band size** : 13 kDa

HEK293T cell lysates were generated from  
transient transfection of the cDNA clone  
(RC201364)

**Please note:** All products are "FOR RESEARCH USE ONLY AND ARE NOT INTENDED FOR DIAGNOSTIC OR THERAPEUTIC USE"

### Our Abpromise to you: Quality guaranteed and expert technical support

- Replacement or refund for products not performing as stated on the datasheet
- Valid for 12 months from date of delivery
- Response to your inquiry within 24 hours
- We provide support in Chinese, English, French, German, Japanese and Spanish
- Extensive multi-media technical resources to help you
- We investigate all quality concerns to ensure our products perform to the highest standards

If the product does not perform as described on this datasheet, we will offer a refund or replacement. For full details of the Abpromise, please visit <http://www.abcam.cn/abpromise> or contact our technical team.

### Terms and conditions

- Guarantee only valid for products bought direct from Abcam or one of our authorized distributors