

Product datasheet

Anti-Lipin 2 antibody ab117933

1 图像

概述

产品名称	Anti-Lipin 2抗体
描述	兔多克隆抗体 to Lipin 2
宿主	Rabbit
经测试应用	适用于: WB
种属反应性	与反应: Human 预测可用于: Mouse, Rat, Rabbit, Horse, Chicken, Guinea pig, Cow, Cat, Dog, Zebrafish
免疫原	Synthetic peptide, corresponding to a region within C terminal amino acids 837-886 (ELIQERTKGN KSSYHRLSEL VEHVFPLLSK EQNSAFPCPE FSSFYWRDP) of Human Lipin 2 (NP_055461). Run BLAST with ExPASy Run BLAST with NCBI
阳性对照	HeLa cell lysate.

性能

形式	Liquid
存放说明	Shipped at 4°C. Upon delivery aliquot and store at -20°C. Avoid repeated freeze / thaw cycles.
存储溶液	Constituents: 97% PBS, 2% Sucrose
纯度	Immunogen affinity purified
克隆	多克隆
同种型	IgG

应用

Our [Abpromise guarantee](#) covers the use of **ab117933** in the following tested applications.

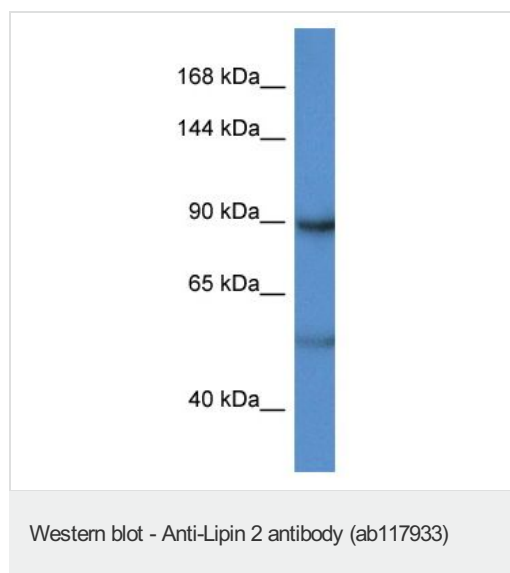
The application notes include recommended starting dilutions; optimal dilutions/concentrations should be determined by the end user.

应用	Ab评论	说明
WB		Use a concentration of 1 µg/ml. Predicted molecular weight: 99 kDa. Good results were obtained when blocked with 5% non-fat dry milk in 0.05% PBS-T.

靶标

功能	Plays important roles in controlling the metabolism of fatty acids at different levels. Acts as a magnesium-dependent phosphatidate phosphatase enzyme which catalyzes the conversion of phosphatidic acid to diacylglycerol during triglyceride, phosphatidylcholine and phosphatidylethanolamine biosynthesis in the reticulum endoplasmic membrane. Acts also as a nuclear transcriptional coactivator for PARGC1A to modulate lipid metabolism.
组织特异性	Expressed in liver, lung, kidney, placenta, spleen, thymus, lymph node, prostate, testes, small intestine, and colon.
疾病相关	Defects in LPIN2 are the cause of Majeed syndrome (MAJEEDS) [MIM:609628]. An autosomal recessive syndrome characterized by chronic recurrent multifocal osteomyelitis that is of early onset with a lifelong course, congenital dyserythropoietic anemia that presents as hypochromic, microcytic anemia during the first year of life and ranges from mild to transfusion-dependent, and transient inflammatory dermatosis, often manifesting as Sweet syndrome (neutrophilic skin infiltration).
序列相似性	Belongs to the lipin family.
结构域	Contains 1 Asp-Xaa-Asp-Xaa-Thr (DXDXT) motif, a catalytic motif known to be essential for phosphatidate phosphatase activity. Contains one Leu-Xaa-Xaa-Ile-Leu (LXXIL) motif, a motif known to be a transcriptional binding motif.
细胞定位	Nucleus. Cytoplasm > cytosol. Endoplasmic reticulum membrane. Translocates to endoplasmic reticulum membrane with increasing levels of oleate.

图片



Anti-Lipin 2 antibody (ab117933) at 1 µg/ml +
HeLa cell lysate at 10 µg

Predicted band size: 99 kDa

Gel concentration: 6-18%.

Please note: All products are "FOR RESEARCH USE ONLY AND ARE NOT INTENDED FOR DIAGNOSTIC OR THERAPEUTIC USE"

Our Abpromise to you: Quality guaranteed and expert technical support

- Replacement or refund for products not performing as stated on the datasheet
- Valid for 12 months from date of delivery
- Response to your inquiry within 24 hours

- We provide support in Chinese, English, French, German, Japanese and Spanish
- Extensive multi-media technical resources to help you
- We investigate all quality concerns to ensure our products perform to the highest standards

If the product does not perform as described on this datasheet, we will offer a refund or replacement. For full details of the Abpromise, please visit <http://www.abcam.cn/abpromise> or contact our technical team.

Terms and conditions

- Guarantee only valid for products bought direct from Abcam or one of our authorized distributors