

Product datasheet

Anti-RFX5 antibody ab116513

1 图像

概述

产品名称	Anti-RFX5抗体
描述	兔多克隆抗体to RFX5
经测试应用	适用于: WB
种属反应性	与反应: Human
免疫原	Synthetic peptide conjugated to KLH, corresponding to a region within internal sequence amino acids 236-266 of Human RFX5 (NP_001020774.1, NP_000440.1).
阳性对照	293 cell line lysate.

性能

形式	Liquid
存放说明	Shipped at 4°C. Store at 4°C (up to 6 months). Store at -20°C long term.
存储溶液	Preservative: 0.09% Sodium azide Constituent: 99% PBS
纯度	Immunogen affinity purified
纯化说明	ab116513 is purified through a protein A column, followed by peptide affinity purification.
克隆	多克隆
同种型	IgG

应用

Our [Abpromise guarantee](#) covers the use of **ab116513** in the following tested applications.

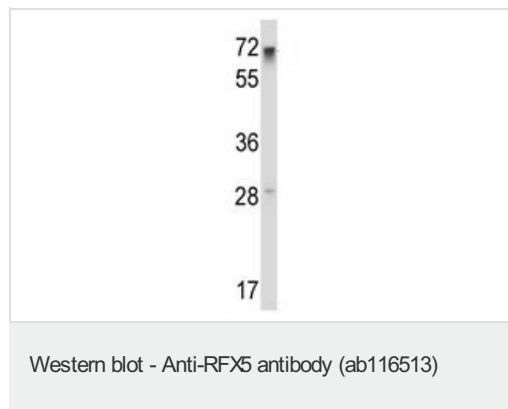
The application notes include recommended starting dilutions; optimal dilutions/concentrations should be determined by the end user.

应用	Ab评论	说明
WB		1/100 - 1/500. Predicted molecular weight: 65 kDa.

靶标

功能	Activates transcription from class II MHC promoters. Recognizes X-boxes. Mediates cooperative binding between RFX and NF-Y. RFX binds the X1 box of MHC-II promoters.
组织特异性	Ubiquitous.
疾病相关	Defects in RFX5 are a cause of bare lymphocyte syndrome type 2 (BLS2) [MIM:209920]; also known as hereditary MHC class II deficiency or HLA class II-deficient combined immunodeficiency. BLS2 is a severe combined immunodeficiency disease with early onset. It is characterized by a profound defect in constitutive and interferon-gamma induced MHC II expression, absence of cellular and humoral T-cell response to antigen challenge, hypogammaglobulinemia and impaired antibody production. The consequence include extreme susceptibility to viral, bacterial and fungal infections.
序列相似性	Belongs to the RFX family. Contains 1 RFX-type winged-helix DNA-binding domain.
结构域	The N-terminus is required for dimer formation, association with RFXANK and RFXAP, assembly of the RFX complex, and for binding of this complex to its X box target site in the MHC-II promoter. The C-terminus mediates cooperative binding between the RFX complex and NF-Y.
翻译后修饰	Phosphorylated.
细胞定位	Nucleus.

图片



Anti-RFX5 antibody (ab116513) at 1/100 dilution + 293 cell line lysate at 35 µg

Predicted band size : 65 kDa

Please note: All products are "FOR RESEARCH USE ONLY AND ARE NOT INTENDED FOR DIAGNOSTIC OR THERAPEUTIC USE"

Our Abpromise to you: Quality guaranteed and expert technical support

- Replacement or refund for products not performing as stated on the datasheet
- Valid for 12 months from date of delivery
- Response to your inquiry within 24 hours
- We provide support in Chinese, English, French, German, Japanese and Spanish
- Extensive multi-media technical resources to help you
- We investigate all quality concerns to ensure our products perform to the highest standards

If the product does not perform as described on this datasheet, we will offer a refund or replacement. For full details of the Abpromise, please visit <http://www.abcam.cn/abpromise> or contact our technical team.

Terms and conditions

- Guarantee only valid for products bought direct from Abcam or one of our authorized distributors