

Product datasheet

Anti-PTF1A antibody ab116298

1 图像

概述

产品名称	Anti-PTF1A抗体
描述	兔多克隆抗体to PTF1A
宿主	Rabbit
经测试应用	适用于: WB
种属反应性	与反应: Human
免疫原	Synthetic peptide corresponding to Human PTF1A aa 287-316 (C terminal) conjugated to keyhole limpet haemocyanin. Database link: Q7RTS3
阳性对照	K562 cell line lysates.

性能

形式	Liquid
存放说明	Shipped at 4°C. Store at 4°C (up to 6 months). Store at -20°C long term.
存储溶液	Preservative: 0.09% Sodium azide Constituent: 99% PBS
纯度	Immunogen affinity purified
纯化说明	ab116298 is purified through a protein A column, followed by peptide affinity purification.
克隆	多克隆
同种型	IgG

应用

Our [Abpromise guarantee](#) covers the use of **ab116298** in the following tested applications.

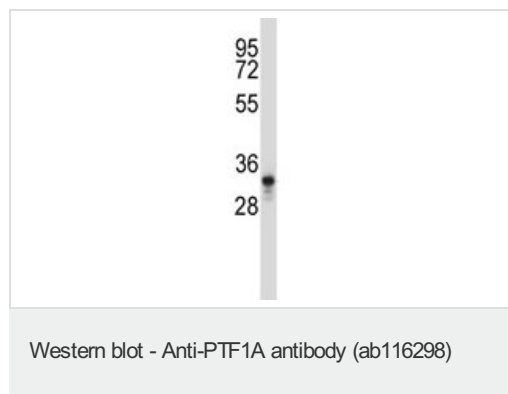
The application notes include recommended starting dilutions; optimal dilutions/concentrations should be determined by the end user.

应用	Ab评论	说明
WB		1/1000. Predicted molecular weight: 35 kDa.

靶标

功能	Transcriptional activator. Binds to the E-box consensus sequence 5'-CANNTG-3'. Plays an important role in determining whether cells allocated to the pancreatic buds continue towards pancreatic organogenesis or revert back to duodenal fates. May be involved in the maintenance of exocrine pancreas-specific gene expression including ELA1 and amylase. Required for the formation of pancreatic acinar and ductal cells (By similarity). Plays an important role in cerebellar development.
组织特异性	Pancreas-specific (at protein level). Loss of expression is seen in ductal type pancreas cancers.
疾病相关	Defects in PTF1A are the cause of diabetes mellitus and cerebellar hypoplasia/agenesis (DMCH) [MIM:609069].
序列相似性	Contains 1 basic helix-loop-helix (bHLH) domain.
细胞定位	Nucleus. Cytoplasm. In chronic pancreatitis associated with pancreas cancer preferentially accumulates in the cytoplasm of acinar/ductular complexes. In the cytoplasm loses its ability to form the PTF1 complex.
形式	PTF1A is a pancreas specific transcription factor. Mammalian studies have implicated important roles for the basic helix-loop-helix transcription factor PTF1A-p48 in the development of both exocrine and endocrine pancreas.

图片



Anti-PTF1A antibody (ab116298) at 1/100 dilution + K562 cell line lysates at 35 µg

Predicted band size: 35 kDa

Please note: All products are "FOR RESEARCH USE ONLY AND ARE NOT INTENDED FOR DIAGNOSTIC OR THERAPEUTIC USE"

Our Abpromise to you: Quality guaranteed and expert technical support

- Replacement or refund for products not performing as stated on the datasheet
- Valid for 12 months from date of delivery
- Response to your inquiry within 24 hours
- We provide support in Chinese, English, French, German, Japanese and Spanish
- Extensive multi-media technical resources to help you
- We investigate all quality concerns to ensure our products perform to the highest standards

If the product does not perform as described on this datasheet, we will offer a refund or replacement. For full details of the Abpromise, please visit <http://www.abcam.cn/abpromise> or contact our technical team.

Terms and conditions

- Guarantee only valid for products bought direct from Abcam or one of our authorized distributors