

Product datasheet

Anti-RPL8 antibody ab116239

3 图像

概述

产品名称	Anti-RPL8抗体
描述	山羊多克隆抗体to RPL8
宿主	Goat
经测试应用	适用于: WB, ELISA, IHC-P
种属反应性	与反应: Human 预测可用于: Mouse, Rat, Cow, Dog, Zebrafish
免疫原	Synthetic peptide: KAGRAYHKYKAKRNC , corresponding to internal sequence amino acids 181-194 of Human RPL8. Run BLAST with Run BLAST with
阳性对照	IHC-P: Human brain (cortex) and spleen tissues WB: HepG2 cell lysate

性能

形式	Liquid
存放说明	Shipped at 4°C. Upon delivery aliquot and store at -20°C. Avoid repeated freeze / thaw cycles.
存储溶液	pH: 7.30 Preservative: 0.02% Sodium azide Constituents: 99% Tris buffered saline, 0.5% BSA
纯度	Immunogen affinity purified
克隆	多克隆
同种型	IgG

应用

Our [Abpromise guarantee](#) covers the use of **ab116239** in the following tested applications.

The application notes include recommended starting dilutions; optimal dilutions/concentrations should be determined by the end user.

应用	Ab评论	说明
WB		Use a concentration of 0.01 - 0.03 µg/ml. Predicted molecular weight: 28 kDa.
ELISA		1/128000.
IHC-P		Use a concentration of 2.5 µg/ml. Perform heat mediated antigen retrieval with citrate buffer pH 6 before commencing with IHC staining protocol.

靶标

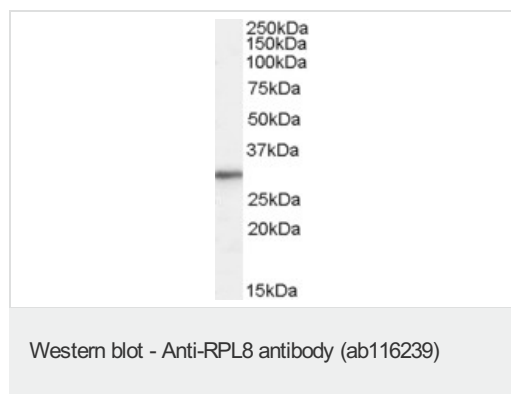
序列相似性

Belongs to the ribosomal protein L2P family.

细胞定位

Cytoplasm.

图片

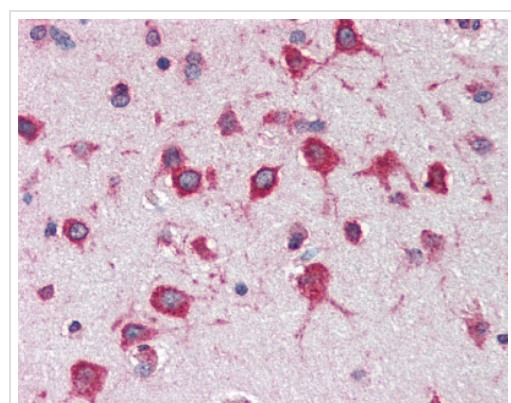


Anti-RPL8 antibody (ab116239) at 0.01 µg/ml
+ HepG2 cell lysate (in RIPA buffer) at 35 µg

Developed using the ECL technique.

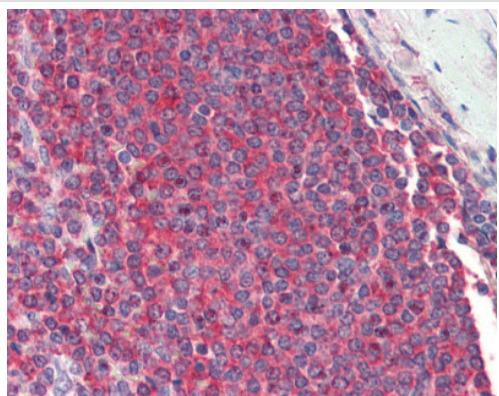
Predicted band size: 28 kDa

Exposure time: 1 hour



Immunohistochemistry (Formalin/PFA-fixed paraffin-embedded sections) - Anti-RPL8 antibody (ab116239)

ab116239, at 2.5 µg/ml, staining RPL8 in formalin fixed, paraffin embedded Human brain (cortex) tissue by Immunohistochemistry. After incubation with the primary antibody, slides were incubated with biotinylated anti-goat IgG secondary antibody, followed by alkaline phosphatase-streptavidin and chromogen.



Immunohistochemistry (Formalin/PFA-fixed paraffin-embedded sections) - Anti-RPL8 antibody (ab116239)

ab116239, at 2.5 $\mu\text{g/ml}$, staining RPL8 in formalin fixed, paraffin embedded Human spleen tissue by Immunohistochemistry. After incubation with the primary antibody, slides were incubated with biotinylated anti-goat IgG secondary antibody, followed by alkaline phosphatase-streptavidin and chromogen.

Please note: All products are "FOR RESEARCH USE ONLY AND ARE NOT INTENDED FOR DIAGNOSTIC OR THERAPEUTIC USE"

Our Abpromise to you: Quality guaranteed and expert technical support

- Replacement or refund for products not performing as stated on the datasheet
- Valid for 12 months from date of delivery
- Response to your inquiry within 24 hours
- We provide support in Chinese, English, French, German, Japanese and Spanish
- Extensive multi-media technical resources to help you
- We investigate all quality concerns to ensure our products perform to the highest standards

If the product does not perform as described on this datasheet, we will offer a refund or replacement. For full details of the Abpromise, please visit <http://www.abcam.cn/abpromise> or contact our technical team.

Terms and conditions

- Guarantee only valid for products bought direct from Abcam or one of our authorized distributors