

## Product datasheet

# Anti-Protein phosphatase 1 inhibitor subunit 2 antibody ab116047

### 1 图像

#### 概述

<b>产品名称</b>	Anti-Protein phosphatase 1 inhibitor subunit 2抗体
<b>描述</b>	兔多克隆抗体to Protein phosphatase 1 inhibitor subunit 2
<b>经测试应用</b>	<b>适用于:</b> WB
<b>种属反应性</b>	<b>与反应:</b> Human <b>预测可用于:</b> Mouse, Rat, Rabbit, Horse, Guinea pig, Cow, Cat, Dog
<b>免疫原</b>	Synthetic peptide corresponding to a region within N terminal amino acids 27-76 ( ASAEQPRGNVDEELSKKSQKWDEMNILATYHPADKDYGLMKIDEPSTPYH ) of Human Protein phosphatase 1 inhibitor subunit 2 (NP_006232). <a href="#">Run BLAST with</a> <a href="#">Run BLAST with</a>
<b>阳性对照</b>	THP-1 cell lysate.

#### 性能

<b>形式</b>	Liquid
<b>存放说明</b>	Shipped at 4°C. Upon delivery aliquot and store at -20°C. Avoid repeated freeze / thaw cycles.
<b>存储溶液</b>	Constituents: 2% Sucrose, 97% PBS
<b>纯度</b>	Immunogen affinity purified
<b>克隆</b>	多克隆
<b>同种型</b>	IgG

#### 应用

Our [Abpromise guarantee](#) covers the use of **ab116047** in the following tested applications.

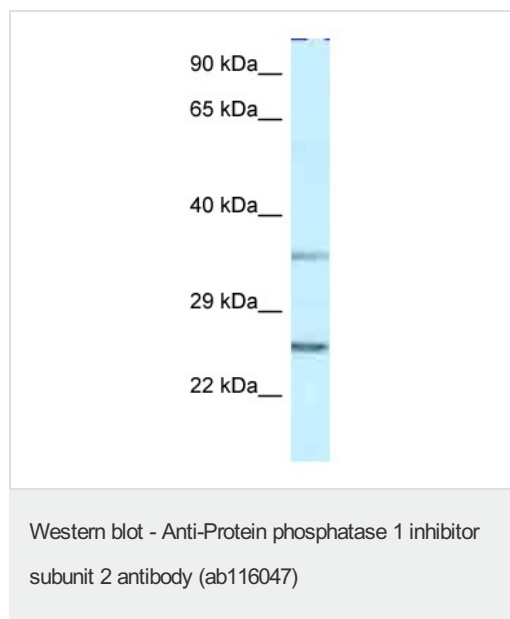
The application notes include recommended starting dilutions; optimal dilutions/concentrations should be determined by the end user.

应用	Ab评论	说明
WB		Use a concentration of 1 µg/ml. Predicted molecular weight: 23 kDa. Good results were obtained when blocked with 5% non-fat dry milk in 0.05% PBS-T.

## 靶标

功能	Inhibitor of protein-phosphatase 1.
序列相似性	Belongs to the protein phosphatase inhibitor 2 family.
翻译后修饰	Phosphorylation on Thr-73 by GSK3 activates PP1 by dissociating the PP1-PPP1R2 complex (By similarity). Phosphorylation on Ser-44 by ATM activates PP1 by dissociating the PP1-PPP1R2 complex.

## 图片



Anti-Protein phosphatase 1 inhibitor subunit 2 antibody (ab116047) at 1 µg/ml + THP-1 cell lysate at 10 µg

**Predicted band size : 23 kDa**

**Please note:** All products are "FOR RESEARCH USE ONLY AND ARE NOT INTENDED FOR DIAGNOSTIC OR THERAPEUTIC USE"

## Our Abpromise to you: Quality guaranteed and expert technical support

- Replacement or refund for products not performing as stated on the datasheet
- Valid for 12 months from date of delivery
- Response to your inquiry within 24 hours
- We provide support in Chinese, English, French, German, Japanese and Spanish
- Extensive multi-media technical resources to help you
- We investigate all quality concerns to ensure our products perform to the highest standards

If the product does not perform as described on this datasheet, we will offer a refund or replacement. For full details of the Abpromise, please visit <http://www.abcam.cn/abpromise> or contact our technical team.

## Terms and conditions

- Guarantee only valid for products bought direct from Abcam or one of our authorized distributors