


Product datasheet

Anti-CD3 antibody ab113628

1 图像

概述

产品名称	Anti-CD3抗体
描述	兔多克隆抗体to CD3
宿主	Rabbit
经测试应用	适用于: WB, IP, ELISA, IHC-P
种属反应性	与反应: Mouse, Human 预测可用于: Rat 
免疫原	Synthetic peptide (the amino acid sequence is considered to be commercially sensitive).
阳性对照	Human tonsil tissue.

性能

形式	Liquid
存放说明	Shipped at 4°C. Upon delivery aliquot and store at -80°C. Avoid freeze / thaw cycles.
存储溶液	pH: 7.20 Constituent: 99% PBS
纯度	Immunogen affinity purified
纯化说明	ab113628 purified by Epitope affinity purification.
克隆	多克隆
同种型	IgG

应用

Our [Abpromise guarantee](#) covers the use of **ab113628** in the following tested applications.

The application notes include recommended starting dilutions; optimal dilutions/concentrations should be determined by the end user.

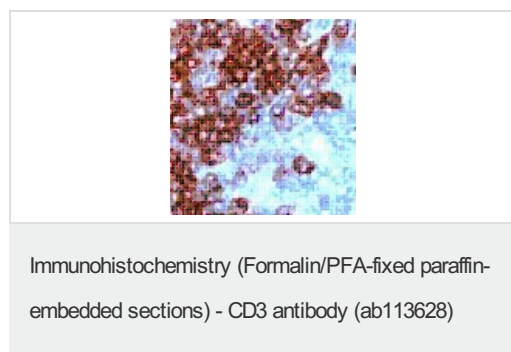
应用	Ab评论	说明
WB		Use a concentration of 0.1 - 1 µg/ml. Predicted molecular weight: 23 kDa.
IP		Use a concentration of 2 - 5 µg/ml.

应用	Ab评论	说明
ELISA		Use a concentration of 0.01 - 0.1 µg/ml.
IHC-P		Use a concentration of 2 - 5 µg/ml. Perform heat mediated antigen retrieval with citrate buffer pH 6 before commencing with IHC staining protocol.

## 靶标

<b>功能</b>	The CD3 complex mediates signal transduction.
<b>疾病相关</b>	Defects in CD3D are a cause of severe combined immunodeficiency autosomal recessive T-cell-negative/B-cell-positive/NK-cell-positive (T(-)/B(+)/NK(+)) SCID [MIM:608971]. A form of severe combined immunodeficiency (SCID), a genetically and clinically heterogeneous group of rare congenital disorders characterized by impairment of both humoral and cell-mediated immunity, leukopenia, and low or absent antibody levels. Patients present in infancy recurrent, persistent infections by opportunistic organisms. The common characteristic of all types of SCID is absence of T-cell-mediated cellular immunity due to a defect in T-cell development.
<b>序列相似性</b>	Contains 1 ITAM domain.
<b>细胞定位</b>	Membrane.

## 图片



ab113628 at 1/100 dilution staining CD3 in Formalin-fixed, Paraffin-embedded Human tonsil tissue by Immunohistochemistry.

**Please note:** All products are "FOR RESEARCH USE ONLY AND ARE NOT INTENDED FOR DIAGNOSTIC OR THERAPEUTIC USE"

## Our Abpromise to you: Quality guaranteed and expert technical support

- Replacement or refund for products not performing as stated on the datasheet
- Valid for 12 months from date of delivery
- Response to your inquiry within 24 hours
- We provide support in Chinese, English, French, German, Japanese and Spanish
- Extensive multi-media technical resources to help you
- We investigate all quality concerns to ensure our products perform to the highest standards

If the product does not perform as described on this datasheet, we will offer a refund or replacement. For full details of the Abpromise,

please visit <http://www.abcam.cn/abpromise> or contact our technical team.

## Terms and conditions

---

- Guarantee only valid for products bought direct from Abcam or one of our authorized distributors