


Product datasheet

Anti-MARK2 antibody ab113267

1 图像

概述

产品名称	Anti-MARK2抗体
描述	兔多克隆抗体to MARK2
宿主	Rabbit
经测试应用	适用于: WB, IP
种属反应性	与反应: Human 预测可用于: Mouse, Rat, Rabbit, Horse, Guinea pig, Cow, Dog, Ferret, Rhesus monkey, Gorilla, Orangutan 
免疫原	Synthetic peptide corresponding to a region between amino acids 300 and 350 of Human MARK2 (NP_001034558.2).
阳性对照	293T cell lysate

性能

形式	Liquid
存放说明	Shipped at 4°C. Upon delivery aliquot and store at -20°C. Avoid freeze / thaw cycles.
存储溶液	pH: 7.50 Preservative: 0.09% Sodium azide Constituent: 99% Tris citrate/phosphate
纯度	Immunogen affinity purified
纯化说明	ab113267 was affinity purified using an epitope specific to MARK2 immobilized on solid support.
克隆	多克隆
同种型	IgG

应用

Our [Abpromise guarantee](#) covers the use of **ab113267** in the following tested applications.

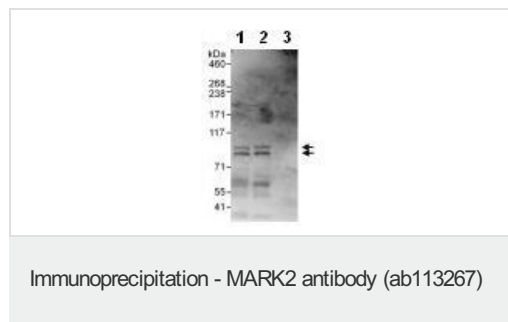
The application notes include recommended starting dilutions; optimal dilutions/concentrations should be determined by the end user.

应用	Ab评论	说明
WB		1/2000 - 1/10000. Predicted molecular weight: 88 kDa.
IP		Use at 2-10 µg/mg of lysate.

靶标

功能	Role in epithelial morphogenesis. Modulates the developmental decision to build a columnar versus a hepatic epithelial cell apparently by promoting a switch from a direct to a transcytotic mode of apical protein delivery. Essential for the asymmetric development of membrane domains of polarized epithelial cells. One or more isoforms may play a role in graft rejection.
组织特异性	High levels of expression in heart, brain, skeletal muscle and pancreas, lower levels observed in lung, liver and kidney.
序列相似性	Belongs to the protein kinase superfamily. CAMK Ser/Thr protein kinase family. MARK subfamily. Contains 1 KA1 (kinase-associated) domain. Contains 1 protein kinase domain. Contains 1 UBA domain.
细胞定位	Cell membrane. Phosphorylated by PRKCZ in polarized epithelial cells, resulting in an interaction with YWHAZ which promotes relocation from the lateral to the apical membrane.

图片



1 mg whole cell lysate from 293T cells was immunoprecipitated using

Lane 1: ab113267 at 6 µg/mg lysate
Lane 2: a Rabbit anti-MARK2 antibody that recognizes a downstream epitope
Lane 3: a control IgG.

20% of immunoprecipitates was loaded on the gel.

For WB of immunoprecipitated MARK2, ab113267 was used at 1 µg/ml.

Detection: Chemiluminescence with an exposure time of 30 seconds.

Please note: All products are "FOR RESEARCH USE ONLY AND ARE NOT INTENDED FOR DIAGNOSTIC OR THERAPEUTIC USE"

Our Abpromise to you: Quality guaranteed and expert technical support

- Replacement or refund for products not performing as stated on the datasheet
- Valid for 12 months from date of delivery

- Response to your inquiry within 24 hours
- We provide support in Chinese, English, French, German, Japanese and Spanish
- Extensive multi-media technical resources to help you
- We investigate all quality concerns to ensure our products perform to the highest standards

If the product does not perform as described on this datasheet, we will offer a refund or replacement. For full details of the Abpromise, please visit <http://www.abcam.cn/abpromise> or contact our technical team.

Terms and conditions

- Guarantee only valid for products bought direct from Abcam or one of our authorized distributors