


Product datasheet

Anti-CAD (phospho T456) antibody ab111837

1 图像

概述

产品名称	Anti-CAD (phospho T456)抗体
描述	兔多克隆抗体to CAD (phospho T456)
宿主	Rabbit
特异性	ab111837 detects endogenous levels of CAD only when phosphorylated at threonine 456.
经测试应用	适用于: IHC-P
种属反应性	与反应: Human 预测可用于: Mouse 
免疫原	Synthetic phosphopeptide derived from Human CAD around the phosphorylation site of threonine 456 (P-I-T <sup>P</sup> -P-H).
阳性对照	Human colon carcinoma tissue.

性能

形式	Liquid
存放说明	Shipped at 4°C. Store at -20°C. Stable for 12 months at -20°C.
存储溶液	pH: 7.40 Preservative: 0.02% Sodium azide Constituents: 49.1% PBS, 50% Glycerol, 0.88% Sodium chloride
纯度	Immunogen affinity purified
纯化说明	ab111837 was affinity-purified from Rabbit antiserum by affinity-chromatography using epitope-specific phosphopeptide. The antibody against non-phosphopeptide was removed by chromatography using non-phosphopeptide corresponding to the phosphorylation site.
克隆	多克隆
同种型	IgG

应用

Our [Abpromise guarantee](#) covers the use of **ab111837** in the following tested applications.

The application notes include recommended starting dilutions; optimal dilutions/concentrations should be determined by the end user.

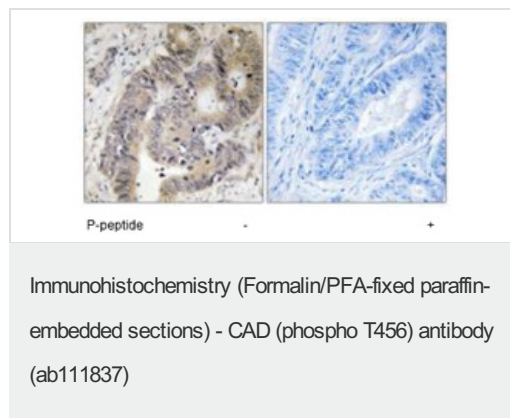
应用	Ab评论	说明
IHC-P		1/50 - 1/100. Perform heat mediated antigen retrieval with citrate buffer pH 6 before commencing with IHC staining protocol.

## 靶标

**相关性** Carbamoyl phosphate synthetase-aspartate carbamoyltransferase-dihydroorotase (CAD) is a multifunctional protein that initiates and regulates mammalian de novo pyrimidine biosynthesis. This trifunctional protein which is associated with the enzymatic activities of the first 3 enzymes in the 6-step pathway of pyrimidine biosynthesis is the rate-limiting step in the de novo pyrimidine synthetic pathway. Although most of the CAD protein in the cell is cytosolic, phosphorylation at threonine 456 localizes the protein to the nucleus. While MAPK and EGF phosphorylate CAD at threonine 456, MAPK and c-myc have been found to induce over-expression of CAD.

**细胞定位** Cytoplasmic and Nuclear

## 图片



ab111837 at 1/50 dilution staining CAD in paraffin-embedded Human Colon carcinoma tissue by Immunohistochemistry. The image on the right is treated with the synthesized phosphopeptide.

**Please note:** All products are "FOR RESEARCH USE ONLY AND ARE NOT INTENDED FOR DIAGNOSTIC OR THERAPEUTIC USE"

## Our Abpromise to you: Quality guaranteed and expert technical support

- Replacement or refund for products not performing as stated on the datasheet
- Valid for 12 months from date of delivery
- Response to your inquiry within 24 hours
- We provide support in Chinese, English, French, German, Japanese and Spanish
- Extensive multi-media technical resources to help you
- We investigate all quality concerns to ensure our products perform to the highest standards

If the product does not perform as described on this datasheet, we will offer a refund or replacement. For full details of the Abpromise, please visit <http://www.abcam.cn/abpromise> or contact our technical team.

## Terms and conditions

---

- Guarantee only valid for products bought direct from Abcam or one of our authorized distributors