


Product datasheet

Anti-STAT2 (phospho Y631) antibody ab111609

1 图像

概述

产品名称	Anti-STAT2 (phospho Y631)抗体
描述	兔多克隆抗体to STAT2 (phospho Y631)
特异性	ab111609 detects endogenous levels of STAT2 only when phosphorylated at tyrosine 631.
经测试应用	适用于: IHC-P
种属反应性	与反应: Human 预测可用于: Mouse, Rat 
免疫原	Synthetic phosphopeptide derived from Human STAT2 around the phosphorylation site of tyrosine 631 (Q-P-Y <sup>P</sup> -T-K).
阳性对照	Human colon carcinoma tissue.

性能

形式	Liquid
存放说明	Shipped at 4°C. Store at -20°C. Stable for 12 months at -20°C.
存储溶液	pH: 7.40 Preservative: 0.02% Sodium azide Constituents: PBS, 50% Glycerol, 0.88% Sodium chloride Note: PBS (without Mg <sup>2+</sup> and Ca <sup>2+</sup> )
纯度	Immunogen affinity purified
纯化说明	ab111609 was affinity-purified from rabbit antiserum by affinity-chromatography using epitope-specific phosphopeptide. The antibody against non-phosphopeptide was removed by chromatography using non-phosphopeptide corresponding to the phosphorylation site.
克隆	多克隆
同种型	IgG

应用

Our [Abpromise guarantee](#) covers the use of **ab111609** in the following tested applications.

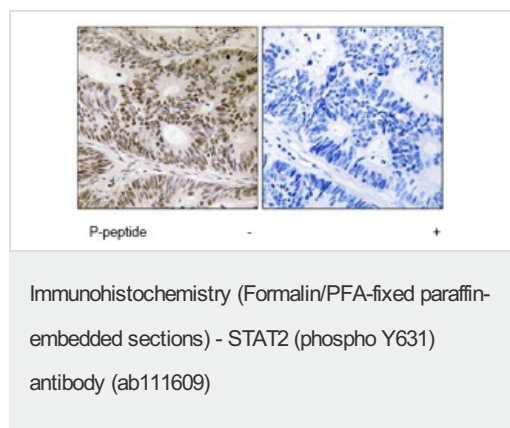
The application notes include recommended starting dilutions; optimal dilutions/concentrations should be determined by the end user.

应用	Ab评论	说明
IHC-P		1/50 - 1/100. Perform heat mediated antigen retrieval with citrate buffer pH 6 before commencing with IHC staining protocol.

## 靶标

<b>功能</b>	Signal transducer and activator of transcription that mediates signaling by type I IFNs (IFN-alpha and IFN-beta). Following type I IFN binding to cell surface receptors, Jak kinases (TYK2 and JAK1) are activated, leading to tyrosine phosphorylation of STAT1 and STAT2. The phosphorylated STATs dimerize, associate with ISGF3G/IRF-9 to form a complex termed ISGF3 transcription factor, that enters the nucleus. ISGF3 binds to the IFN stimulated response element (ISRE) to activate the transcription of interferon stimulated genes, which drive the cell in an antiviral state.
<b>序列相似性</b>	Belongs to the transcription factor STAT family. Contains 1 SH2 domain.
<b>翻译后修饰</b>	Tyrosine phosphorylated in response to IFN-alpha.
<b>细胞定位</b>	Cytoplasm. Nucleus. Translocated into the nucleus upon activation by IFN-alpha/beta.

## 图片



ab111609 at 1/50 dilution staining STAT2 in paraffin-embedded Human Colon carcinoma tissue by Immunohistochemistry. The image on the right is treated with the synthesized phosphopeptide.

**Please note:** All products are "FOR RESEARCH USE ONLY AND ARE NOT INTENDED FOR DIAGNOSTIC OR THERAPEUTIC USE"

## Our Abpromise to you: Quality guaranteed and expert technical support

- Replacement or refund for products not performing as stated on the datasheet
- Valid for 12 months from date of delivery
- Response to your inquiry within 24 hours
- We provide support in Chinese, English, French, German, Japanese and Spanish
- Extensive multi-media technical resources to help you
- We investigate all quality concerns to ensure our products perform to the highest standards

If the product does not perform as described on this datasheet, we will offer a refund or replacement. For full details of the Abpromise, please visit <http://www.abcam.cn/abpromise> or contact our technical team.

## Terms and conditions

---

- Guarantee only valid for products bought direct from Abcam or one of our authorized distributors