


Product datasheet

Anti-ATF2 (phospho S490) antibody ab111482

1 图像

概述

产品名称	Anti-ATF2 (phospho S490)抗体
描述	兔多克隆抗体to ATF2 (phospho S490)
宿主	Rabbit
特异性	ab111482 detects endogenous levels of ATF2 only when phosphorylated at serine 472.
经测试应用	适用于: IHC-P
种属反应性	与反应: Human 预测可用于: Mouse, Rat 
免疫原	Synthetic phosphopeptide derived from Human ATF2 around the phosphorylation site of serine 490 (A-L-S ^P -Q-I).
阳性对照	Human brain tissue

性能

形式	Liquid
存放说明	Shipped at 4°C. Store at -20°C. Stable for 12 months at -20°C.
存储溶液	pH: 7.40 Preservative: 0.02% Sodium azide Constituents: 50% Glycerol, 49% PBS, 0.88% Sodium chloride
纯度	Immunogen affinity purified
纯化说明	ab111482 was affinity-purified from rabbit antiserum by affinity-chromatography using epitope-specific phosphopeptide. The antibody against non-phosphopeptide was removed by chromatography using non-phosphopeptide corresponding to the phosphorylation site.
克隆	多克隆
同种型	IgG

应用

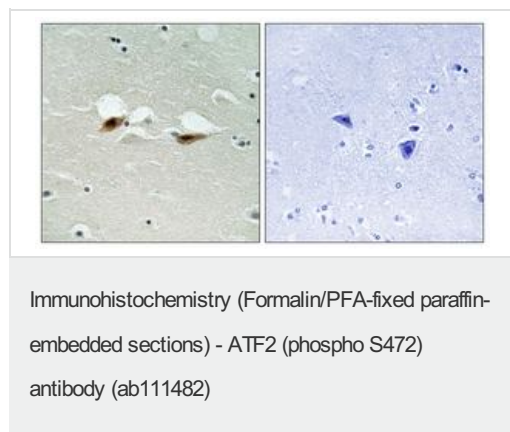
Our [Abpromise guarantee](#) covers the use of **ab111482** in the following tested applications.
The application notes include recommended starting dilutions; optimal dilutions/concentrations should be determined by the end user.

应用	Ab评论	说明
IHC-P		1/50 - 1/100. Perform heat mediated antigen retrieval with citrate buffer pH 6 before commencing with IHC staining protocol.

靶标

功能	Transcriptional activator, probably constitutive, which binds to the cAMP-responsive element (CRE) (consensus: 5'-GTGACGT[AC][AG]-3'), a sequence present in many viral and cellular promoters. Interaction with JUN redirects JUN to bind to CRE preferentially over the 12-O-tetradecanoylphorbol-13-acetate response elements (TRES) as part of an ATF2/JUN complex.
组织特异性	Abundant expression seen in the brain.
序列相似性	Belongs to the bZIP family. ATF subfamily. Contains 1 bZIP domain. Contains 1 C2H2-type zinc finger.
翻译后修饰	Phosphorylation of Thr-69 and Thr-71 by MAPK14 causes increased transcriptional activity. Also phosphorylated and activated by JNK.
细胞定位	Nucleus.

图片



ab111482, at 1/50 dilution, staining ATF2 in paraffin-embedded Human brain tissue by Immunohistochemistry, in the presence (right panel) or absence (left panel) of immunising peptide.

Please note: All products are "FOR RESEARCH USE ONLY AND ARE NOT INTENDED FOR DIAGNOSTIC OR THERAPEUTIC USE"

Our Abpromise to you: Quality guaranteed and expert technical support

- Replacement or refund for products not performing as stated on the datasheet
- Valid for 12 months from date of delivery
- Response to your inquiry within 24 hours
- We provide support in Chinese, English, French, German, Japanese and Spanish
- Extensive multi-media technical resources to help you
- We investigate all quality concerns to ensure our products perform to the highest standards

If the product does not perform as described on this datasheet, we will offer a refund or replacement. For full details of the Abpromise, please visit <http://www.abcam.cn/abpromise> or contact our technical team.

Terms and conditions

- Guarantee only valid for products bought direct from Abcam or one of our authorized distributors