

Product datasheet

Anti-Nephrocystin 4 antibody ab111408

1 图像

概述

产品名称	Anti-Nephrocystin 4抗体
描述	兔多克隆抗体to Nephrocystin 4
经测试应用	适用于: IHC-P
种属反应性	与反应: Human
免疫原	Synthetic peptide derived from an internal sequence from the Human Nephrocystin 4 protein (O75161).
阳性对照	human colon carcinoma tissue.

性能

形式	Liquid
存放说明	Shipped at 4°C. Store at -20°C. Stable for 12 months at -20°C.
存储溶液	pH: 7.40 Preservative: 0.02% Sodium azide Constituents: PBS, 50% Glycerol, 0.88% Sodium chloride Note: PBS without calcium and magnesium
纯度	Immunogen affinity purified
克隆	多克隆
同种型	IgG

应用

Our [Abpromise guarantee](#) covers the use of **ab111408** in the following tested applications.

The application notes include recommended starting dilutions; optimal dilutions/concentrations should be determined by the end user.

应用	Ab评论	说明
IHC-P		1/50 - 1/100. Perform heat mediated antigen retrieval with citrate buffer pH 6 before commencing with IHC staining protocol.

靶标

组织特异性

Expressed in kidney, skeletal muscle, heart and liver, and to a lesser extent in brain and lung.

疾病相关

Defects in NPHP4 are the cause of nephronophthisis type 4 (NPHP4) [MIM:606966]; also known as familial juvenile nephronophthisis 4. NPHP4 is an autosomal recessive inherited disease resulting in end-stage renal disease at age ranging between 6 and 35 years. It is a progressive tubulo-interstitial kidney disorder characterized by polydipsia, polyuria, anemia and growth retardation. The most prominent histological features are modifications of the tubules with thickening of the basement membrane, interstitial fibrosis and, in the advanced stages, medullary cysts.

Defects in NPHP4 are the cause of Senior-Loken syndrome type 4 (SLSN4) [MIM:606996]. SLSN is a renal-retinal disorder characterized by progressive wasting of the filtering unit of the kidney, with or without medullary cystic renal disease, and progressive eye disease. Typically this disorder becomes apparent during the first year of life.

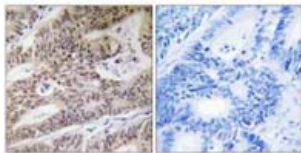
序列相似性

Belongs to the NPHP4 family.

细胞定位

Cytoplasm > cytoskeleton > cilium basal body. Cytoplasm > cytoskeleton > centrosome.

图片



Immunohistochemistry (Formalin/PFA-fixed paraffin-embedded sections) - Nephrocystin 4 antibody (ab111408)

Immunohistochemistry analysis of paraffin-embedded human colon carcinoma tissue using anti Nephrocystin 4 antibody (ab111408). The picture on the right is treated with the synthesized peptide.

Please note: All products are "FOR RESEARCH USE ONLY AND ARE NOT INTENDED FOR DIAGNOSTIC OR THERAPEUTIC USE"

Our Abpromise to you: Quality guaranteed and expert technical support

- Replacement or refund for products not performing as stated on the datasheet
- Valid for 12 months from date of delivery
- Response to your inquiry within 24 hours
- We provide support in Chinese, English, French, German, Japanese and Spanish
- Extensive multi-media technical resources to help you
- We investigate all quality concerns to ensure our products perform to the highest standards

If the product does not perform as described on this datasheet, we will offer a refund or replacement. For full details of the Abpromise, please visit <http://www.abcam.cn/abpromise> or contact our technical team.

Terms and conditions

- Guarantee only valid for products bought direct from Abcam or one of our authorized distributors