

Product datasheet

Anti-KIF13B antibody ab111159

1 图像

概述

产品名称	Anti-KIF13B抗体
描述	兔多克隆抗体to KIF13B
经测试应用	适用于: IHC-P
种属反应性	与反应: Human
免疫原	Synthetic peptide: S YTMGTAD QP GLIPRLC SGL FERTQK EENE EQSFK VEVSYMEIY NEKVRD, corresponding to amino acids 110-160 of Human KIF13B Run BLAST with ExPASy Run BLAST with NCBI
阳性对照	Human brain tissue.

性能

形式	Liquid
存放说明	Shipped at 4°C. Store at -20°C. Stable for 12 months at -20°C.
存储溶液	pH: 7.40 Preservative: 0.02% Sodium azide Constituents: 49.1% PBS, 50% Glycerol, 0.88% Sodium chloride Note: PBS (without Mg ²⁺ and Ca ²⁺)
纯度	Immunogen affinity purified
纯化说明	ab111159 was affinity-purified from Rabbit antiserum by affinity-chromatography using epitope-specific immunogen.
克隆	多克隆
同种型	IgG

应用

Our [Abpromise guarantee](#) covers the use of **ab111159** in the following tested applications.

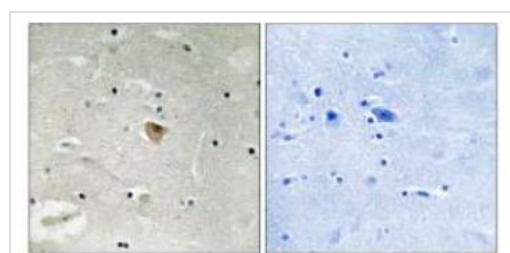
The application notes include recommended starting dilutions; optimal dilutions/concentrations should be determined by the end user.

应用	Ab评论	说明
IHC-P		1/50 - 1/100. Perform heat mediated antigen retrieval with citrate buffer pH 6 before commencing with IHC staining protocol.

靶标

功能	May be involved in reorganization of the cortical cytoskeleton. May be functionally important for the intracellular trafficking of MAGUKs and associated protein complexes.
组织特异性	Ubiquitous.
序列相似性	Belongs to the kinesin-like protein family. Contains 1 CAP-Gly domain. Contains 1 FHA domain. Contains 1 kinesin-motor domain.
翻译后修饰	Phosphorylated upon DNA damage, probably by ATM or ATR.
细胞定位	Cytoplasm > cytoskeleton.

图片



ab111159 at 1/50 dilution staining KIF13B in paraffin-embedded Human brain tissue by Immunohistochemistry. The image on the right is treated with synthesized peptide.

Immunohistochemistry (Formalin/PFA-fixed paraffin-embedded sections) - KIF13B antibody (ab111159)

Please note: All products are "FOR RESEARCH USE ONLY AND ARE NOT INTENDED FOR DIAGNOSTIC OR THERAPEUTIC USE"

Our Abpromise to you: Quality guaranteed and expert technical support

- Replacement or refund for products not performing as stated on the datasheet
- Valid for 12 months from date of delivery
- Response to your inquiry within 24 hours
- We provide support in Chinese, English, French, German, Japanese and Spanish
- Extensive multi-media technical resources to help you
- We investigate all quality concerns to ensure our products perform to the highest standards

If the product does not perform as described on this datasheet, we will offer a refund or replacement. For full details of the Abpromise, please visit <http://www.abcam.cn/abpromise> or contact our technical team.

Terms and conditions

- Guarantee only valid for products bought direct from Abcam or one of our authorized distributors