

Product datasheet

Anti-GJA3 antibody ab110894

1 图像

概述

|       |  |
|-------|--|
| 产品名称  | Anti-GJA3抗体  |
| 描述    | 兔多克隆抗体to GJA3  |
| 宿主    | Rabbit   |
| 经测试应用 | 适用于: IHC-P   |
| 种属反应性 | 与反应: Human   |
| 免疫原   | Synthetic peptide derived from an internal sequence of Human GJA3. |
| 阳性对照  | Human lung carcinoma tissue  |

性能

|      |  |
|------|--|
| 形式   | Liquid   |
| 存放说明 | Shipped at 4°C. Store at -20°C. Stable for 12 months at -20°C.   |
| 存储溶液 | pH: 7.40<br>Preservative: 0.02% Sodium azide<br>Constituents: PBS, 0.88% Sodium chloride, 50% Glycerol<br>Note: PBS (without Mg <sup>2+</sup> and Ca <sup>2+</sup> ) |
| 纯度   | Immunogen affinity purified  |
| 纯化说明 | ab110894 was affinity-purified from rabbit antiserum by affinity-chromatography using epitope-specific immunogen.  |
| 克隆   | 多克隆  |
| 同种型  | IgG  |

应用

Our [Abpromise guarantee](#) covers the use of **ab110894** in the following tested applications.

The application notes include recommended starting dilutions; optimal dilutions/concentrations should be determined by the end user.

| 应用    | Ab评论 | 说明   |
|-------|------|--|
| IHC-P |      | 1/50 - 1/100. Perform heat mediated antigen retrieval with citrate buffer pH 6 before commencing with IHC staining protocol. |

## 靶标

### 功能

One gap junction consists of a cluster of closely packed pairs of transmembrane channels, the connexons, through which materials of low MW diffuse from one cell to a neighboring cell.

### 疾病相关

Defects in GJA3 are the cause of cataract zonular pulverulent cataract type 3 (CZP3) [MIM:601885]. A form of zonular cataract. Zonular or lamellar cataracts are opacities, broad or narrow, usually consisting of powdery white dots affecting only certain layers or zones between the cortex and nucleus of an otherwise clear lens. The opacity may be so dense as to render the entire central region of the lens completely opaque, or so translucent that vision is hardly if at all impeded. Zonular cataracts generally do not involve the embryonic nucleus, though sometimes they involve the fetal nucleus. Usually sharply separated from a clear cortex outside them, they may have projections from their outer edges known as riders or spokes.

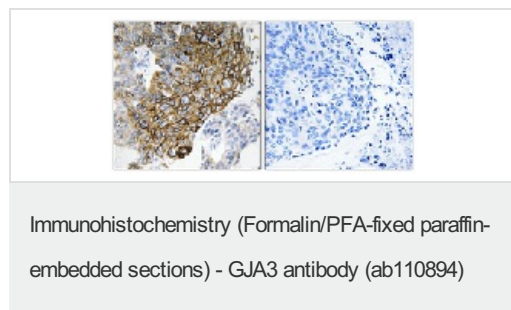
### 序列相似性

Belongs to the connexin family. Alpha-type (group II) subfamily.

### 细胞定位

Cell membrane. Cell junction > gap junction.

## 图片



ab110894, at a 1/50 dilution, staining GJA3 in paraffin-embedded Human Lung carcinoma tissue by Immunohistochemistry. The image on the right is treated with the synthesized peptide.

**Please note:** All products are "FOR RESEARCH USE ONLY AND ARE NOT INTENDED FOR DIAGNOSTIC OR THERAPEUTIC USE"

## Our Abpromise to you: Quality guaranteed and expert technical support

- Replacement or refund for products not performing as stated on the datasheet
- Valid for 12 months from date of delivery
- Response to your inquiry within 24 hours
- We provide support in Chinese, English, French, German, Japanese and Spanish
- Extensive multi-media technical resources to help you
- We investigate all quality concerns to ensure our products perform to the highest standards

If the product does not perform as described on this datasheet, we will offer a refund or replacement. For full details of the Abpromise, please visit <http://www.abcam.cn/abpromise> or contact our technical team.

## Terms and conditions

---

- Guarantee only valid for products bought direct from Abcam or one of our authorized distributors