

Product datasheet

Anti-ABCC12 antibody ab110087

1 图像

概述

产品名称	Anti-ABCC12抗体
描述	兔多克隆抗体to ABCC12
宿主	Rabbit
经测试应用	适用于: WB
种属反应性	与反应: Human
免疫原	Synthetic peptide derived from internal sequence of Human ABCC12.
阳性对照	Extracts from HUVEC, 293 and HepG2 cells

性能

形式	Liquid
存放说明	Shipped at 4°C. Store at -20°C. Stable for 12 months at -20°C.
存储溶液	pH: 7.40 Preservative: 0.02% Sodium azide Constituents: PBS, 0.88% Sodium chloride, 50% Glycerol
纯度	Immunogen affinity purified
纯化说明	ab110087 was affinity purified from rabbit antiserum by affinity chromatography using epitope specific immunogen.
克隆	多克隆
同种型	IgG

应用

Our [Abpromise guarantee](#) covers the use of **ab110087** in the following tested applications.

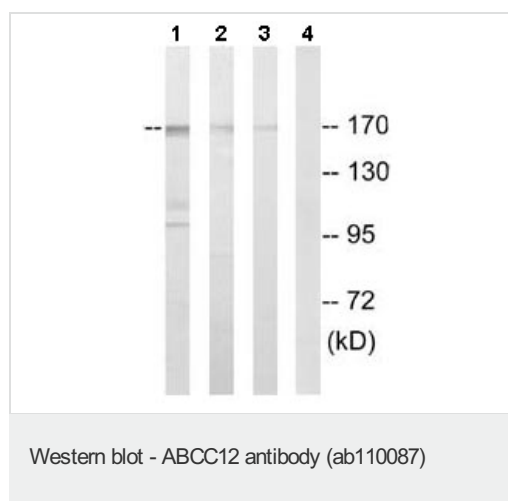
The application notes include recommended starting dilutions; optimal dilutions/concentrations should be determined by the end user.

应用	Ab评论	说明
WB		1/500 - 1/1000. Detects a band of approximately 152 kDa (predicted molecular weight: 152 kDa).

## 靶标

功能	Probable transporter.
组织特异性	Expressed in testis (at protein level). Widely expressed at low level. Isoform 5 is specifically expressed in brain, testis and breast cancer cells.
序列相似性	Belongs to the ABC transporter superfamily. ABCC family. Conjugate transporter (TC 3.A.1.208) subfamily. Contains 2 ABC transmembrane type-1 domains. Contains 2 ABC transporter domains.
发展阶段	Expressed in fetal tissues.
细胞定位	Membrane.

## 图片



**All lanes :** Anti-ABCC12 antibody (ab110087) at 1/500 dilution

**Lane 1 :** Extracts from HUVEC cells

**Lane 2 :** Extracts from HepG2 cells

**Lane 3 :** Extracts from 293 cells

**Lane 4 :** Extracts from 293 cells with immunizing peptide at 10 µg

Lysates/proteins at 30 µg per lane.

**Predicted band size:** 152 kDa

**Observed band size:** 152 kDa

**Please note:** All products are "FOR RESEARCH USE ONLY AND ARE NOT INTENDED FOR DIAGNOSTIC OR THERAPEUTIC USE"

## Our Abpromise to you: Quality guaranteed and expert technical support

- Replacement or refund for products not performing as stated on the datasheet
- Valid for 12 months from date of delivery
- Response to your inquiry within 24 hours
- We provide support in Chinese, English, French, German, Japanese and Spanish
- Extensive multi-media technical resources to help you
- We investigate all quality concerns to ensure our products perform to the highest standards

If the product does not perform as described on this datasheet, we will offer a refund or replacement. For full details of the Abpromise, please visit <http://www.abcam.cn/abpromise> or contact our technical team.

## Terms and conditions

---

- Guarantee only valid for products bought direct from Abcam or one of our authorized distributors