


Product datasheet

Anti-MRPL24 antibody ab109982

2 图像

概述

产品名称	Anti-MRPL24抗体
描述	兔多克隆抗体to MRPL24
经测试应用	适用于: WB, IHC-P
种属反应性	与反应: Human 预测可用于: Mouse, Rat 
免疫原	Synthetic peptide derived from an internal region of Human MRPL24.
阳性对照	HUVEC cell extract; Human breast carcinoma tissue.

性能

形式	Liquid
存放说明	Shipped at 4°C. Store at -20°C. Stable for 12 months at -20°C.
存储溶液	pH: 7.40 Preservative: 0.02% Sodium azide Constituents: PBS, 50% Glycerol, 0.88% Sodium chloride Note: PBS (without Mg ²⁺ and Ca ²⁺)
纯度	Immunogen affinity purified
纯化说明	ab109982 was affinity-purified from rabbit antiserum by affinity-chromatography using epitope-specific immunogen.
克隆	多克隆
同种型	IgG

应用

Our [Abpromise guarantee](#) covers the use of **ab109982** in the following tested applications.

The application notes include recommended starting dilutions; optimal dilutions/concentrations should be determined by the end user.

应用	Ab评论	说明
WB		1/500 - 1/1000. Predicted molecular weight: 25 kDa.

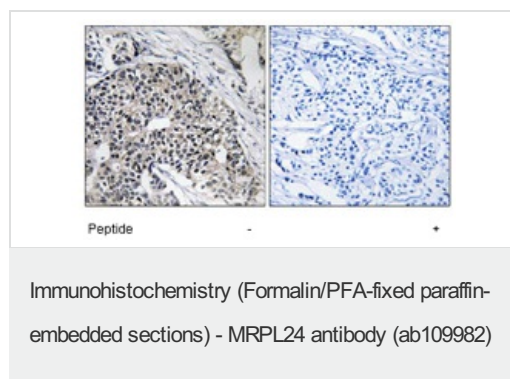
应用	Ab评论	说明
IHC-P		1/50 - 1/100. Perform heat mediated antigen retrieval with citrate buffer pH 6 before commencing with IHC staining protocol.

靶标

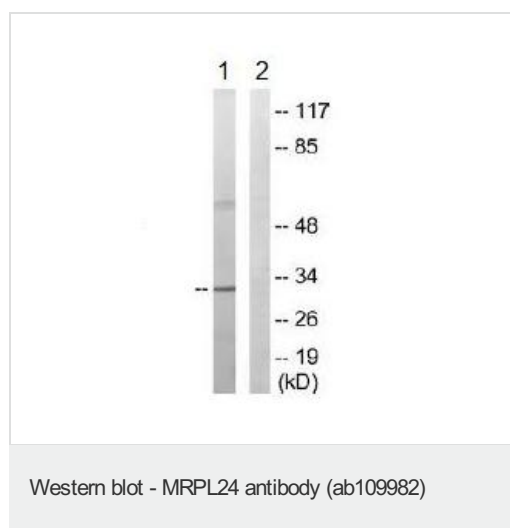
相关性 MRPL24 is a mitochondrial ribosomal protein (MRP). Mammalian mitochondrial ribosomal proteins are encoded by nuclear genes and help in protein synthesis within the mitochondrion. Mitochondrial ribosomes (mitoribosomes) consist of a small 28S subunit and a large 39S subunit. This is a 39S subunit protein.

细胞定位 Mitochondrial

图片



ab109982 at 1/50 dilution staining MRPL24 in paraffin-embedded Human breast carcinoma tissue by Immunohistochemistry. The image on the right is treated with the synthesized peptide.



All lanes : Anti-MRPL24 antibody (ab109982) at 1/500 dilution

Lane 1 : HUVEC cell extract

Lane 2 : HUVEC cell extract with immunizing peptide at 10 µg

Lysates/proteins at 30 µg per lane.

Predicted band size : 25 kDa

Please note: All products are "FOR RESEARCH USE ONLY AND ARE NOT INTENDED FOR DIAGNOSTIC OR THERAPEUTIC USE"

Our Abpromise to you: Quality guaranteed and expert technical support

- Replacement or refund for products not performing as stated on the datasheet
- Valid for 12 months from date of delivery
- Response to your inquiry within 24 hours

- We provide support in Chinese, English, French, German, Japanese and Spanish
- Extensive multi-media technical resources to help you
- We investigate all quality concerns to ensure our products perform to the highest standards

If the product does not perform as described on this datasheet, we will offer a refund or replacement. For full details of the Abpromise, please visit <http://www.abcam.cn/abpromise> or contact our technical team.

Terms and conditions

- Guarantee only valid for products bought direct from Abcam or one of our authorized distributors