

## Product datasheet

### Anti-AKT1/2 antibody ab109870

#### 4 图像

#### 概述

产品名称	Anti-AKT1/2抗体
描述	兔多克隆抗体to AKT1/2
宿主	Rabbit
经测试应用	适用于: WB, IP, IHC-P
种属反应性	与反应: Mouse, Rat, Human
免疫原	Synthetic peptide (Human) conjugated to KLH
阳性对照	WB: mouse or Rat brain lysate; HeLa or Hs-67 cell lysate. IHC-P: heart, prostate or thymus tissue.

#### 性能

形式	Liquid
存放说明	Shipped at 4°C. Store at -20°C.
存储溶液	Preservative: 0.09% Sodium Azide Constituents: 50% Glycerol, PBS
纯度	Protein A purified
克隆	多克隆
同种型	IgG

#### 应用

Our [Abpromise guarantee](#) covers the use of **ab109870** in the following tested applications.

The application notes include recommended starting dilutions; optimal dilutions/concentrations should be determined by the end user.

应用	Ab评论	说明
WB		1/1000. Predicted molecular weight: 56 kDa.
IP		Use at an assay dependent concentration.

应用	Ab评论	说明
IHC-P		Use a concentration of 10 µg/ml. Perform heat mediated antigen retrieval with citrate buffer pH 6 before commencing with IHC staining protocol.

## 靶标

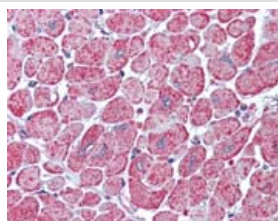
### 相关性

The serine/threonine kinase AKT (protein kinase B or PKB) has a central role in the regulation of several signaling pathways controlling cell proliferation, apoptosis, angiogenesis, and diabetes. In humans, there are three genes in the "AKT family": AKT1, AKT2, and AKT3. AKT1 is catalytically inactive in serum starved primary and immortalized fibroblasts. AKT1 and the related AKT2 are activated by platelet derived growth factor. The activation is rapid and specific. In the developing nervous system AKT is a critical mediator of growth factor induced neuronal survival. Survival factors can suppress apoptosis in a transcription independent manner by activating the serine/threonine kinase AKT1, which then phosphorylates and inactivates components of the apoptotic machinery. AKT2 is a putative oncogene and is a general protein kinase capable of phosphorylating several known proteins. AKT2 is amplified and overexpressed in some human carcinomas. AKT2 acts primarily as a regulator of glucose metabolism.

### 细胞定位

AKT1: Cytoplasm. Nucleus. Cell membrane. Note: Nucleus after activation by integrin-linked protein kinase 1 (ILK1). Nuclear translocation is enhanced by interaction with TCL1A.

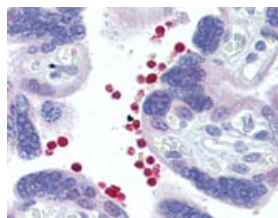
## 图片



Immunohistochemistry (Formalin/PFA-fixed paraffin-embedded sections) - AKT1/2 antibody (ab109870)

ab109870 at 10 µg/ml staining AKT1/2 in formalin-fixed, paraffin-embedded Human heart tissue after heat induced antigen retrieval in pH 6.0 citrate buffer.

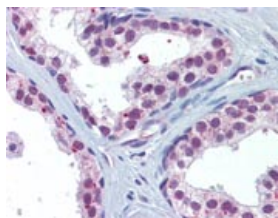
After incubation with the primary antibody, slides were incubated with a biotinylated secondary antibody, followed by alkaline phosphatase-streptavidin and chromogen.



Immunohistochemistry (Formalin/PFA-fixed paraffin-embedded sections) - AKT1/2 antibody (ab109870)

ab109870 at 10 µg/ml staining AKT1/2 in formalin-fixed, paraffin-embedded Human placenta (red blood cells) after heat induced antigen retrieval in pH 6.0 citrate buffer.

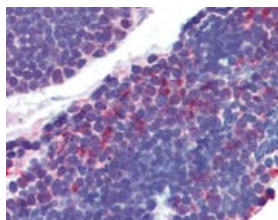
After incubation with the primary antibody, slides were incubated with a biotinylated secondary antibody, followed by alkaline phosphatase-streptavidin and chromogen.



Immunohistochemistry (Formalin/PFA-fixed paraffin-embedded sections) - AKT1/2 antibody (ab109870)

ab109870 at 10 µg/ml staining AKT1/2 in formalin-fixed, paraffin-embedded Human prostate tissue after heat induced antigen retrieval in pH 6.0 citrate buffer.

After incubation with the primary antibody, slides were incubated with a biotinylated secondary antibody, followed by alkaline phosphatase-streptavidin and chromogen.



Immunohistochemistry (Formalin/PFA-fixed paraffin-embedded sections) - AKT1/2 antibody (ab109870)

ab109870 at 10 µg/ml staining AKT1/2 in formalin-fixed, paraffin-embedded Human thymus tissue after heat induced antigen retrieval in pH 6.0 citrate buffer.

After incubation with the primary antibody, slides were incubated with a biotinylated secondary antibody, followed by alkaline phosphatase-streptavidin and chromogen.

**Please note:** All products are "FOR RESEARCH USE ONLY AND ARE NOT INTENDED FOR DIAGNOSTIC OR THERAPEUTIC USE"

### Our Abpromise to you: Quality guaranteed and expert technical support

- Replacement or refund for products not performing as stated on the datasheet
- Valid for 12 months from date of delivery
- Response to your inquiry within 24 hours
- We provide support in Chinese, English, French, German, Japanese and Spanish
- Extensive multi-media technical resources to help you
- We investigate all quality concerns to ensure our products perform to the highest standards

If the product does not perform as described on this datasheet, we will offer a refund or replacement. For full details of the Abpromise, please visit <http://www.abcam.cn/abpromise> or contact our technical team.

### Terms and conditions

- Guarantee only valid for products bought direct from Abcam or one of our authorized distributors