

Product datasheet

Anti-EFHB antibody ab107174

1 图像

概述

产品名称	Anti-EFHB抗体
描述	兔多克隆抗体to EFHB
宿主	Rabbit
经测试应用	适用于: WB
种属反应性	与反应: Human
免疫原	KLH conjugated synthetic peptide corresponding to a region within N terminal amino acids 1-30 of Human EFHB (NP_653316.3).
阳性对照	MCF-7 cell line lysate

性能

形式	Liquid
存放说明	Shipped at 4°C. Store at 4°C (up to 6 months). Store at -20°C long term.
存储溶液	Preservative: 0.09% Sodium Azide Constituents: PBS
纯度	Immunogen affinity purified
纯化说明	ab107174 is purified through a protein A column, followed by peptide affinity purification.
克隆	多克隆
同种型	IgG

应用

Our [Abpromise guarantee](#) covers the use of **ab107174** in the following tested applications. The application notes include recommended starting dilutions; optimal dilutions/concentrations should be determined by the end user.

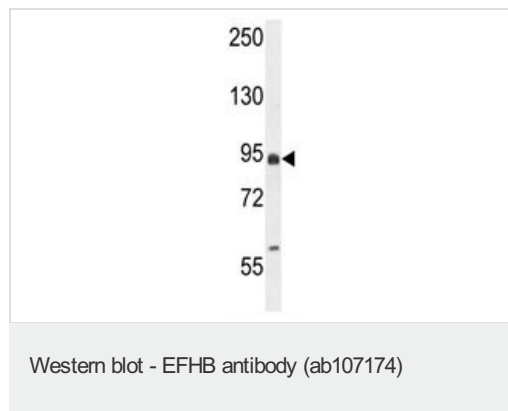
应用	Ab评论	说明
WB		1/100 - 1/500. Predicted molecular weight: 94 kDa.

靶标

## 序列相似性

Contains 2 EF-hand domains.

## 图片



Anti-EFHB antibody (ab107174) at 1/100 dilution + MCF-7 cell line lysate at 35  $\mu$ g

**Predicted band size:** 94 kDa

**Please note:** All products are "FOR RESEARCH USE ONLY AND ARE NOT INTENDED FOR DIAGNOSTIC OR THERAPEUTIC USE"

## Our Abpromise to you: Quality guaranteed and expert technical support

- Replacement or refund for products not performing as stated on the datasheet
- Valid for 12 months from date of delivery
- Response to your inquiry within 24 hours
- We provide support in Chinese, English, French, German, Japanese and Spanish
- Extensive multi-media technical resources to help you
- We investigate all quality concerns to ensure our products perform to the highest standards

If the product does not perform as described on this datasheet, we will offer a refund or replacement. For full details of the Abpromise, please visit <http://www.abcam.cn/abpromise> or contact our technical team.

## Terms and conditions

- Guarantee only valid for products bought direct from Abcam or one of our authorized distributors