

## Product datasheet

# Anti-ARL8B antibody ab105792

### 1 图像

#### 概述

产品名称	Anti-ARL8B抗体
描述	兔多克隆抗体to ARL8B
经测试应用	适用于: WB
种属反应性	与反应: Human 预测可用于: Mouse, Rat, Sheep, Rabbit, Horse, Chicken, Guinea pig, Cow, Cat, Dog, Pig, Zebrafish
免疫原	Synthetic peptide corresponding to a region within internal sequence amino acids 71-120 (DIGGQPRFRS MWERYCRGVN AIVYMIDAAD REKIEASRNE LHNLLDKPQL) of Human ARL8B (NP_060654). <a href="#">Run BLAST with ExPASy</a> <a href="#">Run BLAST with NCBI</a>
阳性对照	COLO205 cell lysate.

#### 性能

形式	Liquid
存放说明	Shipped at 4°C. Upon delivery aliquot and store at -20°C. Avoid repeated freeze / thaw cycles.
存储溶液	Preservative: None Constituents: 2% Sucrose, PBS
纯度	Immunogen affinity purified
克隆	多克隆
同种型	IgG

#### 应用

Our [Abpromise guarantee](#) covers the use of **ab105792** in the following tested applications.

The application notes include recommended starting dilutions; optimal dilutions/concentrations should be determined by the end user.

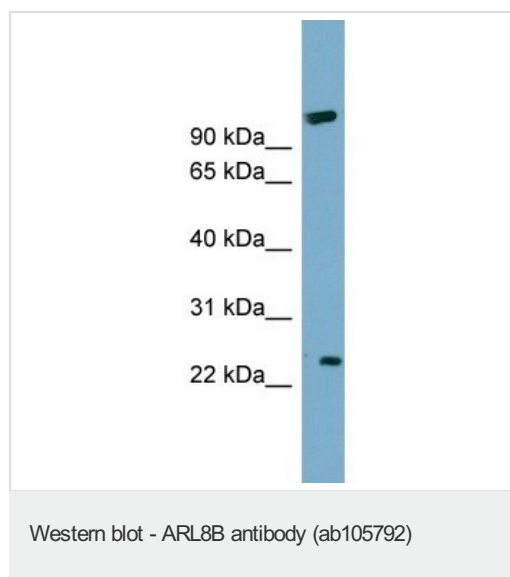
应用	Ab评论	说明
----	------	----

应用	Ab评论	说明
WB		Use a concentration of 1 µg/ml. Predicted molecular weight: 22 kDa. Good results were obtained when blocked with 5% non-fat dry milk in 0.05% PBS-T.

## 靶标

功能	May play a role in lysosome motility (PubMed:16537643). May play a role in chromosome segregation (PubMed:15331635).
组织特异性	Ubiquitously expressed.
序列相似性	Belongs to the small GTPase superfamily. Arf family.
细胞定位	Late endosome membrane. Lysosome membrane. Cytoplasm > cytoskeleton > spindle. According to PubMed:15331635, it localizes with microtubules at the spindle mid-zone during mitosis.

## 图片



Anti-ARL8B antibody (ab105792) at 1 µg/ml +  
COLO205 cell lysate at 10 µg

**Predicted band size : 22 kDa**

**Please note:** All products are "FOR RESEARCH USE ONLY AND ARE NOT INTENDED FOR DIAGNOSTIC OR THERAPEUTIC USE"

## Our Abpromise to you: Quality guaranteed and expert technical support

- Replacement or refund for products not performing as stated on the datasheet
- Valid for 12 months from date of delivery
- Response to your inquiry within 24 hours
- We provide support in Chinese, English, French, German, Japanese and Spanish
- Extensive multi-media technical resources to help you
- We investigate all quality concerns to ensure our products perform to the highest standards

If the product does not perform as described on this datasheet, we will offer a refund or replacement. For full details of the Abpromise, please visit <http://www.abcam.cn/abpromise> or contact our technical team.

## **Terms and conditions**

---

- Guarantee only valid for products bought direct from Abcam or one of our authorized distributors