


Product datasheet

Anti-RanGAP1 antibody ab105201

1 图像

概述

产品名称	Anti-RanGAP1抗体
描述	兔多克隆抗体to RanGAP1
宿主	Rabbit
经测试应用	适用于: IHC-P
种属反应性	与反应: Human 预测可用于: Chimpanzee, Orangutan 
免疫原	Synthetic peptide, corresponding to a region between amino acids 400-450 of Human RanGAP1 (NP_002874.1).
阳性对照	Human Breast Carcinoma, Human Colon Carcinoma, Human Ovarian Carcinoma, Human Prostate Carcinoma, Human Testicular Seminoma

性能

形式	Liquid
存放说明	Shipped at 4°C. Upon delivery aliquot and store at -20°C. Avoid freeze / thaw cycles.
存储溶液	Preservative: 0.09% Sodium Azide Constituents: 0.1% BSA, Tris buffered saline
纯度	Immunogen affinity purified
克隆	多克隆
同种型	IgG

应用

Our [Abpromise guarantee](#) covers the use of **ab105201** in the following tested applications.

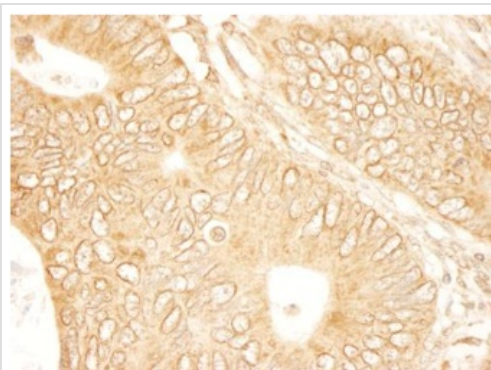
The application notes include recommended starting dilutions; optimal dilutions/concentrations should be determined by the end user.

应用	Ab评论	说明
IHC-P		1/100 - 1/500. Epitope exposure with citrate buffer or tris-EDTA pH9.0 buffer will enhance staining.

靶标

功能	GTPase activator for the nuclear Ras-related regulatory protein Ran, converting it to the putatively inactive GDP-bound state.
组织特异性	Highly expressed in brain, thymus and testis.
序列相似性	Belongs to the RNA1 family. Contains 6 LRR (leucine-rich) repeats.
翻译后修饰	Phosphorylated occurs before nuclear envelope breakdown and continues throughout mitosis. Phosphorylated by the M-phase kinase cyclin B/Cdk1, in vitro. Differential timing of dephosphorylation occurs during phases of mitosis. The phosphorylated form remains associated with RANBP2/NUP358 and the SUMO E2-conjugating enzyme, UBC9, on nuclear pore complex (NPC) disassembly and during mitosis. Sumoylated with SUMO1. Sumoylation is necessary for targeting to the nuclear envelope (NE), and for association with mitotic spindles and kinetochores during mitosis. Also required for interaction with RANBP2 and is mediated by UBC9.
细胞定位	Cytoplasm. Nucleus membrane. Chromosome, centromere, kinetochore. Cytoplasm, cytoskeleton, spindle pole. Cytoplasmic during interphase. Targeted to the nuclear rim after sumoylation. During mitosis, associates with mitotic spindles. Association with kinetochores appears soon after nuclear envelope breakdown and persists until late anaphase. Mitotic location also requires sumoylation.

图片



Staining of Human RanGAP1 in a Formalin/PFA-fixed paraffin-embedded section of Human Colon Carcinoma using ab105201 at a dilution of 1/250. Detection utilised DAB staining.

Immunohistochemistry (Formalin/PFA-fixed paraffin-embedded sections) - RanGAP1 antibody (ab105201)

Please note: All products are "FOR RESEARCH USE ONLY AND ARE NOT INTENDED FOR DIAGNOSTIC OR THERAPEUTIC USE"

Our Abpromise to you: Quality guaranteed and expert technical support

- Replacement or refund for products not performing as stated on the datasheet
- Valid for 12 months from date of delivery
- Response to your inquiry within 24 hours
- We provide support in Chinese, English, French, German, Japanese and Spanish

- Extensive multi-media technical resources to help you
- We investigate all quality concerns to ensure our products perform to the highest standards

If the product does not perform as described on this datasheet, we will offer a refund or replacement. For full details of the Abpromise, please visit <http://www.abcam.cn/abpromise> or contact our technical team.

Terms and conditions

- Guarantee only valid for products bought direct from Abcam or one of our authorized distributors