

Product datasheet

Anti-Cdc14B antibody ab104415

2 图像

概述

产品名称	Anti-Cdc14B抗体
描述	兔多克隆抗体to Cdc14B
经测试应用	适用于: WB
种属反应性	与反应: Human
免疫原	Full length Human Cdc14B (ENSP00000265659, amino acids 1-471).
阳性对照	Human liver tissue lysate; Cdc14B transfected 293T cell lysate

性能

形式	Liquid
存放说明	Shipped at 4°C. Upon delivery aliquot. Store at -20°C or -80°C. Avoid freeze / thaw cycle.
存储溶液	Preservative: None Constituents: 1X PBS, pH 7.2
纯度	Protein A purified
克隆	多克隆
同种型	IgG

应用

Our [Abpromise guarantee](#) covers the use of **ab104415** in the following tested applications.

The application notes include recommended starting dilutions; optimal dilutions/concentrations should be determined by the end user.

应用	Ab评论	说明
WB		Use a concentration of 1 µg/ml. Predicted molecular weight: Isoform 2, 57 ; Isoform 3, 54 kDa.

靶标

**功能** Dual-specificity phosphatase involved in DNA damage response. Essential regulator of the G2 DNA damage checkpoint: following DNA damage, translocates to the nucleus and

dephosphorylates FZR1/CDH1, a key activator of the anaphase promoting complex/cyclosome (APC/C). Dephosphorylation of FZR1/CDH1 activates the APC/C, leading to the ubiquitination of PLK1, preventing entry into mitosis. Preferentially dephosphorylates proteins modified by proline-directed kinases.

#### 序列相似性

Belongs to the protein-tyrosine phosphatase family. Non-receptor class CDC14 subfamily.

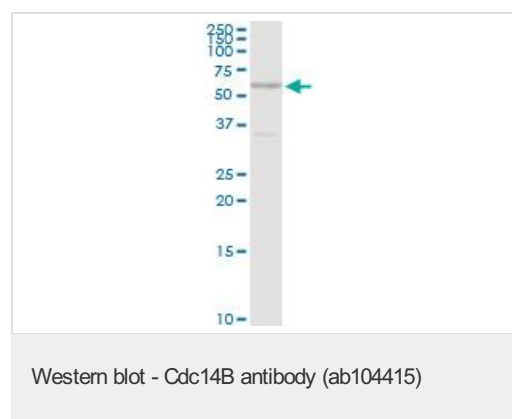
#### 结构域

Composed of two structurally equivalent A and B domains that adopt a dual specificity protein phosphatase (DSP) fold.

#### 细胞定位

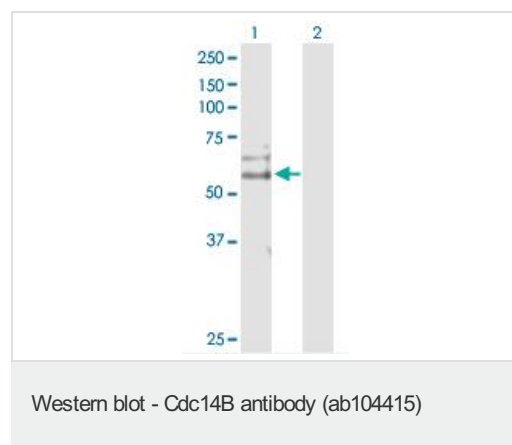
Nucleus > nucleolus. Nucleus > nucleoplasm. Following DNA damage, translocates from the nucleolus to the nucleoplasm and interacts with FZR1/CDH1.

#### 图片



Anti-Cdc14B antibody (ab104415) at 1  $\mu$ g/ml  
+ Human liver tissue lysate at 50  $\mu$ g

**Predicted band size** : Isoform 2, 57 ; Isoform 3, 54 kDa



**All lanes** : Anti-Cdc14B antibody (ab104415)  
at 1  $\mu$ g/ml

**Lane 1** : Cdc14B transfected 293T cell lysate

**Lane 2** : Non-transfected 293T cell lysate

Lysates/proteins at 25  $\mu$ g per lane.

**Predicted band size** : Isoform 2, 57 ; Isoform 3, 54 kDa

**Please note:** All products are "FOR RESEARCH USE ONLY AND ARE NOT INTENDED FOR DIAGNOSTIC OR THERAPEUTIC USE"

#### Our Abpromise to you: Quality guaranteed and expert technical support

- Replacement or refund for products not performing as stated on the datasheet
- Valid for 12 months from date of delivery
- Response to your inquiry within 24 hours
- We provide support in Chinese, English, French, German, Japanese and Spanish
- Extensive multi-media technical resources to help you

- We investigate all quality concerns to ensure our products perform to the highest standards

If the product does not perform as described on this datasheet, we will offer a refund or replacement. For full details of the Abpromise, please visit <http://www.abcam.cn/abpromise> or contact our technical team.

### **Terms and conditions**

---

- Guarantee only valid for products bought direct from Abcam or one of our authorized distributors