

Product datasheet

Anti-SUMF1 antibody ab103467

1 图像

概述

产品名称	Anti-SUMF1抗体
描述	兔多克隆抗体to SUMF1
宿主	Rabbit
经测试应用	适用于: WB
种属反应性	与反应: Human
免疫原	Synthetic peptide conjugated to KLH, corresponding to a region within C terminal amino acids 310 - 399 of Human SUMF1
阳性对照	Hela cell line lysates

性能

形式	Liquid
存放说明	Shipped at 4°C. Store at 4°C (up to 6 months). Store at -20°C long term.
存储溶液	Preservative: 0.09% Sodium Azide Constituents: PBS
纯度	Immunogen affinity purified
纯化说明	ab103467 is purified through a protein A column, followed by peptide affinity purification.
克隆	多克隆
同种型	IgG

应用

Our [Abpromise guarantee](#) covers the use of **ab103467** in the following tested applications.

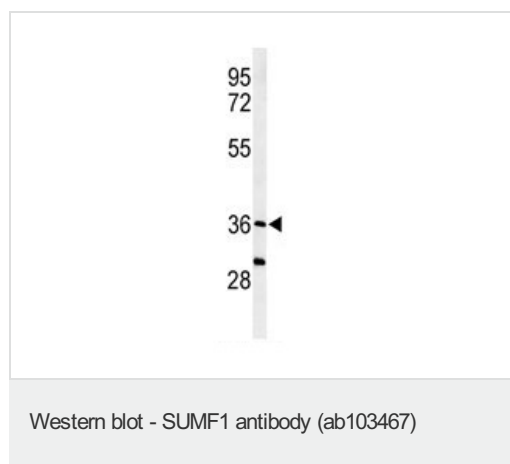
The application notes include recommended starting dilutions; optimal dilutions/concentrations should be determined by the end user.

应用	Ab评论	说明
WB		1/100 - 1/500. Predicted molecular weight: 40 kDa.

靶标

功能	Using molecular oxygen and an unidentified reducing agent, oxidizes a cysteine residue in the substrate sulfatase to an active site 3-oxoalanine residue, which is also called C(alpha)-formylglycine. Known substrates include GALNS, ARSA, STS and ARSE.
组织特异性	Ubiquitous. Highly expressed in kidney, pancreas and liver. Detected at lower levels in leukocytes, lung, placenta, small intestine, skeletal muscle and heart.
通路	Protein modification; sulfatase oxidation.
疾病相关	Defects in SUMF1 are the cause of multiple sulfatase deficiency (MSD) [MIM:272200]. MSD is a clinically and biochemically heterogeneous disorder caused by the simultaneous impairment of all sulfatases, due to defective post-translational modification and activation. It combines features of individual sulfatase deficiencies such as metachromatic leukodystrophy, mucopolysaccharidosis, chondrodysplasia punctata, hydrocephalus, ichthyosis, neurologic deterioration and developmental delay. Inheritance is autosomal recessive.
序列相似性	Belongs to the sulfatase-modifying factor family.
翻译后修饰	N-glycosylated. Contains high-mannose-type oligosaccharides.
细胞定位	Endoplasmic reticulum lumen.

图片



Anti-SUMF1 antibody (ab103467) at 1/100 dilution + HeLa cell line lysates at 35 µg

Predicted band size: 40 kDa

Please note: All products are "FOR RESEARCH USE ONLY AND ARE NOT INTENDED FOR DIAGNOSTIC OR THERAPEUTIC USE"

Our Abpromise to you: Quality guaranteed and expert technical support

- Replacement or refund for products not performing as stated on the datasheet
- Valid for 12 months from date of delivery
- Response to your inquiry within 24 hours
- We provide support in Chinese, English, French, German, Japanese and Spanish
- Extensive multi-media technical resources to help you
- We investigate all quality concerns to ensure our products perform to the highest standards

If the product does not perform as described on this datasheet, we will offer a refund or replacement. For full details of the Abpromise, please visit <http://www.abcam.cn/abpromise> or contact our technical team.

Terms and conditions

- Guarantee only valid for products bought direct from Abcam or one of our authorized distributors