

Product datasheet

Anti-Phospholamban antibody ab103237

2 图像

概述

产品名称	Anti-Phospholamban抗体
描述	兔多克隆抗体to Phospholamban
宿主	Rabbit
经测试应用	适用于: WB, IHC-P
种属反应性	与反应: Mouse, Human
免疫原	Synthetic peptide conjugated to KLH from the S16 region of Human Phospholamban.
阳性对照	Jurkat cell line lysate and Mouse heart tissue

性能

形式	Liquid
存放说明	Shipped at 4°C. Store at 4°C (up to 6 months). Store at -20°C long term.
存储溶液	Preservative: 0.09% Sodium Azide Constituents: PBS
纯度	Immunogen affinity purified
纯化说明	This antibody is purified through a protein G column, eluted with high and low pH buffers and neutralized immediately, followed by dialysis against PBS.
克隆	多克隆
同种型	IgG

应用

Our [Abpromise guarantee](#) covers the use of **ab103237** in the following tested applications.

The application notes include recommended starting dilutions; optimal dilutions/concentrations should be determined by the end user.

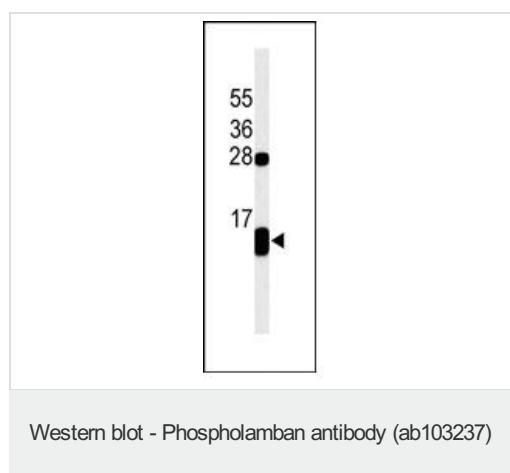
应用	Ab评论	说明
WB		1/100 - 1/500. Predicted molecular weight: 6 kDa.

应用	Ab评论	说明
IHC-P		1/50 - 1/100. Perform heat mediated antigen retrieval with citrate buffer pH 6 before commencing with IHC staining protocol.

靶标

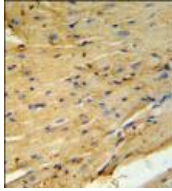
功能	Reversibly inhibits the activity of ATP2A2 in cardiac sarcoplasmic reticulum by decreasing the apparent affinity of the ATPase for Ca(2+). Modulates the contractility of the heart muscle in response to physiological stimuli via its effects on ATP2A2. Modulates calcium re-uptake during muscle relaxation and plays an important role in calcium homeostasis in the heart muscle. The degree of ATP2A2 inhibition depends on the oligomeric state of PLN. ATP2A2 inhibition is alleviated by PLN phosphorylation.
组织特异性	Heart muscle (at protein level).
疾病相关	Cardiomyopathy, dilated 1P Cardiomyopathy, familial hypertrophic 18
序列相似性	Belongs to the phospholamban family.
翻译后修饰	Phosphorylation by PKA abolishes the inhibition of ATP2A2-mediated calcium uptake. Phosphorylated at Thr-17 by CaMK2, and in response to beta-adrenergic stimulation. Phosphorylation by DMPK may stimulate sarcoplasmic reticulum calcium uptake in cardiomyocytes.
细胞定位	Endoplasmic reticulum membrane. Sarcoplasmic reticulum membrane. Mitochondrion membrane. Membrane. Colocalizes with HAX1 at the endoplasmic reticulum (PubMed:17241641). Colocalizes with DMPK a the sarcoplasmic reticulum (PubMed:15598648).

图片



Anti-Phospholamban antibody (ab103237) at 1/100 dilution + Jurkat cell line lysate at 35 µg

Predicted band size: 6 kDa



Immunohistochemistry (Formalin/PFA-fixed paraffin-embedded sections) - Phospholamban antibody (ab103237)

ab103237, at 1/50 dilution, staining Phospholamban in formalin-fixed, paraffin-embedded Mouse heart tissue tissue by Immunohistochemistry followed by peroxidase conjugation of the secondary antibody and DAB detection.

Please note: All products are "FOR RESEARCH USE ONLY AND ARE NOT INTENDED FOR DIAGNOSTIC OR THERAPEUTIC USE"

Our Abpromise to you: Quality guaranteed and expert technical support

- Replacement or refund for products not performing as stated on the datasheet
- Valid for 12 months from date of delivery
- Response to your inquiry within 24 hours
- We provide support in Chinese, English, French, German, Japanese and Spanish
- Extensive multi-media technical resources to help you
- We investigate all quality concerns to ensure our products perform to the highest standards

If the product does not perform as described on this datasheet, we will offer a refund or replacement. For full details of the Abpromise, please visit <http://www.abcam.cn/abpromise> or contact our technical team.

Terms and conditions

- Guarantee only valid for products bought direct from Abcam or one of our authorized distributors