

Product datasheet

Anti-ornithine aminotransferase antibody [AT23A2] ab100845

4 图像

概述

产品名称	Anti-ornithine aminotransferase抗体[AT23A2]
描述	小鼠单克隆抗体[AT23A2] to ornithine aminotransferase
宿主	Mouse
经测试应用	适用于: IHC-P, WB, ELISA, ICC/IF, Flow Cyt
种属反应性	与反应: Mouse, Human
免疫原	Recombinant fragment purified from E. coli, corresponding to amino acids 33-439 of Human ornithine aminotransferase (NP_000265)
阳性对照	HeLa cells and Mouse Liver lysate This antibody gave a positive result in IHC in the following FFPE tissue: Human normal liver.

性能

形式	Liquid
存放说明	Shipped at 4°C. Upon delivery aliquot and store at -20°C. Avoid freeze / thaw cycles.
存储溶液	Preservative: 0.1% Sodium Azide Constituents: PBS, pH 7.4
纯度	Protein G purified
克隆	单克隆
克隆编号	AT23A2
同种型	IgG1
轻链类型	kappa

应用

Our [Abpromise guarantee](#) covers the use of **ab100845** in the following tested applications.

The application notes include recommended starting dilutions; optimal dilutions/concentrations should be determined by the end user.

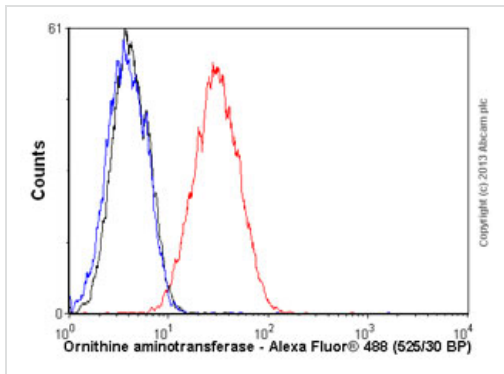
应用	Ab评论	说明
IHC-P		Use a concentration of 5 µg/ml. Perform heat mediated antigen retrieval with citrate buffer pH 6 before commencing with IHC staining protocol.
WB		1/250 - 1/500. Predicted molecular weight: 49 kDa.
ELISA		Use at an assay dependent concentration.
ICC/IF		1/250 - 1/500.
Flow Cyt		Use 1µg for 10 <sup>6</sup> cells. <a href="#">ab170190</a> - Mouse monoclonal IgG1, is suitable for use as an isotype control with this antibody.

## 靶标

**相关性** Ornithine aminotransferase (OAT) is a key mitochondrial enzyme in the pathway that converts arginine and ornithine into the major excitatory and inhibitory neurotransmitters glutamate and GABA. Mutations that result in a deficiency of this enzyme cause the autosomal recessive eye disease Gyrate Atrophy. OAT has also been linked with prostate cancer and alternatively activated macrophages

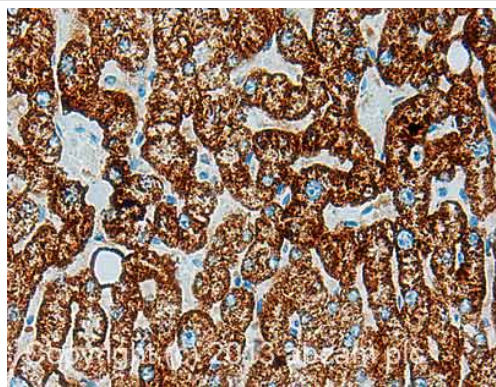
**细胞定位** Mitochondrion matrix.

## 图片



Flow Cytometry - Anti-ornithine aminotransferase antibody [AT23A2] (ab100845)

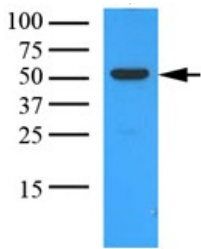
Overlay histogram showing HepG2 cells stained with ab100845 (red line). The cells were fixed with 80% methanol (5 min) and then permeabilized with 0.1% PBS-Tween for 20 min. The cells were then incubated in 1x PBS / 10% normal goat serum / 0.3M glycine to block non-specific protein-protein interactions followed by the antibody (ab100845, 1µg/1x10<sup>6</sup> cells) for 30 min at 22°C. The secondary antibody used was Alexa Fluor® 488 goat anti-mouse IgG (H&L) (ab150113) at 1/2000 dilution for 30 min at 22°C. Isotype control antibody (black line) was mouse IgG1 [ICIGG1] (ab91353, 1µg/1x10<sup>6</sup> cells) used under the same conditions. Unlabelled sample (blue line) was also used as a control. Acquisition of >5,000 events were collected using a 20mW Argon ion laser (488nm) and 525/30 bandpass filter.



Immunohistochemistry (Formalin/PFA-fixed paraffin-embedded sections) - Anti-ornithine aminotransferase antibody [AT23A2] (ab100845)

IHC image of ornithine aminotransferase staining in Human normal liver formalin fixed paraffin embedded tissue section, performed on a Leica Bond™ system using the standard protocol F. The section was pre-treated using heat mediated antigen retrieval with sodium citrate buffer (pH6, epitope retrieval solution 1) for 20 mins. The section was then incubated with ab100845, 5µg/ml, for 15 mins at room temperature and detected using an HRP conjugated compact polymer system. DAB was used as the chromogen. The section was then counterstained with haematoxylin and mounted with DPX.

For other IHC staining systems (automated and non-automated) customers should optimize variable parameters such as antigen retrieval conditions, primary antibody concentration and antibody incubation times.



Western blot - ornithine aminotransferase antibody  
[AT23A2] (ab100845)

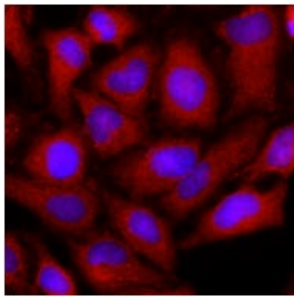
Anti-ornithine aminotransferase antibody  
[AT23A2] (ab100845) at 1/1000 dilution +  
Mouse Liver Tissue Lysate at 35 µg

#### Secondary

goat anti-mouse conjugated to HRP

Developed using the ECL technique.

**Predicted band size:** 49 kDa



Immunocytochemistry/ Immunofluorescence -  
ornithine aminotransferase antibody [AT23A2]  
(ab100845)

Immunofluorescence of Human HeLa cells  
stained with ab100845 (1/500) with Texas  
Red (Red). Nucleus was stained by Hoechst  
33342 (Blue).

**Please note:** All products are "FOR RESEARCH USE ONLY AND ARE NOT INTENDED FOR DIAGNOSTIC OR THERAPEUTIC USE"

#### Our Abpromise to you: Quality guaranteed and expert technical support

- Replacement or refund for products not performing as stated on the datasheet
- Valid for 12 months from date of delivery
- Response to your inquiry within 24 hours
- We provide support in Chinese, English, French, German, Japanese and Spanish
- Extensive multi-media technical resources to help you
- We investigate all quality concerns to ensure our products perform to the highest standards

If the product does not perform as described on this datasheet, we will offer a refund or replacement. For full details of the Abpromise, please visit <http://www.abcam.cn/abpromise> or contact our technical team.

#### Terms and conditions

- Guarantee only valid for products bought direct from Abcam or one of our authorized distributors