


Product datasheet

Anti-XBP1 antibody ab85546

1 Abreviews 1 References 2 图像

概述

产品名称	Anti-XBP1抗体
描述	山羊多克隆抗体to XBP1
宿主	Goat
经测试应用	适用于: WB, ELISA, IHC-P
种属反应性	与反应: Mouse, Dog, Human 预测可用于: Chimpanzee, Gorilla 
免疫原	Synthetic peptide: NHSWEDTFANELFPQ by a Cysteine residue linker, corresponding to C terminal amino acids 358-372 of Human XBP1 isoform 2 Run BLAST with Run BLAST with
阳性对照	Human breast tissue; HeLa nuclear lysate

性能

形式	Liquid
存放说明	Shipped at 4°C. Upon delivery aliquot and store at -20°C. Avoid freeze / thaw cycles.
存储溶液	Preservative: 0.02% Sodium Azide Constituents: 0.5% BSA, Tris buffered saline, pH 7.3
纯度	Immunogen affinity purified
克隆	多克隆
同种型	IgG

应用

Our [Abpromise guarantee](#) covers the use of **ab85546** in the following tested applications.

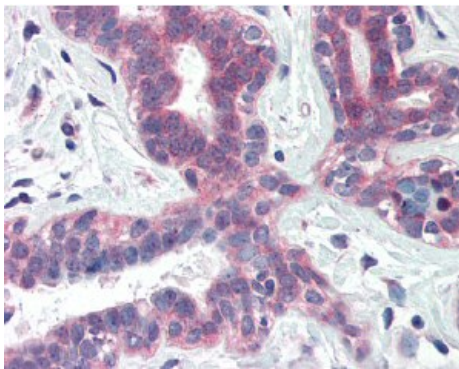
The application notes include recommended starting dilutions; optimal dilutions/concentrations should be determined by the end user.

应用	Ab评论	说明
WB		Use a concentration of 1 - 3 µg/ml. Predicted molecular weight: 40 kDa.
ELISA		1/4000.
IHC-P		Use a concentration of 5 µg/ml.

靶标

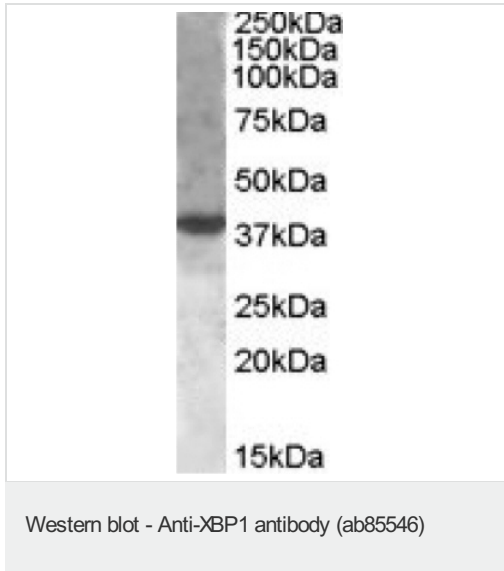
功能	Transcription factor essential for hepatocyte growth, the differentiation of plasma cells, the immunoglobulin secretion, and the unfolded protein response (UPR). Acts during endoplasmic reticulum stress (ER) by activating unfolded protein response (UPR) target genes via direct binding to the UPR element (UPRE). Binds DNA preferably to the CRE-like element 5'-GATGACGTG[<i>TG</i>] _{N(3)} [<i>AT</i>] _{T-3'} , and also to some TPA response elements (TRE). Binds to the HLA DR-alpha promoter. Binds to the Tax-responsive element (TRE) of HTLV-I.
疾病相关	Genetic variations in XBP1 could be associated with susceptibility to major affective disorder type 7 (MAFD7) [MIM:612371]. Major affective disorders represent a class of mental disorders characterized by a disturbance in mood as their predominant feature.
序列相似性	Belongs to the bZIP family. Contains 1 bZIP domain.
细胞定位	Nucleus.

图片



Immunohistochemical analysis of formalin-fixed paraffin-embedded human breast tissue using ab85546 at a dilution of 5µg/ml.

Immunohistochemistry (Formalin/PFA-fixed paraffin-embedded sections) - Anti-XBP1 antibody (ab85546)



Anti-XBP1 antibody (ab85546) at 1 µg/ml +
nuclear HeLa lysate in RIPA buffer at 35 µg

Predicted band size: 40 kDa

Primary incubation was 1 hour. Detected by
chemiluminescence.

Please note: All products are "FOR RESEARCH USE ONLY AND ARE NOT INTENDED FOR DIAGNOSTIC OR THERAPEUTIC USE"

Our Abpromise to you: Quality guaranteed and expert technical support

- Replacement or refund for products not performing as stated on the datasheet
- Valid for 12 months from date of delivery
- Response to your inquiry within 24 hours
- We provide support in Chinese, English, French, German, Japanese and Spanish
- Extensive multi-media technical resources to help you
- We investigate all quality concerns to ensure our products perform to the highest standards

If the product does not perform as described on this datasheet, we will offer a refund or replacement. For full details of the Abpromise, please visit <http://www.abcam.cn/abpromise> or contact our technical team.

Terms and conditions

- Guarantee only valid for products bought direct from Abcam or one of our authorized distributors