

Product datasheet

Anti-WSCD1 antibody ab121491

3 图像

概述

产品名称	Anti-WSCD1抗体
描述	兔多克隆抗体to WSCD1
宿主	Rabbit
经测试应用	适用于: ICC/IF, IHC-P, WB
种属反应性	与反应: Human
免疫原	antigen sequence corresponding to amino acids 257-363 of Human WSCD1.
阳性对照	Human colon tissue; Transfected HEK293T cell WSCD1 over-expression lysate

性能

形式	Liquid
存放说明	Shipped at 4°C. Upon delivery aliquot and store at -20°C. Avoid freeze / thaw cycles.
存储溶液	pH: 7.20 Preservative: 0.02% Sodium azide Constituents: 59% PBS, 40% Glycerol
纯度	Immunogen affinity purified
克隆	多克隆
同种型	IgG

应用

Our [Abpromise guarantee](#) covers the use of **ab121491** in the following tested applications.

The application notes include recommended starting dilutions; optimal dilutions/concentrations should be determined by the end user.

应用	Ab评论	说明
ICC/IF		Use a concentration of 1 - 4 µg/ml. Recommend PFA Fixation and Triton X-100 treatment

应用	Ab评论	说明
IHC-P		1/50 - 1/200. Perform heat mediated antigen retrieval with citrate buffer pH 6 before commencing with IHC staining protocol.
WB		1/250 - 1/500.

## 靶标

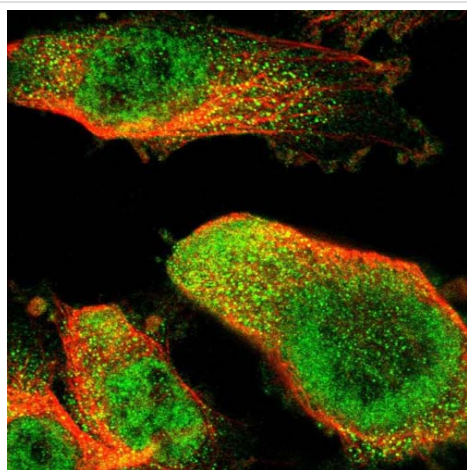
### 序列相似性

Belongs to the WSCD family.  
Contains 2 WSC domains.

### 细胞定位

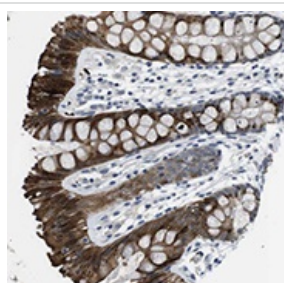
Membrane.

## 图片



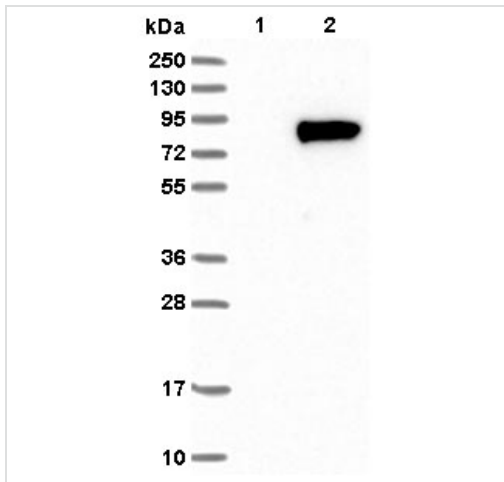
Immunofluorescent staining of Human cell line U-251MG shows positivity in nucleus but not nucleoli and cytoplasm. Recommended concentration of ab121491 1-4  $\mu\text{g/ml}$ . Cells treated with PFA/Triton X-100.

Immunocytochemistry/ Immunofluorescence - Anti-WSCD1 antibody (ab121491)



ab121491, at 1/75 dilution, staining WSCD1 in paraffin-embedded Human colon tissue by Immunohistochemistry.

Immunohistochemistry (Formalin/PFA-fixed paraffin-embedded sections) - Anti-WSCD1 antibody (ab121491)



Western blot - Anti-WSCD1 antibody (ab121491)

**All lanes :** Anti-WSCD1 antibody (ab121491)  
at 1/250 dilution

**Lane 1 :** Negative control (vector only  
transfected HEK293T lysate)

**Lane 2 :** WSCD1-transfected HEK293T over-  
expression Lysate (Co-expressed with a C-  
terminal myc-DDK tag (~3.1 kDa))

Developed using the ECL technique.

**Please note:** All products are "FOR RESEARCH USE ONLY AND ARE NOT INTENDED FOR DIAGNOSTIC OR THERAPEUTIC USE"

### Our Abpromise to you: Quality guaranteed and expert technical support

- Replacement or refund for products not performing as stated on the datasheet
- Valid for 12 months from date of delivery
- Response to your inquiry within 24 hours
- We provide support in Chinese, English, French, German, Japanese and Spanish
- Extensive multi-media technical resources to help you
- We investigate all quality concerns to ensure our products perform to the highest standards

If the product does not perform as described on this datasheet, we will offer a refund or replacement. For full details of the Abpromise, please visit <http://www.abcam.cn/abpromise> or contact our technical team.

### Terms and conditions

- Guarantee only valid for products bought direct from Abcam or one of our authorized distributors