

Product datasheet

Anti-WDR27 antibody ab111525

1 图像

概述

产品名称	Anti-WDR27抗体
描述	兔多克隆抗体to WDR27
宿主	Rabbit
经测试应用	适用于: WB
种属反应性	与反应: Human
免疫原	Synthetic peptide conjugated to KLH, corresponding to a region within N terminal amino acids 235-264 of Human WDR27 (NP_872358.3).
阳性对照	MCF7 cell line lysates.

性能

形式	Liquid
存放说明	Shipped at 4°C. Store at 4°C (up to 6 months). Store at -20°C long term.
存储溶液	Preservative: 0.09% Sodium azide Constituent: PBS
纯度	Immunogen affinity purified
纯化说明	ab111525 is purified through a protein A column, followed by peptide affinity purification.
克隆	多克隆
同种型	IgG

应用

Our [Abpromise guarantee](#) covers the use of **ab111525** in the following tested applications.

The application notes include recommended starting dilutions; optimal dilutions/concentrations should be determined by the end user.

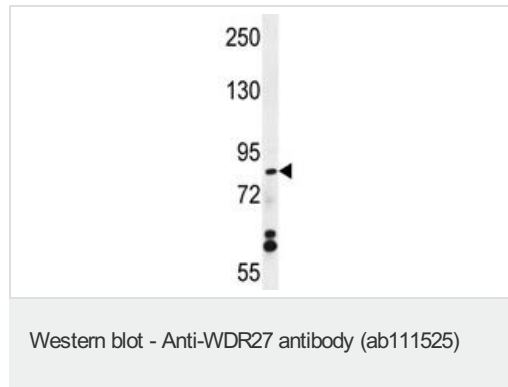
应用	Ab评论	说明
WB		1/100 - 1/500. Predicted molecular weight: 90 kDa.

图标

序列相似性

Contains 10 WD repeats.

图片



Anti-WDR27 antibody (ab111525) at 1/100 dilution + MCF7 cell line lysates at 35 µg

Predicted band size: 90 kDa

Please note: All products are "FOR RESEARCH USE ONLY AND ARE NOT INTENDED FOR DIAGNOSTIC OR THERAPEUTIC USE"

Our Abpromise to you: Quality guaranteed and expert technical support

- Replacement or refund for products not performing as stated on the datasheet
- Valid for 12 months from date of delivery
- Response to your inquiry within 24 hours
- We provide support in Chinese, English, French, German, Japanese and Spanish
- Extensive multi-media technical resources to help you
- We investigate all quality concerns to ensure our products perform to the highest standards

If the product does not perform as described on this datasheet, we will offer a refund or replacement. For full details of the Abpromise, please visit <http://www.abcam.cn/abpromise> or contact our technical team.

Terms and conditions

- Guarantee only valid for products bought direct from Abcam or one of our authorized distributors