

## Product datasheet

# Anti-WDR19 antibody ab105044

### 2 图像

#### 概述

产品名称	Anti-WDR19抗体
描述	兔多克隆抗体to WDR19
宿主	Rabbit
经测试应用	适用于: WB
种属反应性	与反应: Mouse, Human
免疫原	Recombinant fragment, corresponding to a region within amino acids 83 - 266 of Human WDR19 (AAH32578).
阳性对照	A549, HeLa, HepG2, HCT116 and Mouse brain lysates

#### 性能

形式	Liquid
存放说明	Shipped at 4°C. Upon delivery aliquot and store at -20°C. Avoid repeated freeze / thaw cycles.
存储溶液	Preservative: 0.01% Thimerosal (merthiolate) Constituents: 20% Glycerol, 0.1M Tris, 0.1M Glycine, pH 7.0
纯度	Immunogen affinity purified
克隆	多克隆
同种型	IgG

#### 应用

Our [Abpromise guarantee](#) covers the use of **ab105044** in the following tested applications.

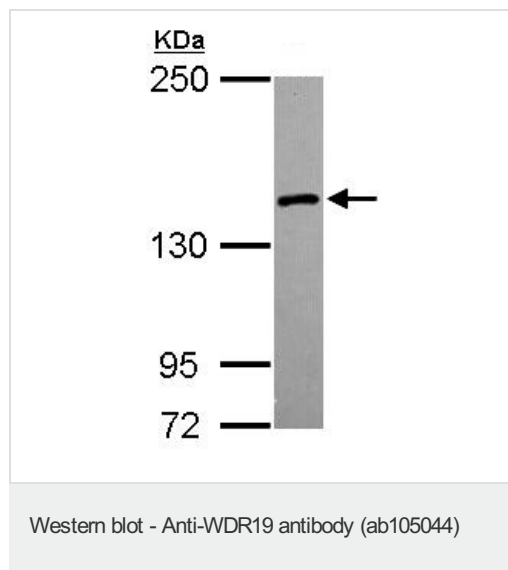
The application notes include recommended starting dilutions; optimal dilutions/concentrations should be determined by the end user.

应用	Ab评论	说明
WB		1/500 - 1/3000. Predicted molecular weight: 152 kDa.

#### 靶标

<b>功能</b>	Component of the IFT complex A (IFT-A), a complex required for retrograde ciliary transport (PubMed:20889716). Involved in cilia function and/or assembly (By similarity). Associates with the BBSome complex to mediate ciliary transport.
<b>组织特异性</b>	Some isoforms are tissue-specific. Highly expressed in the prostate. Lower expression in the cerebellum, pituitary gland, fetal lung, and pancreas. In normal prostate, expressed in both basal and luminal epithelial cells. No expression detected in fibromuscular stromal cells, endothelial cells, or infiltrating lymphocytes. Uniformed expression in prostate adenocarcinoma cells.
<b>疾病相关</b>	Cranioectodermal dysplasia 4 Short-rib thoracic dysplasia 5 with or without polydactyly Nephronophthisis 13 Senior-Loken syndrome 8
<b>序列相似性</b>	Contains 6 TPR repeats. Contains 6 WD repeats.
<b>发展阶段</b>	Expressed in fetal lung.
<b>细胞定位</b>	Cell projection, cilium. Cytoplasm, cytoskeleton, cilium basal body. Cell projection, cilium, photoreceptor outer segment. Localizes to photoreceptor connecting cilia, to the base of motile cilia in brain ependymal cells and to the base of and along primary cilia in kidney cells.

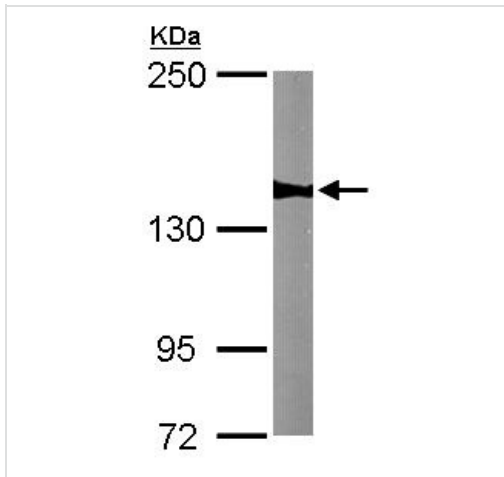
**图片**



Anti-WDR19 antibody (ab105044) at 1/1000 dilution + HeLa whole cell lysate at 30 µg

**Predicted band size:** 152 kDa

5% SDS PAGE



Anti-WDR19 antibody (ab105044) at 1/1000 dilution + Mouse brain whole cell lysate at 50  $\mu$ g

**Predicted band size:** 152 kDa

5% SDS PAGE

Western blot - Anti-WDR19 antibody (ab105044)

**Please note:** All products are "FOR RESEARCH USE ONLY AND ARE NOT INTENDED FOR DIAGNOSTIC OR THERAPEUTIC USE"

### Our Abpromise to you: Quality guaranteed and expert technical support

- Replacement or refund for products not performing as stated on the datasheet
- Valid for 12 months from date of delivery
- Response to your inquiry within 24 hours
- We provide support in Chinese, English, French, German, Japanese and Spanish
- Extensive multi-media technical resources to help you
- We investigate all quality concerns to ensure our products perform to the highest standards

If the product does not perform as described on this datasheet, we will offer a refund or replacement. For full details of the Abpromise, please visit <http://www.abcam.cn/abpromise> or contact our technical team.

### Terms and conditions

- Guarantee only valid for products bought direct from Abcam or one of our authorized distributors