

## Product datasheet

# Anti-Trophinin antibody [3-11] ab78117

### 1 图像

#### 概述

<b>产品名称</b>	Anti-Trophinin抗体[3-11]
<b>描述</b>	小鼠单克隆抗体[3-11] to Trophinin
<b>宿主</b>	Mouse
<b>特异性</b>	ab78117 recognizes trophinin, molecular weight 69kDa
<b>经测试应用</b>	<b>适用于:</b> WB, IP, IHC-P
<b>种属反应性</b>	<b>与反应:</b> Mouse, Human
<b>免疫原</b>	Synthetic peptide: SIVGFSGGP conjugated to KLH, corresponding to amino acids 1319-1327 of Human Trophinin <a href="#">Run BLAST with</a> <a href="#">Run BLAST with</a>
<b>阳性对照</b>	WB: RIPA lysates from HT-H cells IHC: Fallopian tube from an ectopic pregnancy

#### 性能

<b>形式</b>	Liquid
<b>存放说明</b>	Shipped at 4°C. Upon delivery aliquot and store at -20°C. Avoid repeated freeze / thaw cycles.
<b>存储溶液</b>	Preservative: 0.05% Sodium Azide Constituents: 30% Glycerol, Tissue culture supernatant
<b>纯度</b>	Tissue culture supernatant
<b>克隆</b>	单克隆
<b>克隆编号</b>	3-11
<b>同种型</b>	IgM

#### 应用

Our [Abpromise guarantee](#) covers the use of **ab78117** in the following tested applications.

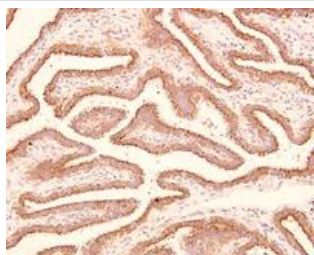
The application notes include recommended starting dilutions; optimal dilutions/concentrations should be determined by the end user.

应用	Ab评论	说明
WB		Use at an assay dependent concentration.
IP		Use at an assay dependent dilution.
IHC-P		Use at an assay dependent concentration.

## 靶标

**相关性** This gene encodes a membrane protein that mediates apical cell adhesion between trophoblastic cells and luminal epithelial cells of the endometrium and is implicated in the initial attachment during the process of embryo implantation. This gene is related to the MAGED gene family by sequence similarity and chromosome location. Multiple alternatively spliced transcript variants have been found for this gene; however, the full-length nature of some variants has not been defined. Trophinin is directly responsible for homophilic cell adhesion, and could be involved with bystin and tastin in a cell adhesion molecule complex that mediates an initial attachment of the blastocyst to uterine epithelial cells at the time of the embryo implantation.

## 图片



ab78117 staining of paraffin sections of the Fallopian tube from an ectopic pregnancy, using HRP-DAB detection and x200 magnification. Immuno-reactivity is seen as brown staining in the apical plasma membranes of tubal epithelia. The suggested dilution range is 1/100 - 1/500.

Immunohistochemistry (Formalin/PFA-fixed paraffin-embedded sections) - Trophinin antibody [3-11] (ab78117)

**Please note:** All products are "FOR RESEARCH USE ONLY AND ARE NOT INTENDED FOR DIAGNOSTIC OR THERAPEUTIC USE"

## Our Abpromise to you: Quality guaranteed and expert technical support

- Replacement or refund for products not performing as stated on the datasheet
- Valid for 12 months from date of delivery
- Response to your inquiry within 24 hours
- We provide support in Chinese, English, French, German, Japanese and Spanish
- Extensive multi-media technical resources to help you
- We investigate all quality concerns to ensure our products perform to the highest standards

If the product does not perform as described on this datasheet, we will offer a refund or replacement. For full details of the Abpromise,

please visit <http://www.abcam.cn/abpromise> or contact our technical team.

## **Terms and conditions**

---

- Guarantee only valid for products bought direct from Abcam or one of our authorized distributors