

Product datasheet

Anti-Tcl1 antibody [1-21] ab91211

1 图像

概述

产品名称	Anti-Tcl1抗体[1-21]
描述	小鼠单克隆抗体[1-21] to Tcl1
经测试应用	适用于: WB, IP, IHC-P, Flow Cyt
种属反应性	与反应: Human
免疫原	Synthetic peptide (Human)
阳性对照	Daudi cells

性能

形式	Liquid
存放说明	Shipped at 4°C. Store at +4°C short term (1-2 weeks). Store at -20°C or -80°C. Avoid freeze / thaw cycle.
存储溶液	Preservative: 0.09% Sodium Azide Constituents: PBS, pH 7.2
纯度	Protein A purified
克隆	单克隆
克隆编号	1-21
同种型	IgG2b
轻链类型	kappa

应用

Our [Abpromise guarantee](#) covers the use of **ab91211** in the following tested applications.

The application notes include recommended starting dilutions; optimal dilutions/concentrations should be determined by the end user.

应用	Ab评论	说明
WB		
IP		

应用	Ab评论	说明
----	------	----

IHC-P

Flow Cyt

**应用说明**

Flow Cyt: Use 0.5µg for 10<sup>6</sup> cells in 100µl volume.  
 IHC-P: Use at an assay dependent dilution.  
 IP: Use at an assay dependent dilution.  
 WB: Use at an assay dependent dilution. Predicted molecular weight: 13 kDa.

Not yet tested in other applications.  
 Optimal dilutions/concentrations should be determined by the end user.

**靶标**

**功能**

Enhances the phosphorylation and activation of AKT1, AKT2 and AKT3. Promotes nuclear translocation of AKT1. Enhances cell proliferation, stabilizes mitochondrial membrane potential and promotes cell survival.

**组织特异性**

Restricted in the T-cell lineage to immature thymocytes and activated peripheral lymphocytes. Preferentially expressed early in T- and B-lymphocyte differentiation.

**疾病相关**

Note=Chromosomal aberrations activating TCL1A are found in chronic T-cell leukemias (T-CLL). Translocation t(14;14)(q11;q32); translocation t(7;14)(q35;q32); inversion inv(14)(q11;q32) that involves the T-cell receptor alpha/delta loci.

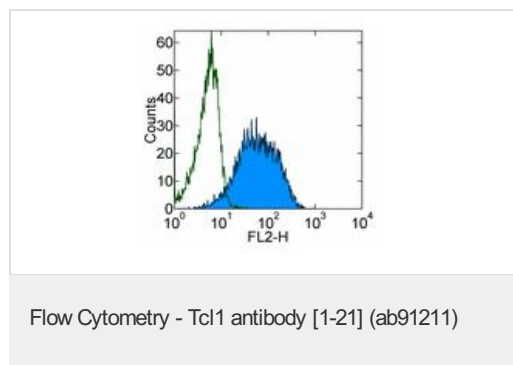
**序列相似性**

Belongs to the TCL1 family.

**细胞定位**

Cytoplasm. Nucleus. Microsome. Endoplasmic reticulum. Microsomal fraction.

**图片**



Staining of Daudi cells with ab91211 at 0.25 µg (blue histogram), or purified Mouse IgG2b, isotype control at 0.25 µg (green histogram), followed by treatment with Biotin anti-Mouse IgG and Phycoerythrin (PE) Streptavidin. Total viable cells were used for analysis.

**Please note:** All products are "FOR RESEARCH USE ONLY AND ARE NOT INTENDED FOR DIAGNOSTIC OR THERAPEUTIC USE"

**Our Abpromise to you: Quality guaranteed and expert technical support**

- Replacement or refund for products not performing as stated on the datasheet
- Valid for 12 months from date of delivery

- Response to your inquiry within 24 hours
- We provide support in Chinese, English, French, German, Japanese and Spanish
- Extensive multi-media technical resources to help you
- We investigate all quality concerns to ensure our products perform to the highest standards

If the product does not perform as described on this datasheet, we will offer a refund or replacement. For full details of the Abpromise, please visit <http://www.abcam.cn/abpromise> or contact our technical team.

#### **Terms and conditions**

---

- Guarantee only valid for products bought direct from Abcam or one of our authorized distributors