

## Product datasheet

# Anti-TTC37 antibody ab122421

1 References 2 图像

### 概述

产品名称	Anti-TTC37抗体
描述	兔多克隆抗体to TTC37
宿主	Rabbit
经测试应用	适用于: ICC/IF, IHC-P
种属反应性	与反应: Human
免疫原	antigen sequence: QLGLTYWFMG EETRKDKTKA LTHFLKAARL DTYMGKVFCY LGHYRDVVG DKNRARGCYR KAFELDDTDA ESGAAVDLS VELEDMEMAL AILTTVTQK, corresponding to amino acids 459-557 of Human TTC37. <a href="#">Run BLAST with ExPASy</a> <a href="#">Run BLAST with NCBI</a>
阳性对照	Human stomach tissue

### 性能

形式	Liquid
存放说明	Shipped at 4°C. Upon delivery aliquot and store at -20°C. Avoid freeze / thaw cycles.
存储溶液	pH: 7.20 Preservative: 0.02% Sodium azide Constituents: 59% PBS, 40% Glycerol
纯度	Immunogen affinity purified
克隆	多克隆
同种型	IgG

### 应用

Our [Abpromise guarantee](#) covers the use of **ab122421** in the following tested applications.

The application notes include recommended starting dilutions; optimal dilutions/concentrations should be determined by the end user.

应用	Ab评论	说明

应用	Ab评论	说明
ICC/IF		Use a concentration of 1 - 4 $\mu\text{g/ml}$ . Recommend PFA Fixation and Triton X-100 treatment
IHC-P		1/20 - 1/50. Perform heat mediated antigen retrieval with citrate buffer pH 6 before commencing with IHC staining protocol.

## 靶标

### 组织特异性

Widely expressed with the highest levels observed in vascular tissues, lymph node, pituitary, lung and intestine. Not expressed in the liver.

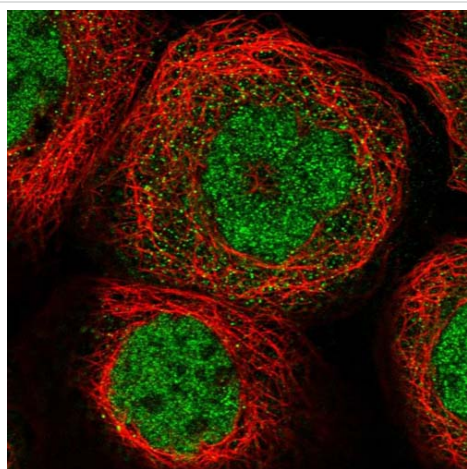
### 疾病相关

Note=Defects in TTC37 are associated with Trico-Hepato-Enteric syndrome (THE). THE syndrome is a rare and severe autosomal recessive condition that associates intractable diarrhea with facial dysmorphism, intrauterine growth retardation immunodeficiency with low serum concentrations of immunoglobulins and hair abnormalities characterized by woolly hair.

### 序列相似性

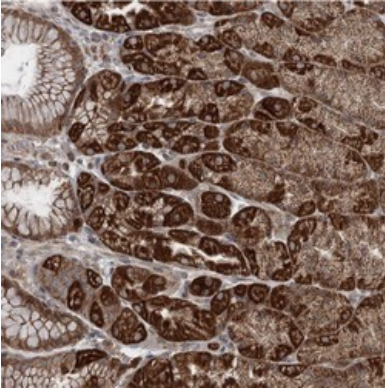
Contains 20 TPR repeats.

## 图片



Immunofluorescent staining of Human cell line A-431 shows positivity in nucleus but not nucleoli and cytoplasm. Recommended concentration of ab122421 1-4  $\mu\text{g/ml}$ . Cells treated with PFA/Triton X-100.

Immunocytochemistry/ Immunofluorescence - Anti-TTC37 antibody (ab122421)



ab122421 at 1/35 dilution staining TTC37 in Paraffin-embedded Human stomach tissue by Immunohistochemistry.

Immunohistochemistry (Formalin/PFA-fixed paraffin-embedded sections) - Anti-TTC37 antibody (ab122421)

**Please note:** All products are "FOR RESEARCH USE ONLY AND ARE NOT INTENDED FOR DIAGNOSTIC OR THERAPEUTIC USE"

### Our Abpromise to you: Quality guaranteed and expert technical support

- Replacement or refund for products not performing as stated on the datasheet
- Valid for 12 months from date of delivery
- Response to your inquiry within 24 hours
- We provide support in Chinese, English, French, German, Japanese and Spanish
- Extensive multi-media technical resources to help you
- We investigate all quality concerns to ensure our products perform to the highest standards

If the product does not perform as described on this datasheet, we will offer a refund or replacement. For full details of the Abpromise, please visit <http://www.abcam.cn/abpromise> or contact our technical team.

### Terms and conditions

- Guarantee only valid for products bought direct from Abcam or one of our authorized distributors