

## Product datasheet

# Anti-TRA-1-60 (R) antibody [TRA-1-60] ab16288

★★★★☆ 8 Abreviews 42 References 4 图像

### 概述

<b>产品名称</b>	Anti-TRA-1-60 (R)抗体[TRA-1-60]
<b>描述</b>	小鼠单克隆抗体[TRA-1-60] to TRA-1-60 (R)
<b>宿主</b>	Mouse
<b>经测试应用</b>	<b>适用于:</b> ICC/IF, Flow Cyt, WB, IP, ICC, RIA, IHC-Fr
<b>种属反应性</b>	<b>与反应:</b> Rabbit, Human
<b>免疫原</b>	Tissue, cells or virus corresponding to Human TRA-1-60 (R). Human embryonal carcinoma cell line 2102Ep cl.2A6.
<b>常规说明</b>	This antibody clone is manufactured by Abcam.  If you require this antibody in a particular buffer formulation or a particular conjugate for your experiments, please contact <a href="mailto:orders@abcam.com">orders@abcam.com</a> or you can find further information <a href="#">here</a> .

### 性能

<b>形式</b>	Liquid
<b>存放说明</b>	Shipped at 4°C. Store at +4°C short term (1-2 weeks). Upon delivery aliquot. Store at -20°C or -80°C. Avoid freeze / thaw cycle.
<b>存储溶液</b>	Preservative: 0.02% Sodium Azide Constituents: PBS, pH 7.4
<b>纯度</b>	Tissue culture supernatant
<b>纯化说明</b>	Tissue culture supernatant was cross flow concentrated and buffer exchanged to PBS
<b>克隆</b>	单克隆
<b>克隆编号</b>	TRA-1-60
<b>骨髓瘤</b>	P3x66Ag.8-Sp2/0
<b>同种型</b>	IgM

### 应用

Our [Abpromise guarantee](#) covers the use of **ab16288** in the following tested applications.

The application notes include recommended starting dilutions; optimal dilutions/concentrations should be determined by the end user.

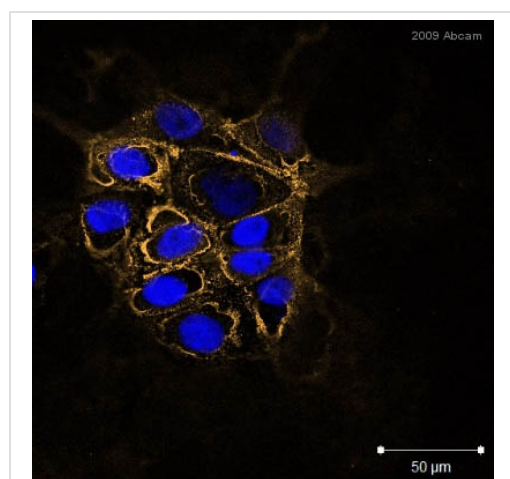
应用	Ab评论	说明
ICC/IF	★★★★★	Use at an assay dependent concentration. PubMed: 20674000
Flow Cyt	★★★★★	Use a concentration of 10 - 20 µg/ml. <a href="#">ab91545</a> - Mouse monoclonal IgM, is suitable for use as an isotype control with this antibody.
WB	★★★★★	Use a concentration of 1 - 10 µg/ml. Detects a band of approximately 250 kDa (predicted molecular weight: 235 kDa).
IP		Use at an assay dependent concentration.
ICC		Use at an assay dependent concentration.
RIA		Use at an assay dependent concentration.
IHC-Fr		Use at an assay dependent concentration.

## 靶标

**相关性** The monoclonal antibody TRA-1-60 is a marker of Human Embryonic Stem, Germ and Carcinoma Cells but Not Mouse Embryonic Stem, Germ or Carcinoma Cells. The core protein recognised by TRA-1-60 has not been identified but the antibody is thought to recognise carbohydrate epitopes associated with a high molecular weight proteoglycan.

**细胞定位** Cell Membrane

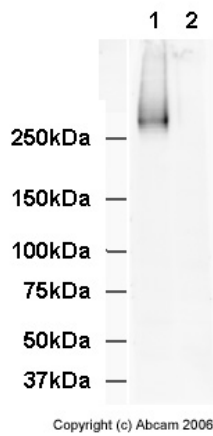
## 图片



ab16288 staining TRA-160 (R) in HUES7 cells by ICC/IF (Immunocytochemistry/immunofluorescence). Cells were fixed with paraformaldehyde, permeabilized with Triton and blocked in 10% serum for 1 hour at 24°C. Samples were incubated with primary antibody, dilution 1/500 (1% serum, 0.1% Triton in PBS), for 1 hour at 37°C. An Alexa Fluor<sup>®</sup> 647-conjugated goat polyclonal to mouse IgG, dilution 1/100, was used as secondary antibody.

Immunocytochemistry/ Immunofluorescence - Anti-TRA-1-60 (R) antibody [TRA-1-60] (ab16288)

This image is courtesy of an Abreview submitted by Ms Fiona Lewis



Western blot - Anti-TRA-1-60 (R) antibody [TRA-1-60] (ab16288)

**All lanes :** Anti-TRA-1-60 (R) antibody [TRA-1-60] (ab16288) at 10 µg/ml

**Lane 1 :** Human Embryonic Stem Cell Lysate

**Lane 2 :** Mouse Embryonic Stem Cell Lysate

Lysates/proteins at 20 µg per lane.

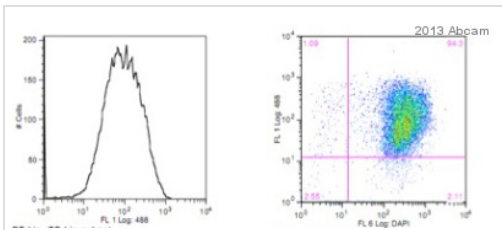
### Secondary

**All lanes :** Goat F(ab')<sub>2</sub> Anti-Mouse IgM mu chain (HRP) (ab5930) at 1/5000 dilution

**Predicted band size:** 235 kDa

**Observed band size:** 250 kDa

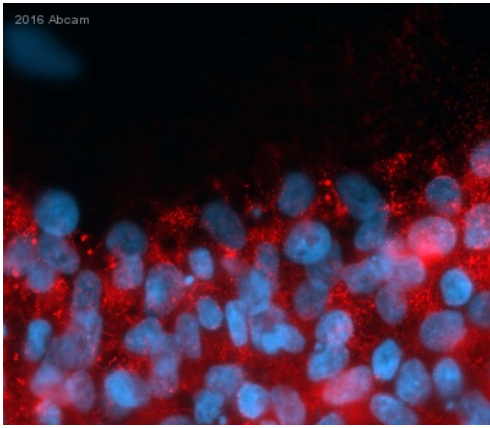
As expected, ab16288 recognizes a band in Human Embryonic Stem Cell Lysate but not Mouse Embryonic Stem Cell Lysate. The smear above the main band is due to protein glycosylation. The Western Blot profile is as expected for the TRA-1-60 monoclonal antibody.



Flow Cytometry - Anti-TRA-1-60 (R) antibody [TRA-1-60] (ab16288)

This image is courtesy of an anonymous Abreview

ab16288 staining TRA-1-60 (R) in Human H9 cells by Flow Cytometry. Cells were fixed with paraformaldehyde and permeabilized with 0.2% Triton X-100. Cells were incubated with the primary antibody (1/1000) for 1 hour at 4°C. Gating Strategy: Unstained H9 cells.



Immunocytochemistry/ Immunofluorescence analysis of human iPSC cells labeling TRA-1-60 (R) with ab16288 at 1/500 dilution. Cells were fixed with paraformaldehyde and permeabilized with 0.5% TX100. 5% serum was used to block cells for 20 minutes at 25°C. A polyclonal goat anti-mouse Cy3 secondary antibody was used at 1/500 dilution.

Immunocytochemistry/ Immunofluorescence - Anti-TRA-1-60 (R) antibody [TRA-1-60] (ab16288)

This image is courtesy of an abreview submitted by Madimir Milenkovic, University Hospital Regensburg, Germany

**Please note:** All products are "FOR RESEARCH USE ONLY AND ARE NOT INTENDED FOR DIAGNOSTIC OR THERAPEUTIC USE"

### Our Abpromise to you: Quality guaranteed and expert technical support

- Replacement or refund for products not performing as stated on the datasheet
- Valid for 12 months from date of delivery
- Response to your inquiry within 24 hours
- We provide support in Chinese, English, French, German, Japanese and Spanish
- Extensive multi-media technical resources to help you
- We investigate all quality concerns to ensure our products perform to the highest standards

If the product does not perform as described on this datasheet, we will offer a refund or replacement. For full details of the Abpromise, please visit <http://www.abcam.cn/abpromise> or contact our technical team.

### Terms and conditions

- Guarantee only valid for products bought direct from Abcam or one of our authorized distributors