

Product datasheet

Anti-TMUB1 antibody ab107842

2 图像

概述

| | |
|-------|----------------------------------------------------------------------------------------------------------------------------------------|
| 产品名称 | Anti-TMUB1抗体 |
| 描述 | 兔多克隆抗体to TMUB1 |
| 宿主 | Rabbit |
| 经测试应用 | 适用于: WB, IHC-P |
| 种属反应性 | 与反应: Mouse, Human |
| 免疫原 | Synthetic peptide conjugated to KLH, between amino acids 119-149 from the Central region of Human TMUB1 (NP_113622.1, NP_001129516.1). |
| 阳性对照 | Mouse spleen tissue lysate, Human lymph tissue |

性能

| | |
|------|---------------------------------------------------------------------------------------------|
| 形式 | Liquid |
| 存放说明 | Shipped at 4°C. Store at 4°C (up to 6 months). Store at -20°C long term. |
| 存储溶液 | Preservative: 0.09% Sodium Azide Constituents: PBS |
| 纯度 | Immunogen affinity purified |
| 纯化说明 | ab107842 is purified through a protein A column, followed by peptide affinity purification. |
| 克隆 | 多克隆 |
| 同种型 | IgG |

应用

Our [Abpromise guarantee](#) covers the use of **ab107842** in the following tested applications.

The application notes include recommended starting dilutions; optimal dilutions/concentrations should be determined by the end user.

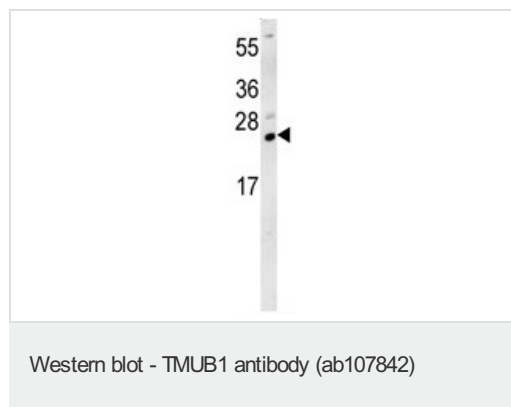
| 应用 | Ab评论 | 说明 |
|----|------|----------------------------------------------------|
| WB | | 1/100 - 1/500. Predicted molecular weight: 26 kDa. |

| 应用 | Ab评论 | 说明 |
|-------|------|------------------------------------------------------------------------------------------------------------------------------|
| IHC-P | | 1/50 - 1/100. Perform heat mediated antigen retrieval with citrate buffer pH 6 before commencing with IHC staining protocol. |

靶标

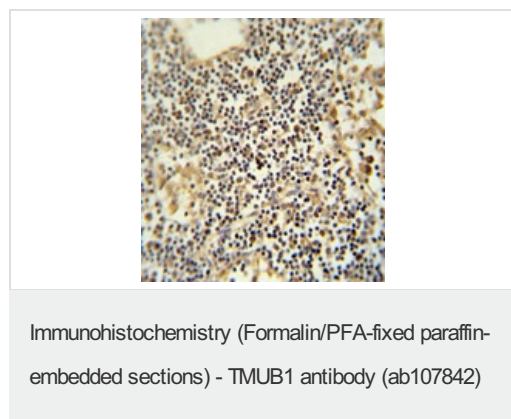
| | |
|-------|-------------------------------------------------------------------------------------------------------------------------------------------------|
| 功能 | May contribute to the regulation of translation during cell-cycle progression. May contribute to the regulation of cell proliferation. |
| 序列相似性 | Contains 1 ubiquitin-like domain. |
| 细胞定位 | Membrane. Cytoplasm. Nucleus. Predominantly nuclear during growth arrest (By similarity). Actively exported from the nucleus in dividing cells. |

图片



Anti-TMUB1 antibody (ab107842) at 1/100 dilution + Mouse spleen tissue lysate at 15 μ g

Predicted band size: 26 kDa



Immunohistochemistry analysis in formalin fixed and paraffin embedded Human lymph tissue followed by peroxidase conjugation of the secondary antibody and DAB staining. ab107842 at a dilution of 1/50.

Please note: All products are "FOR RESEARCH USE ONLY AND ARE NOT INTENDED FOR DIAGNOSTIC OR THERAPEUTIC USE"

Our Promise to you: Quality guaranteed and expert technical support

- Replacement or refund for products not performing as stated on the datasheet
- Valid for 12 months from date of delivery

- Response to your inquiry within 24 hours
- We provide support in Chinese, English, French, German, Japanese and Spanish
- Extensive multi-media technical resources to help you
- We investigate all quality concerns to ensure our products perform to the highest standards

If the product does not perform as described on this datasheet, we will offer a refund or replacement. For full details of the Abpromise, please visit <http://www.abcam.cn/abpromise> or contact our technical team.

Terms and conditions

- Guarantee only valid for products bought direct from Abcam or one of our authorized distributors